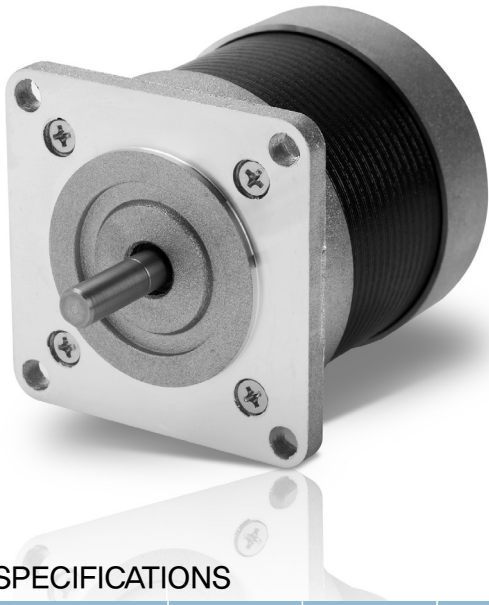


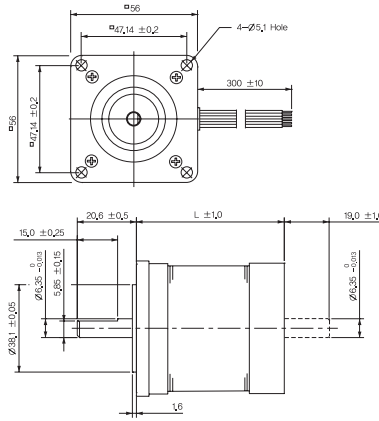
56R

series

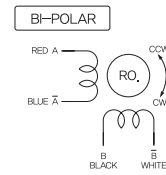
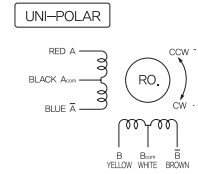
HYBRID STEPPING MOTOR



Dimension Specification



Wiring Diagram



SPECIFICATIONS

Model No. (Drive Sequence)	Step Angle (Deg.)	Rated Voltage (V/Phase)	Rated Current (A/Phase)	Winding Resistance (Ω /Phase)	Inductance (mH/Phase)	Holding Torque (N.m) (kgf · cm)	Rotor Inertia (g · cm ²)	Motor Length (L=mm)
4S56R-N12051S (UNI-POLAR)	1.8	12.0	0.6	20.0	30.0	0.5 (5.0)	120	51
4S56R-N02851S (UNI-POLAR)	1.8	2.8	2.0	1.4	2.0	0.5 (5.0)	120	51
4S56R-N12056S (UNI-POLAR)	1.8	12.0	0.6	20.0	38.0	0.6 (6.0)	155	56
4S56R-N06056S (UNI-POLAR)	1.8	6.0	1.2	5.0	9.8	0.6 (6.0)	155	56

OTHER SPECIFICATIONS AVAILABLE UPON REQUEST

