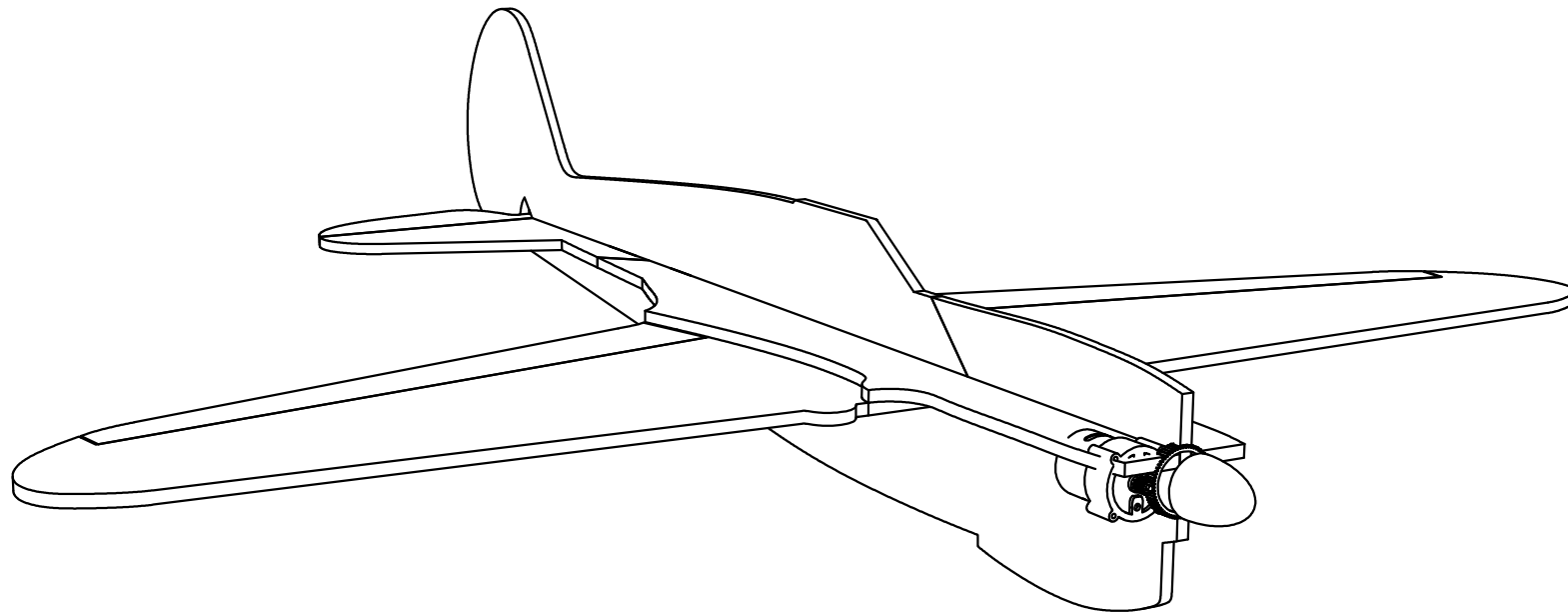
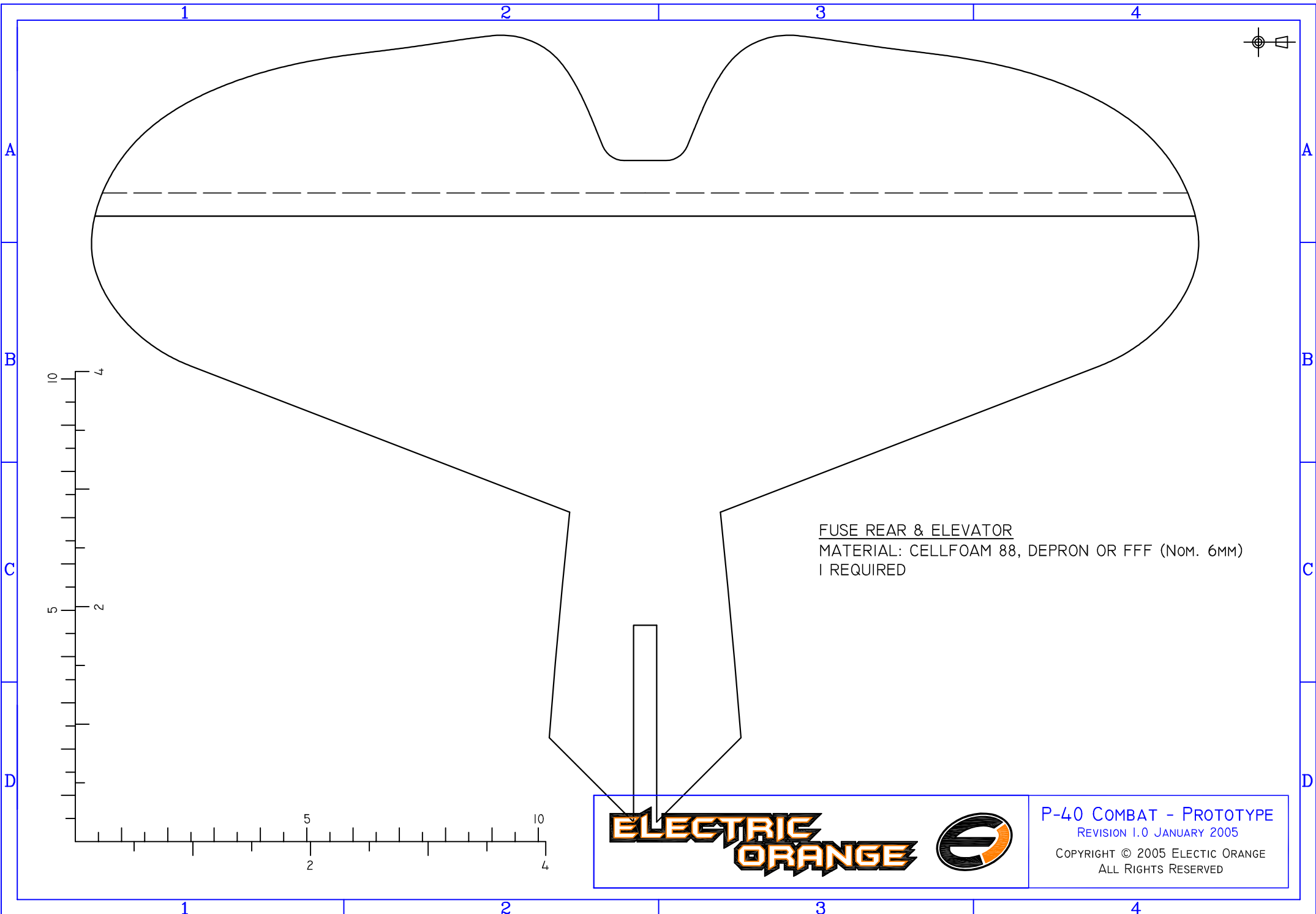


**ELECTRIC
ORANGE**



P-40 Warhawk Combat



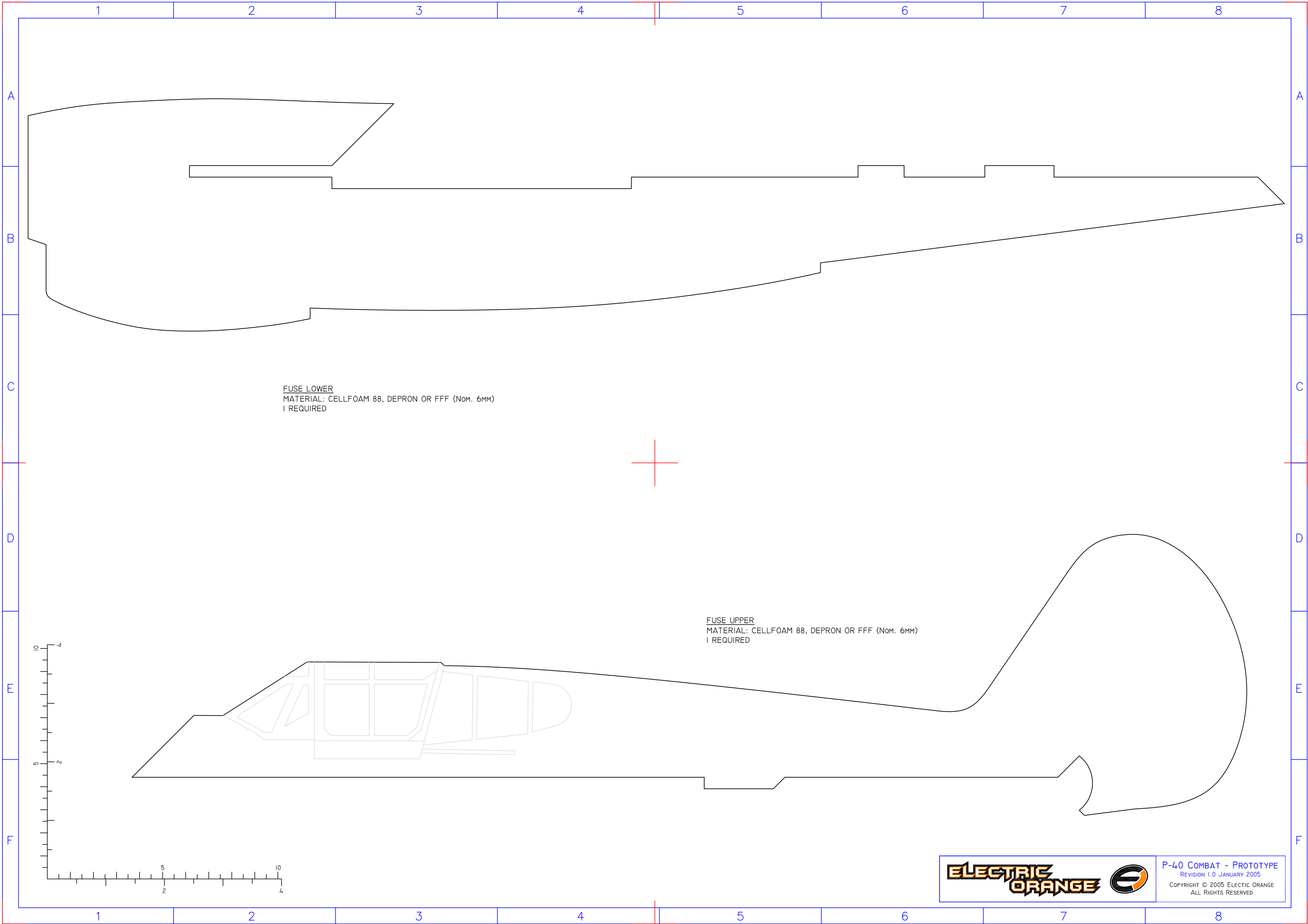


FUSE REAR & ELEVATOR
MATERIAL: CELLFOAM 88, DEPRON OR FFF (Nom. 6MM)
I REQUIRED

**ELECTRIC
ORANGE**

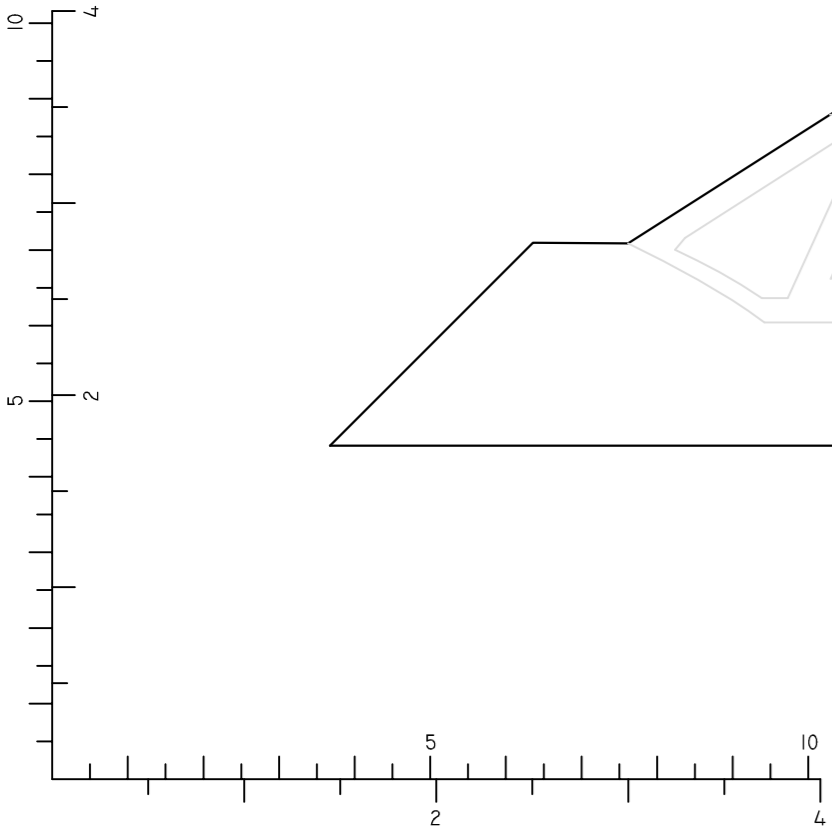


P-40 COMBAT - PROTOTYPE
REVISION 1.0 JANUARY 2005
COPYRIGHT © 2005 ELECTIC ORANGE
ALL RIGHTS RESERVED



FUSE LOWER
MATERIAL: CELLFOAM 88, DEPRON OR FFF (Nom. 6mm)
1 REQUIRED

FUSE UPPER
MATERIAL: CELLFOAM 88, DEPRON OR FFF (Nom. 6mm)
1 REQUIRED



P-40 COMBAT - PROTOTYPE
REVISION 1.0 JANUARY 2005
COPYRIGHT © 2005 ELECTRIC ORANGE
ALL RIGHTS RESERVED

1

2

3

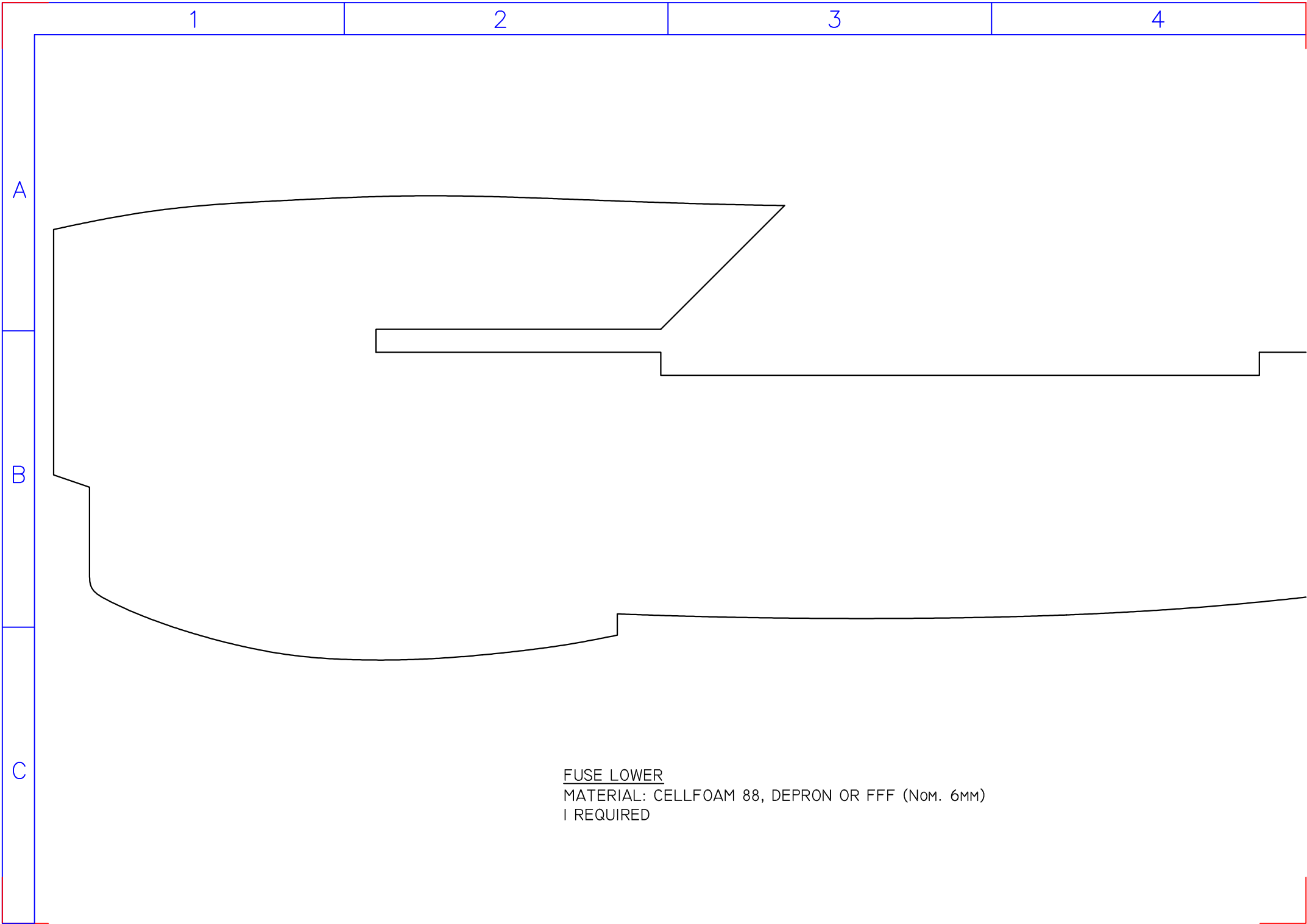
4

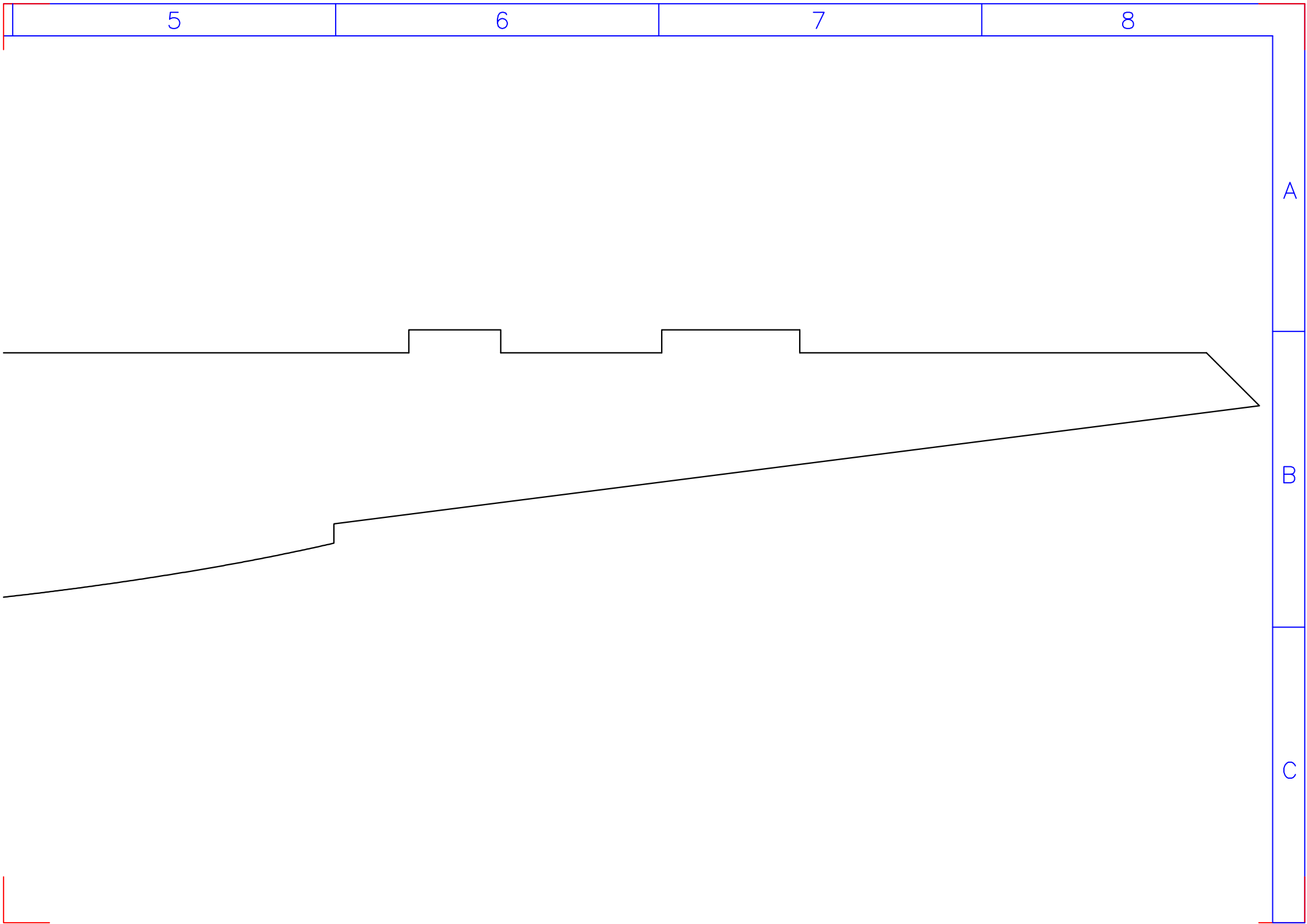
A

B

C

FUSE LOWER
MATERIAL: CELLFOAM 88, DEPRON OR FFF (Nom. 6MM)
I REQUIRED

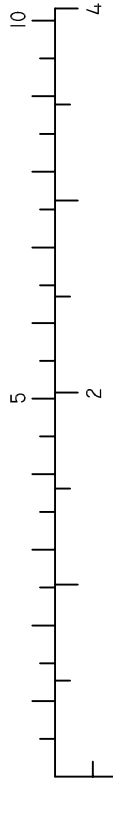




D

E

F

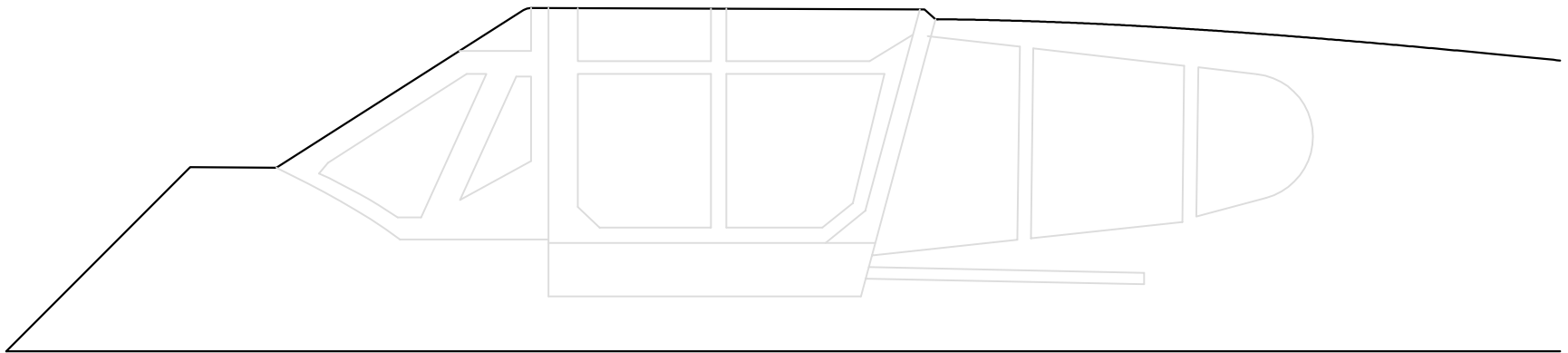


1

2

3

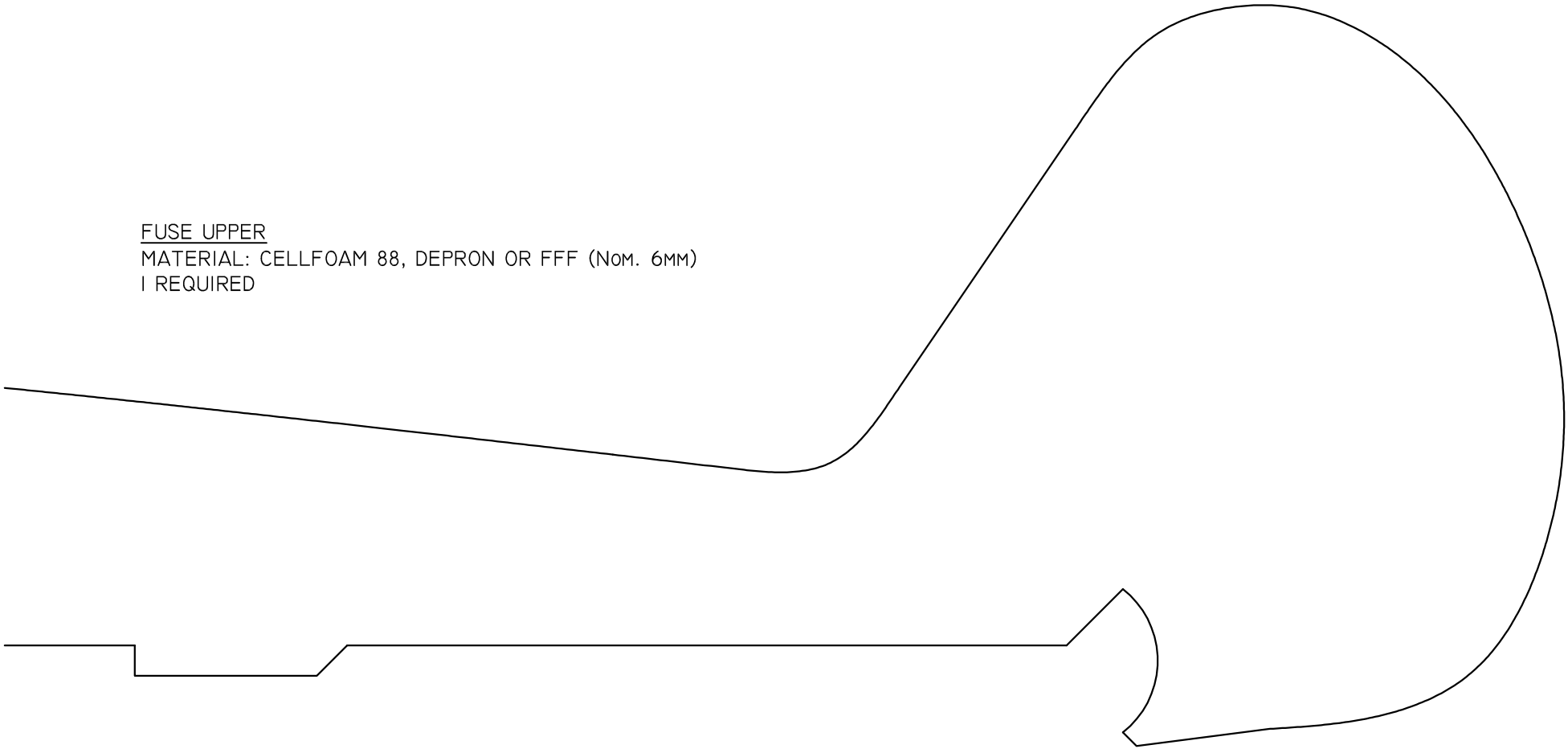
4



FUSE UPPER

MATERIAL: CELLFOAM 88, DEPRON OR FFF (Nom. 6MM)

1 REQUIRED



D

E

F

**ELECTRIC
ORANGE**



P-40 COMBAT - PROTOTYPE

REVISION 1.0 JANUARY 2005

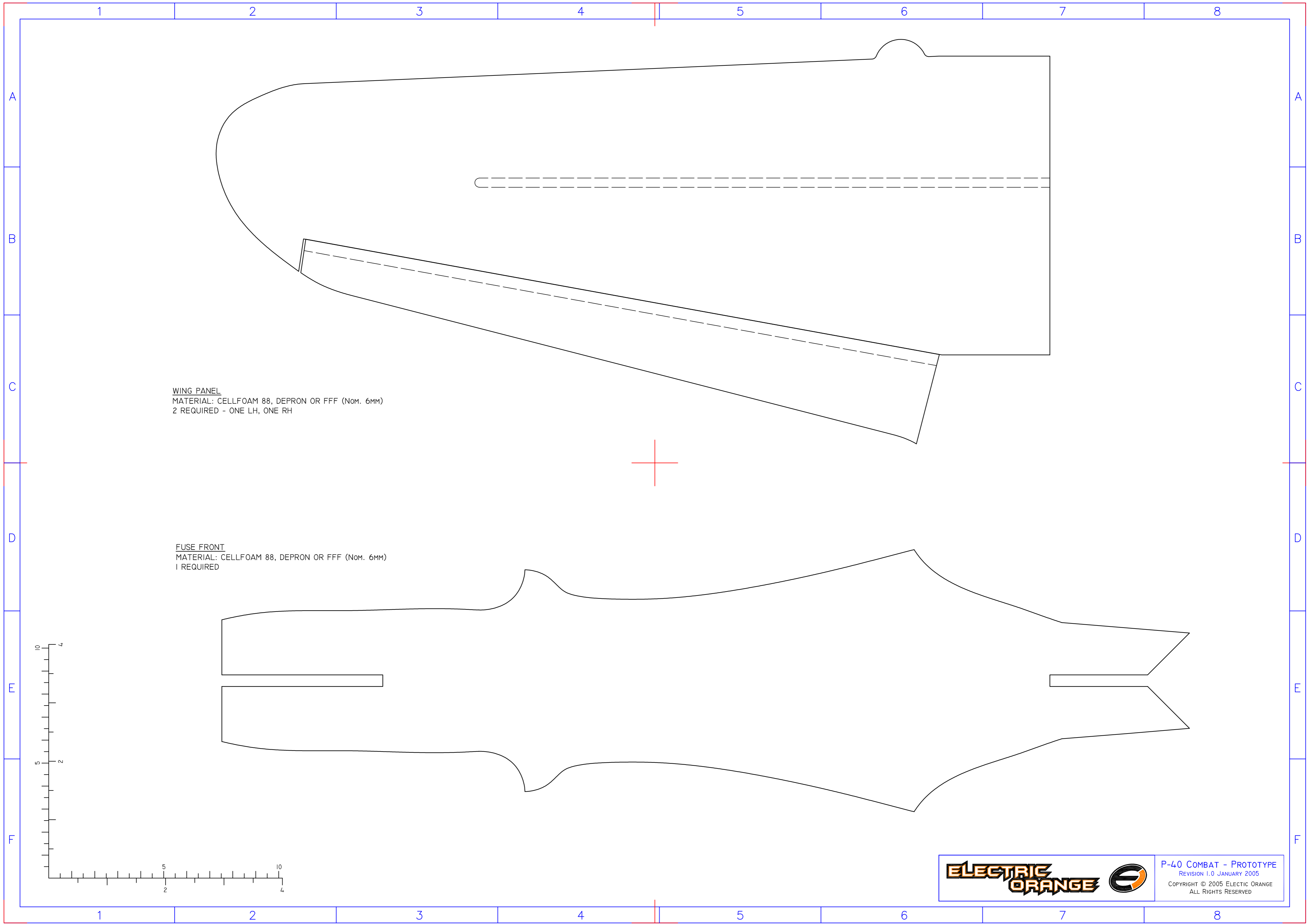
COPYRIGHT © 2005 ELECTIC ORANGE
ALL RIGHTS RESERVED

5

6

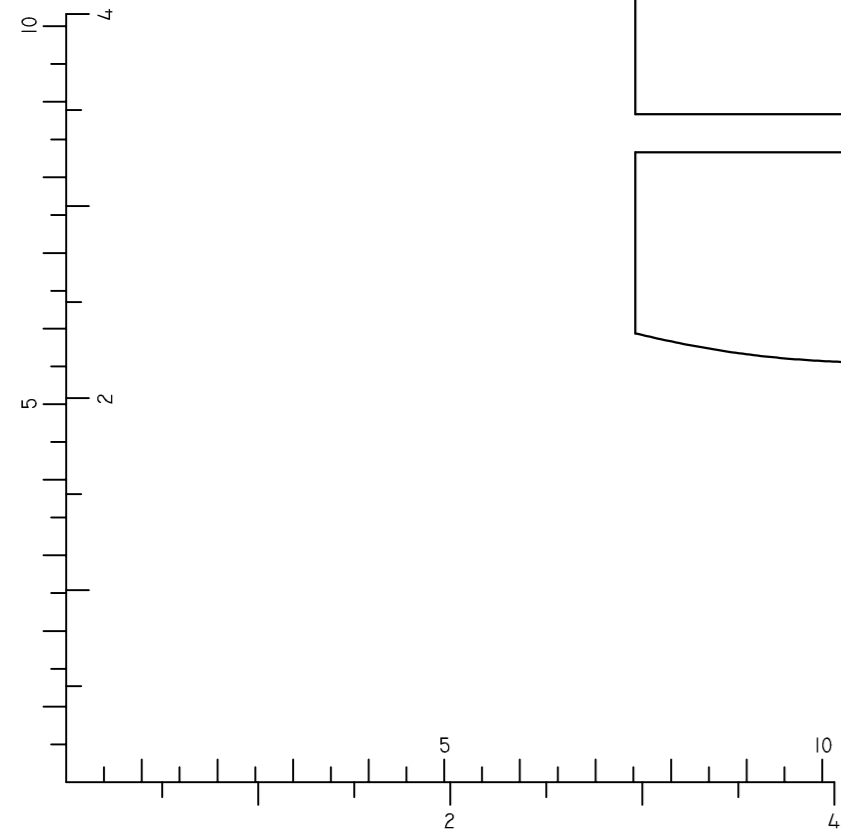
7

8



WING PANEL
MATERIAL: CELLFOAM 88, DEPRON OR FFF (Nom. 6MM)
2 REQUIRED - ONE LH, ONE RH

FUSE FRONT
MATERIAL: CELLFOAM 88, DEPRON OR FFF (Nom. 6MM)
1 REQUIRED



1

2

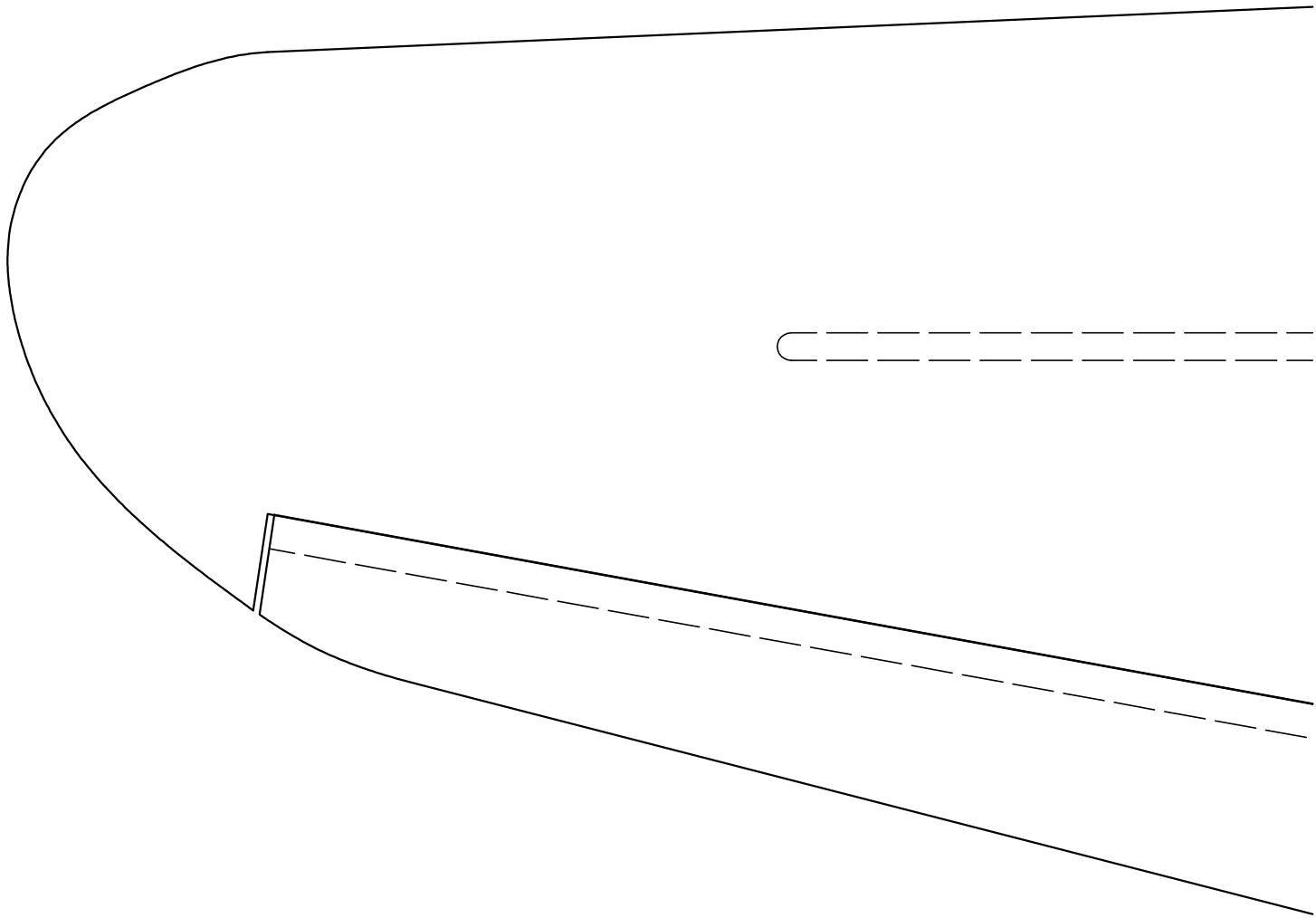
3

4

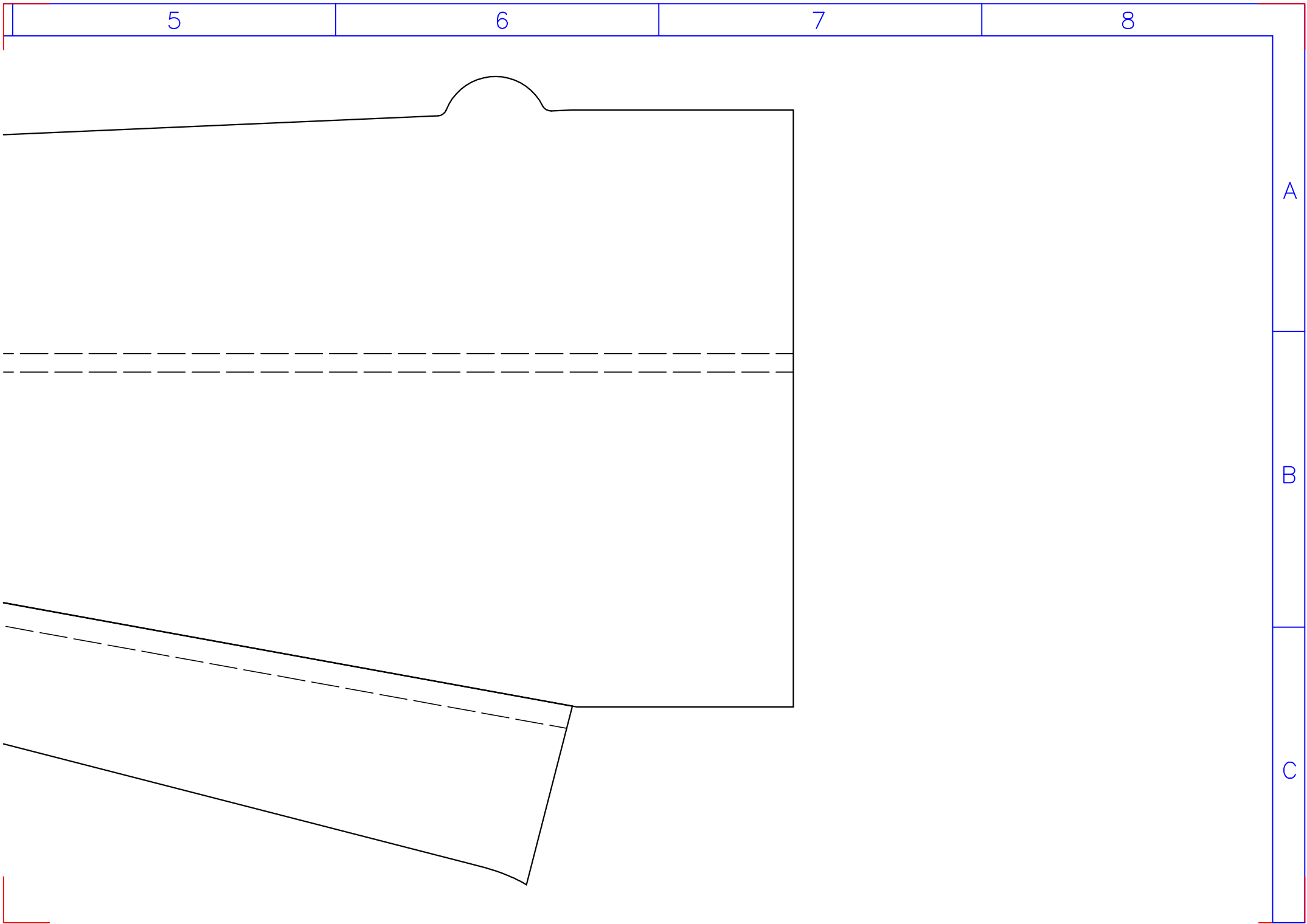
A

B

C



WING PANEL
MATERIAL: CELLFOAM 88, DEPRON OR FFF (Nom. 6mm)
2 REQUIRED - ONE LH, ONE RH

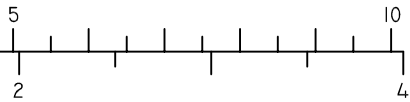
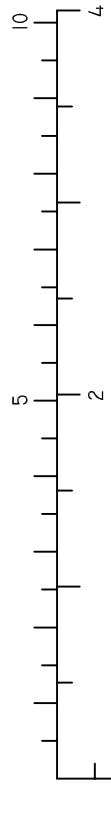


D

E

F

FUSE FRONT
MATERIAL: CELLFOAM 88, DEPRON OR FFF (Nom. 6MM)
1 REQUIRED

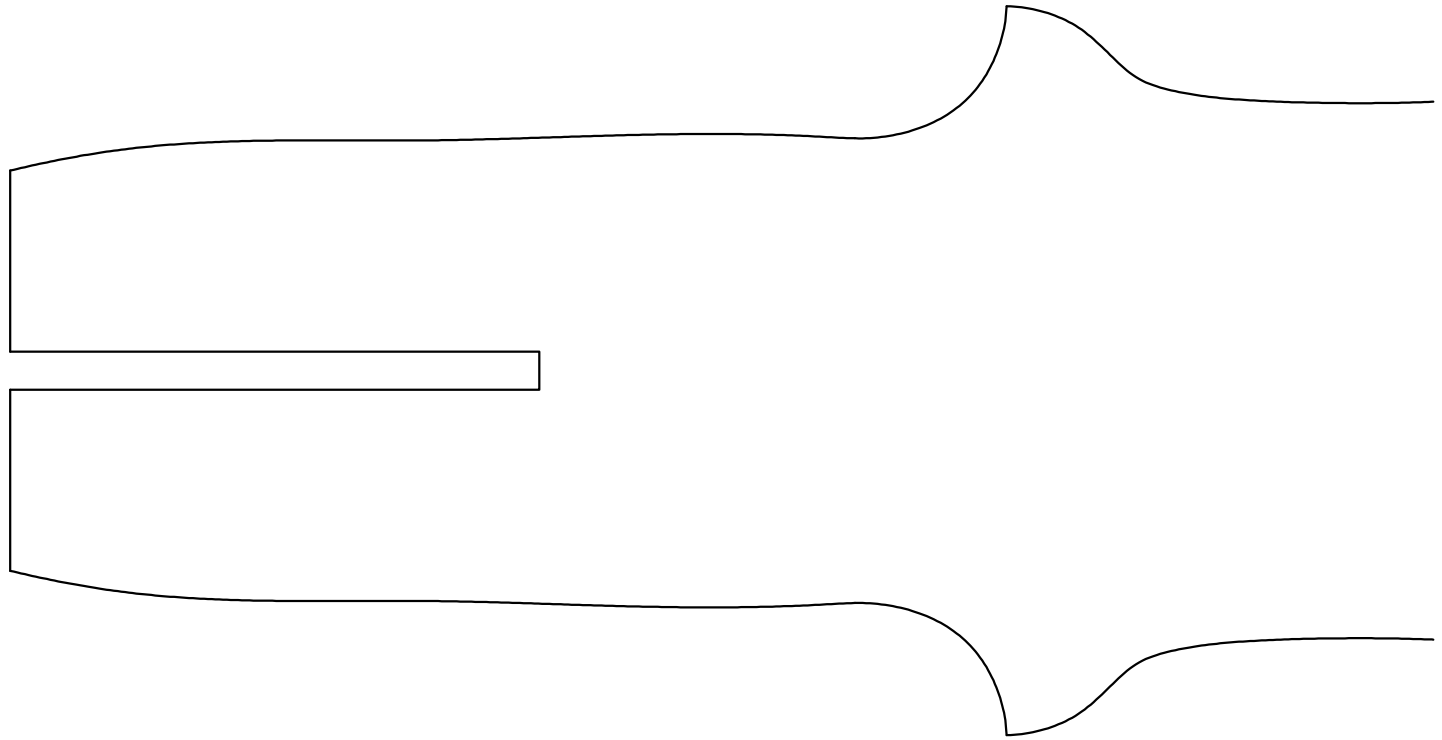


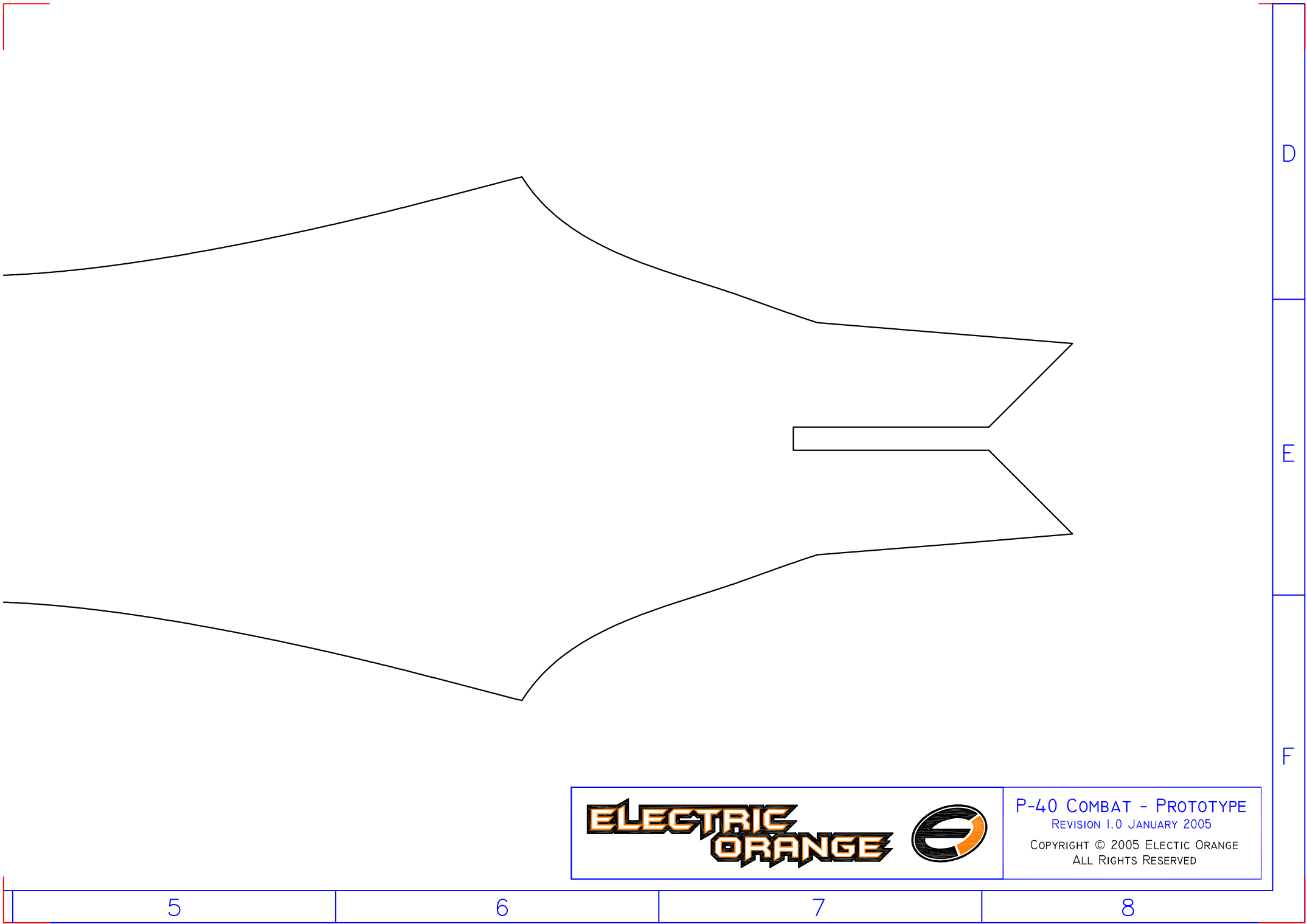
1

2

3

4





D

E

F

ELECTRIC ORANGE



P-40 COMBAT - PROTOTYPE
REVISION 1.0 JANUARY 2005
COPYRIGHT © 2005 ELECTIC ORANGE
ALL RIGHTS RESERVED

5

6

7

8