

Setting up the Simulator...

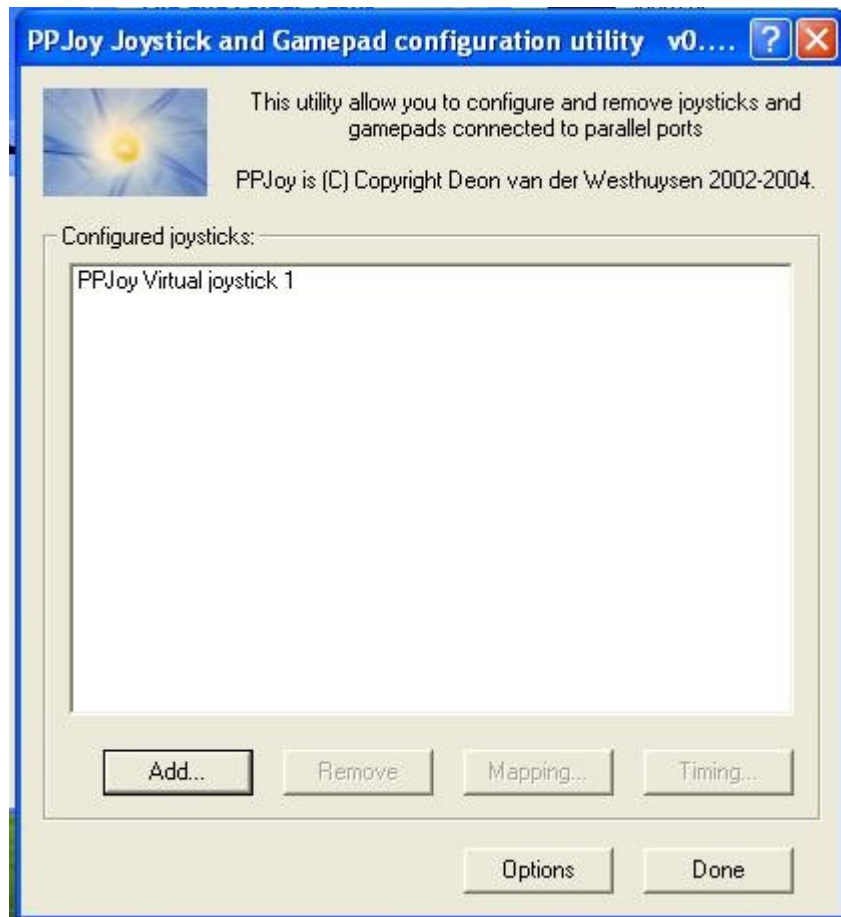
Step 1. Download PPJOY and FMS2.0 Alpha 8.5 (or an earlier if you like).

Step 2. Install BOTH.

Step 3. Run PPJOY's "CONFIGURE JOYSTICKS"

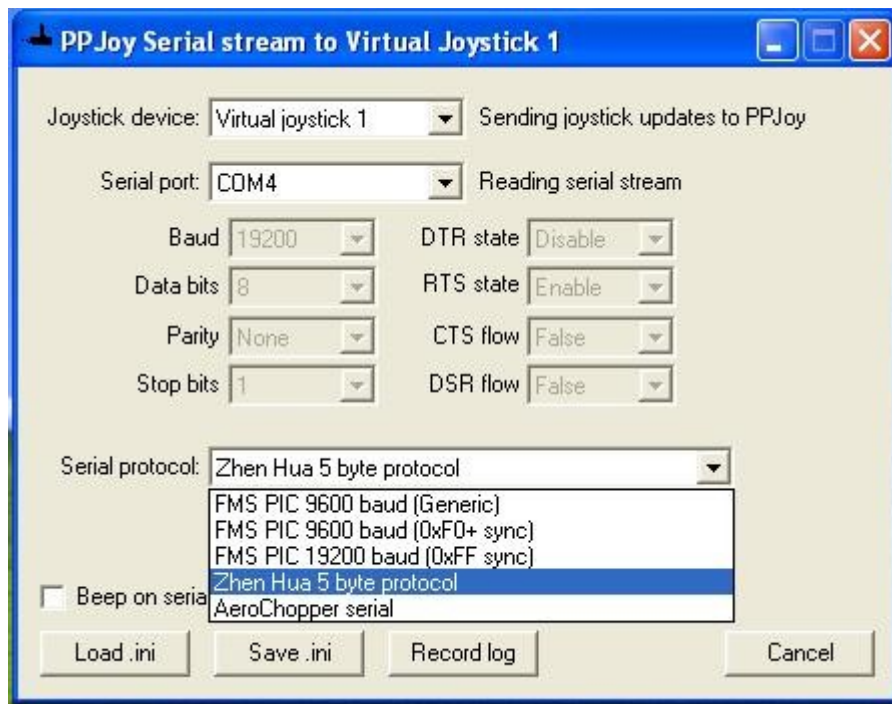
Step 4. Add a DEFAULT JOYSTICK. Click ADD then accept default.

During this process Windows will ask you to authorise installation a LOT. You need to let it.



When done, it looks like this.

Step 5. Run PPJOY SERIAL. You need to leave this running when you play the game... You can minimise it, but it **MUST BE RUNNING**.



These are the settings. Zhen Hua 5 byte protocol is the one you want.

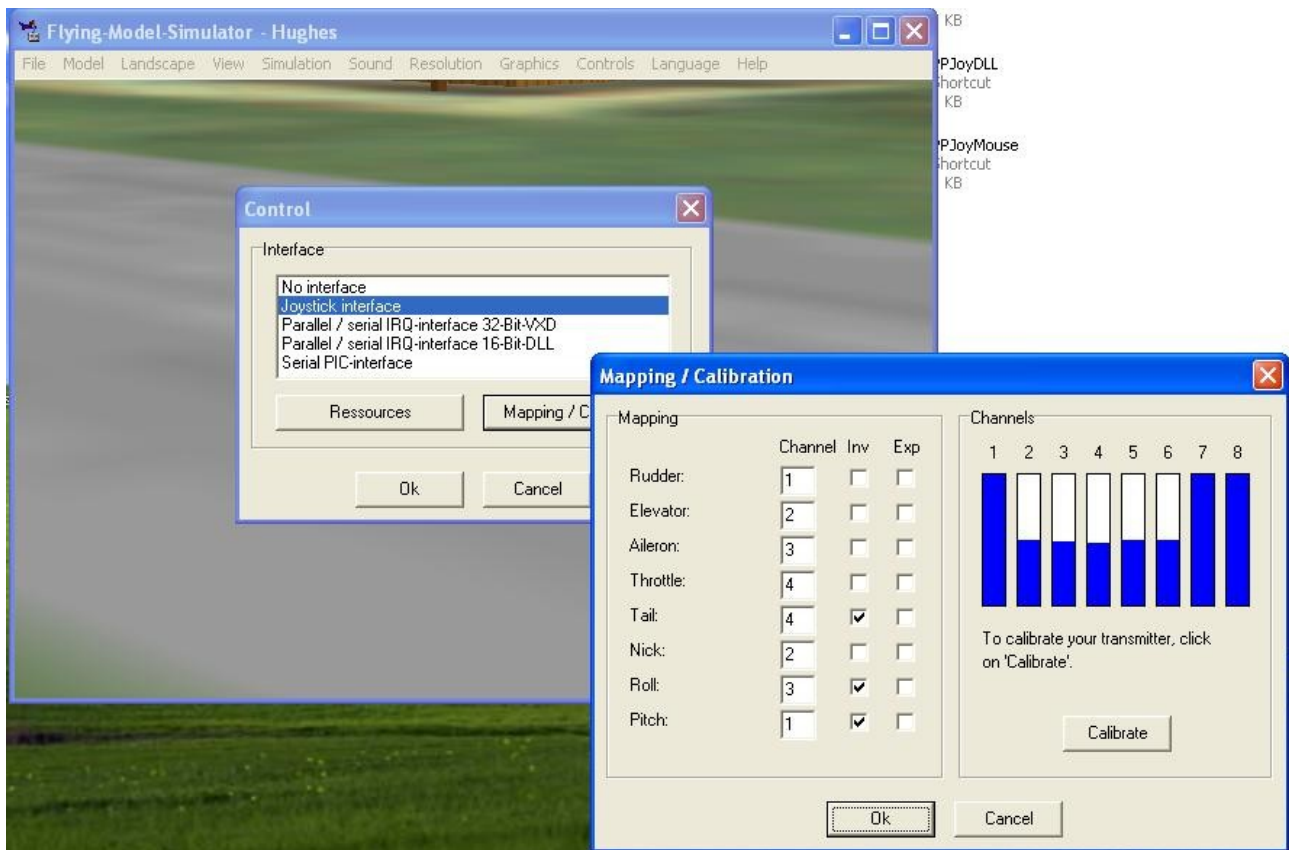
Step 6.

Run FMS. Select CONTROLS then MAPPING/CALIBRATE

Set up TAIL NICK ROLL and PITCH as below. (You can set up the top four if you want to use model airplanes as well, but I haven't set them up in the diagram below.. So you will have to move the sticks and figure it out. The BARS WILL MOVE with the sticks, so it's easy. INV reverses a channel. EXP is exponential. Don't use it for this heli, since the transmitter doesn't support it. It just deadens the stick.

CALIBRATE IT (move the sticks in all directions as far as they go.... )

Then you are done...

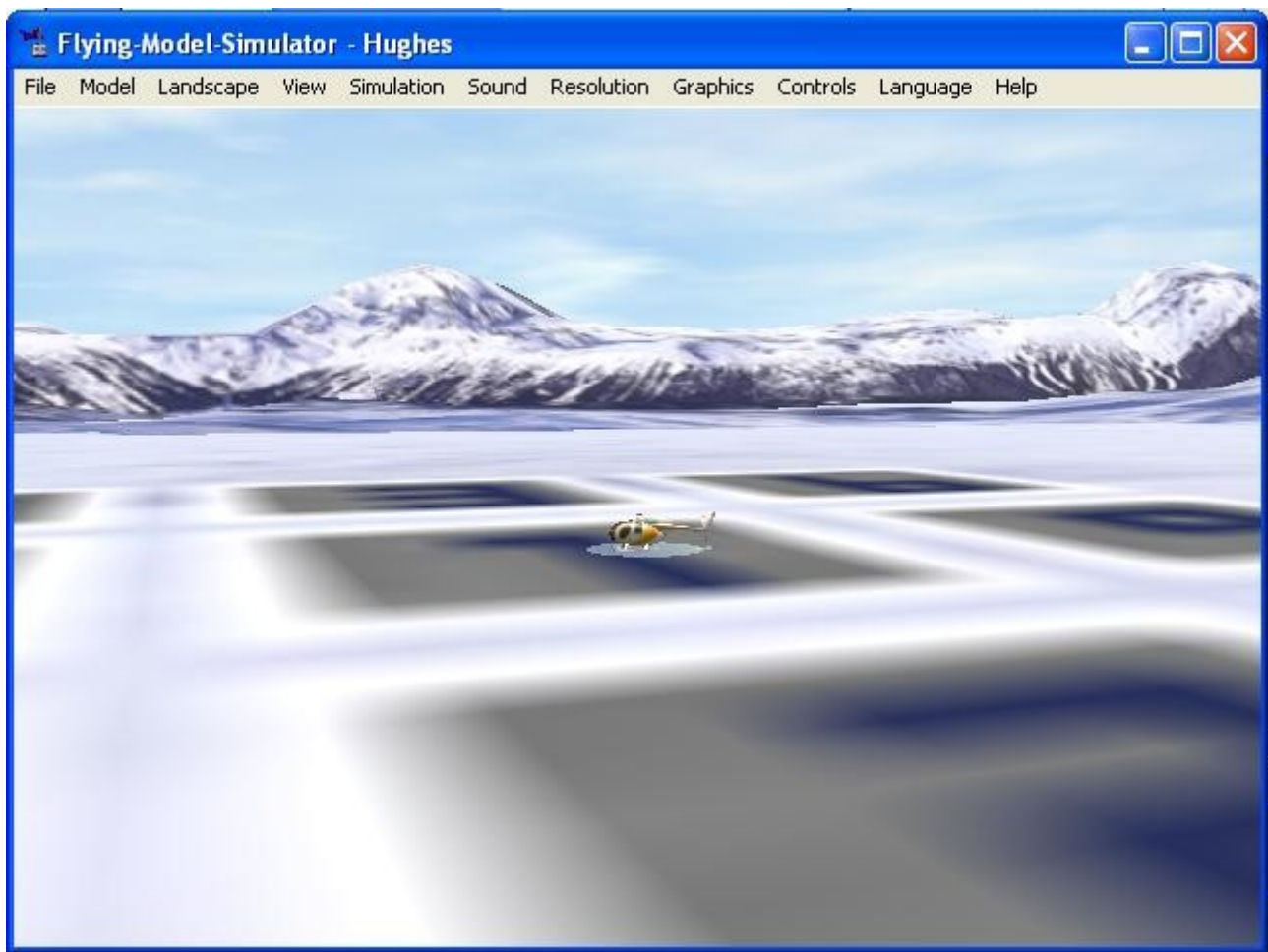


Step 7.

Select Winter Heli... (landscape, Winter Heli,) and HUGHES (Model, Hughes).

You may also want to use Auto-initialise (Simulation, Options, tick Auto Initialise after crash).

You will see this.



It may be zoomed in a little though... Use Number Pad – and + to adjust zoom to a comfortable level.

Now take off on 1. (Add throttle). Fly to 2. Land. Take off from 2. Fly to 3 land, and so on. The numbers are jumbled, but you will figure it out. You may need to play with the controls a little to get the hang of it.

You will crash a lot. That's normal. Just start again.

When you can fly the numbers, you are ready to fly your model helicopter.

ADVANCED:

Select Wind (Simulation, Wind Options).

When you can fly with 3ms wind and 3ms gusts, and fly the numbers UP and DOWN, then you are ready to fly indoors.

Also, practice hovering with the tail in (towards you) at first, but also learn to hover side-on and nose-in. Practice these a LOT.

Other notes:

If you take the crystal out of the transmitter when practicing, your transmitter will not transmitter. This saves batteries, and also avoids interfering with the channel un-necessarily.