

CURTISS RC32

1925 SCHNEIDER CONTEST VIII

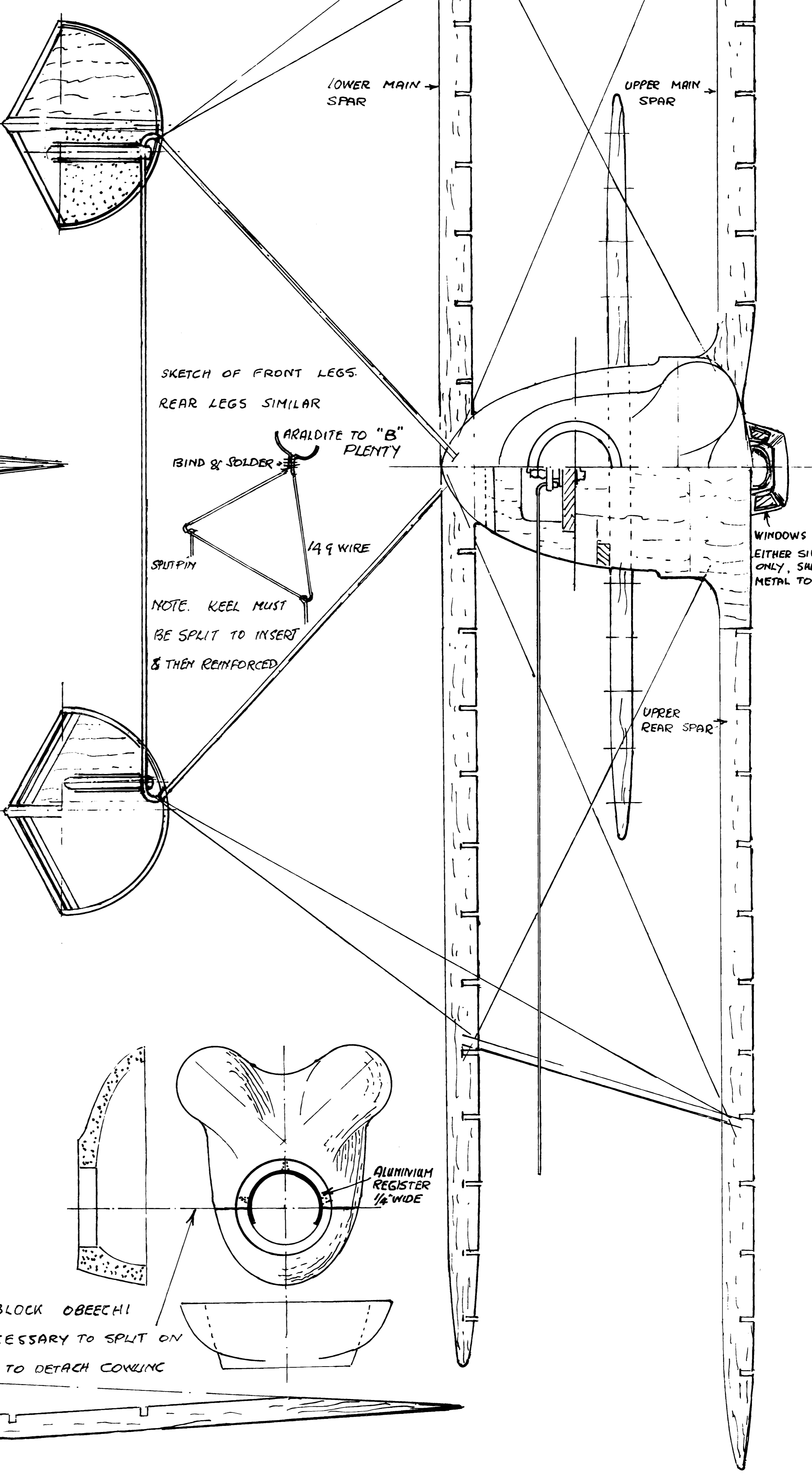
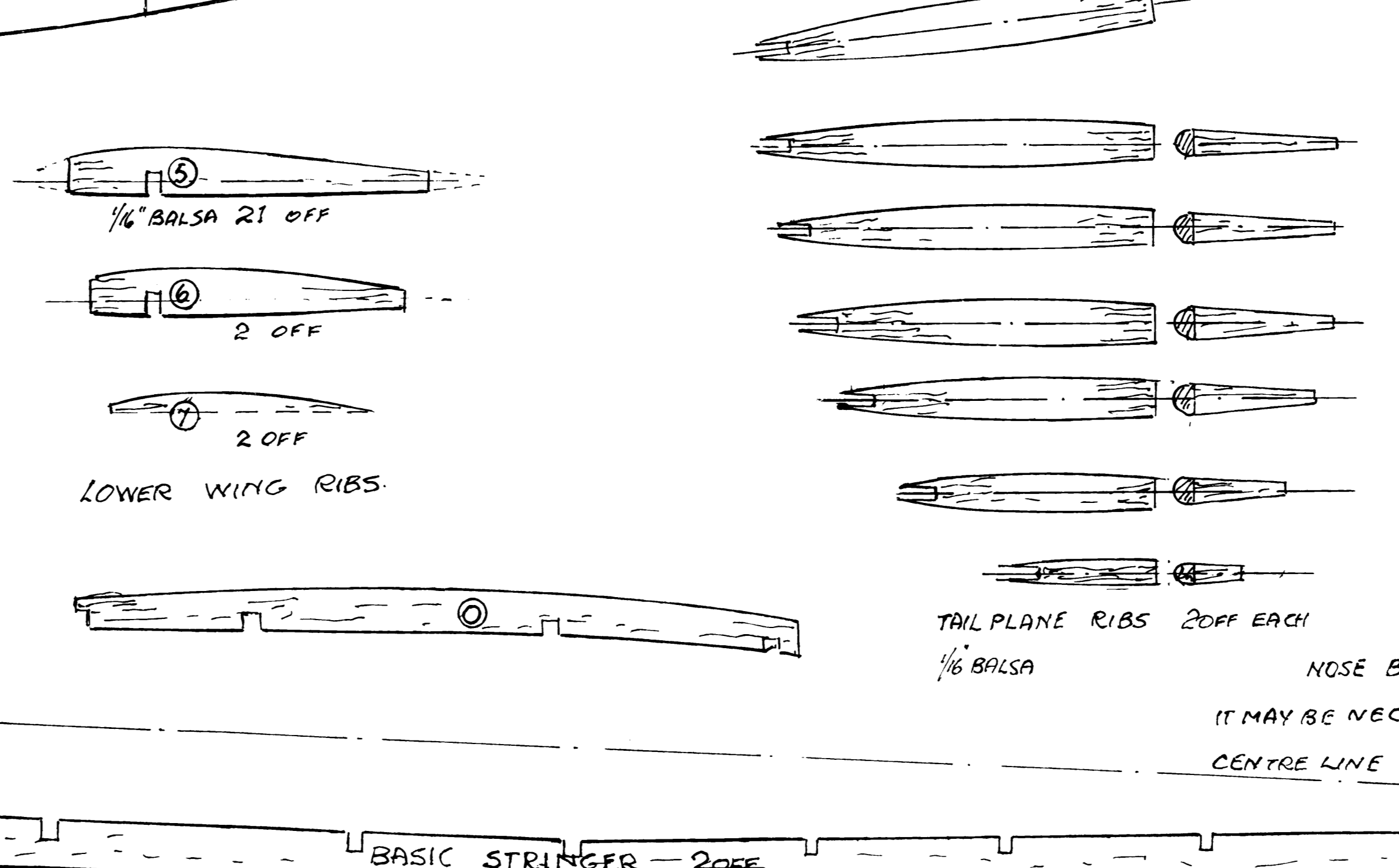
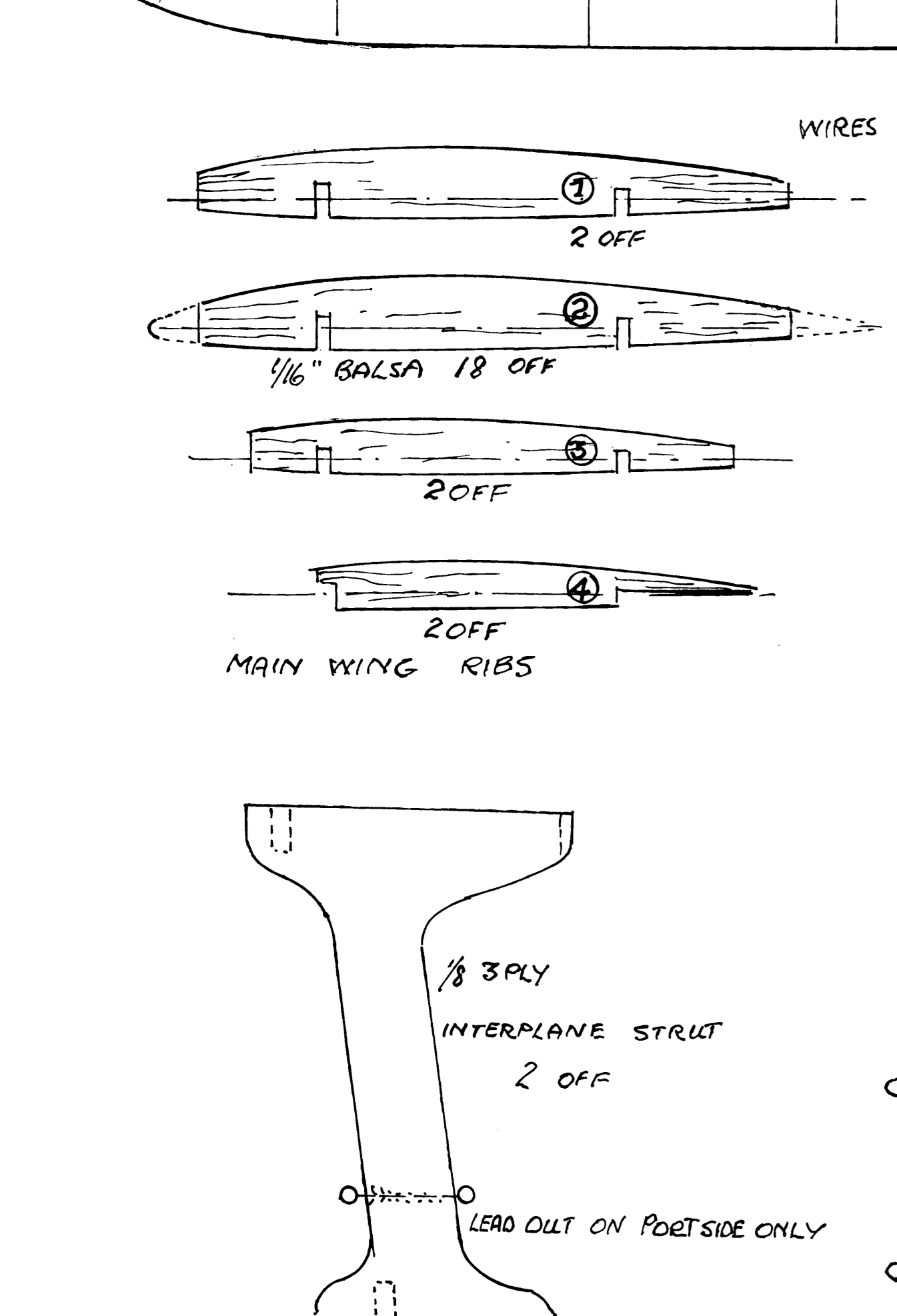
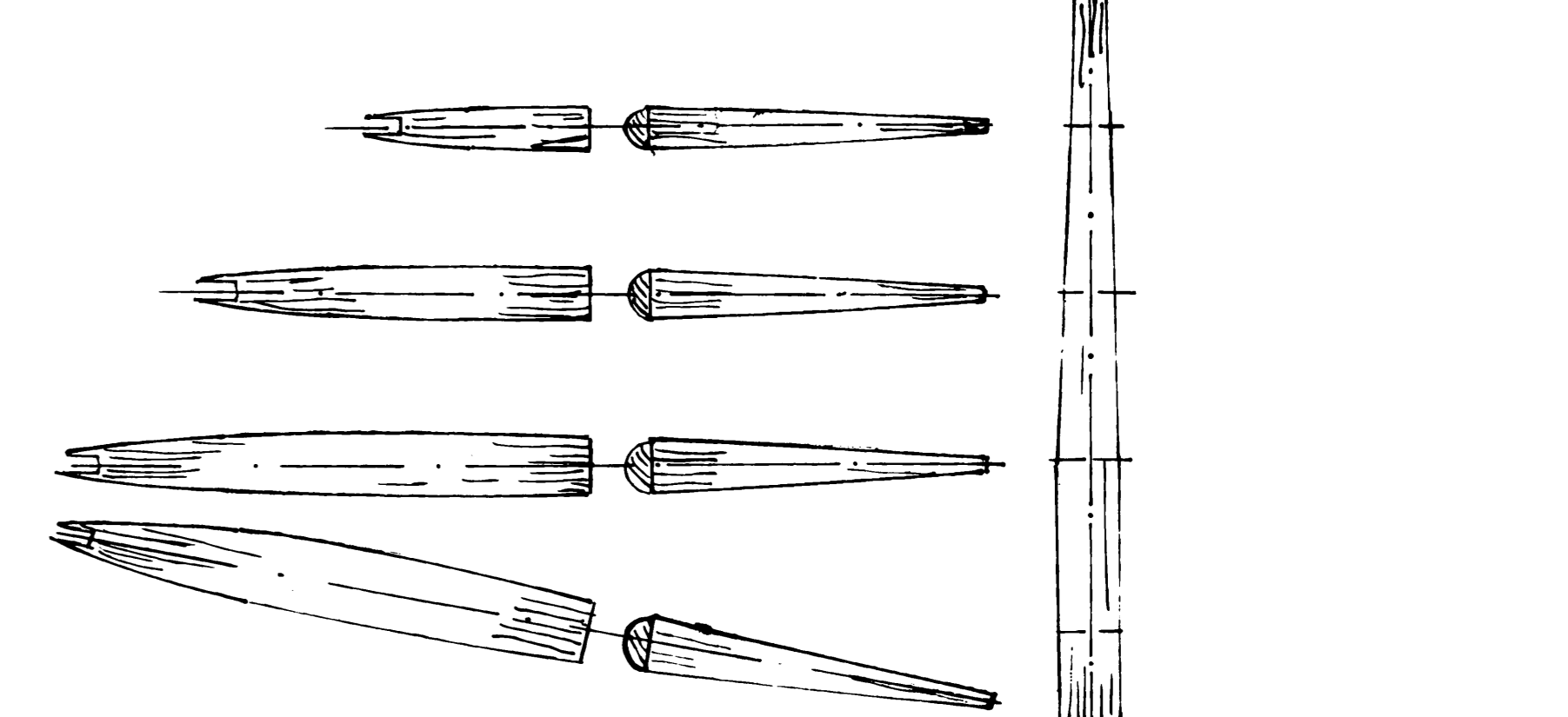
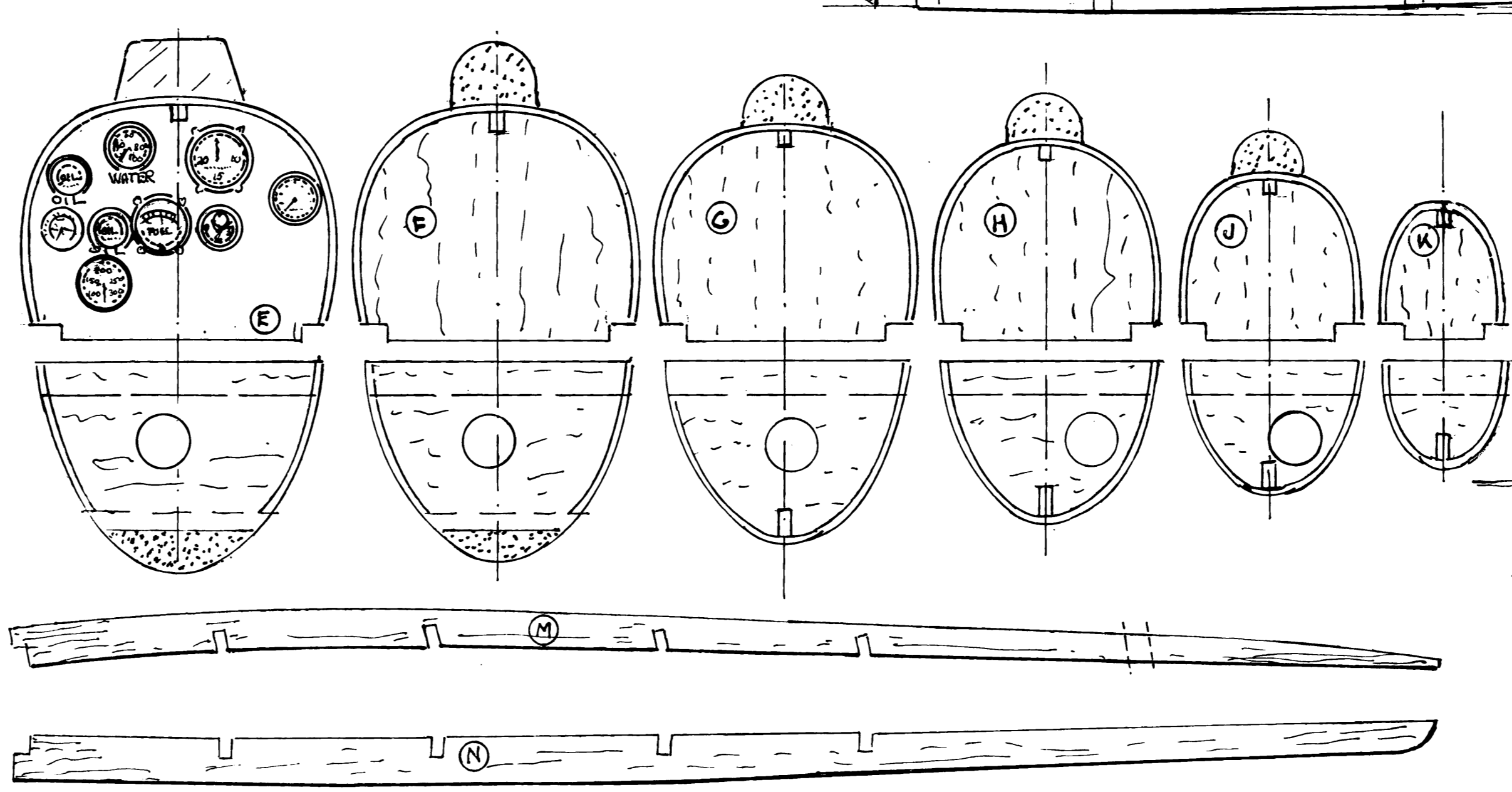
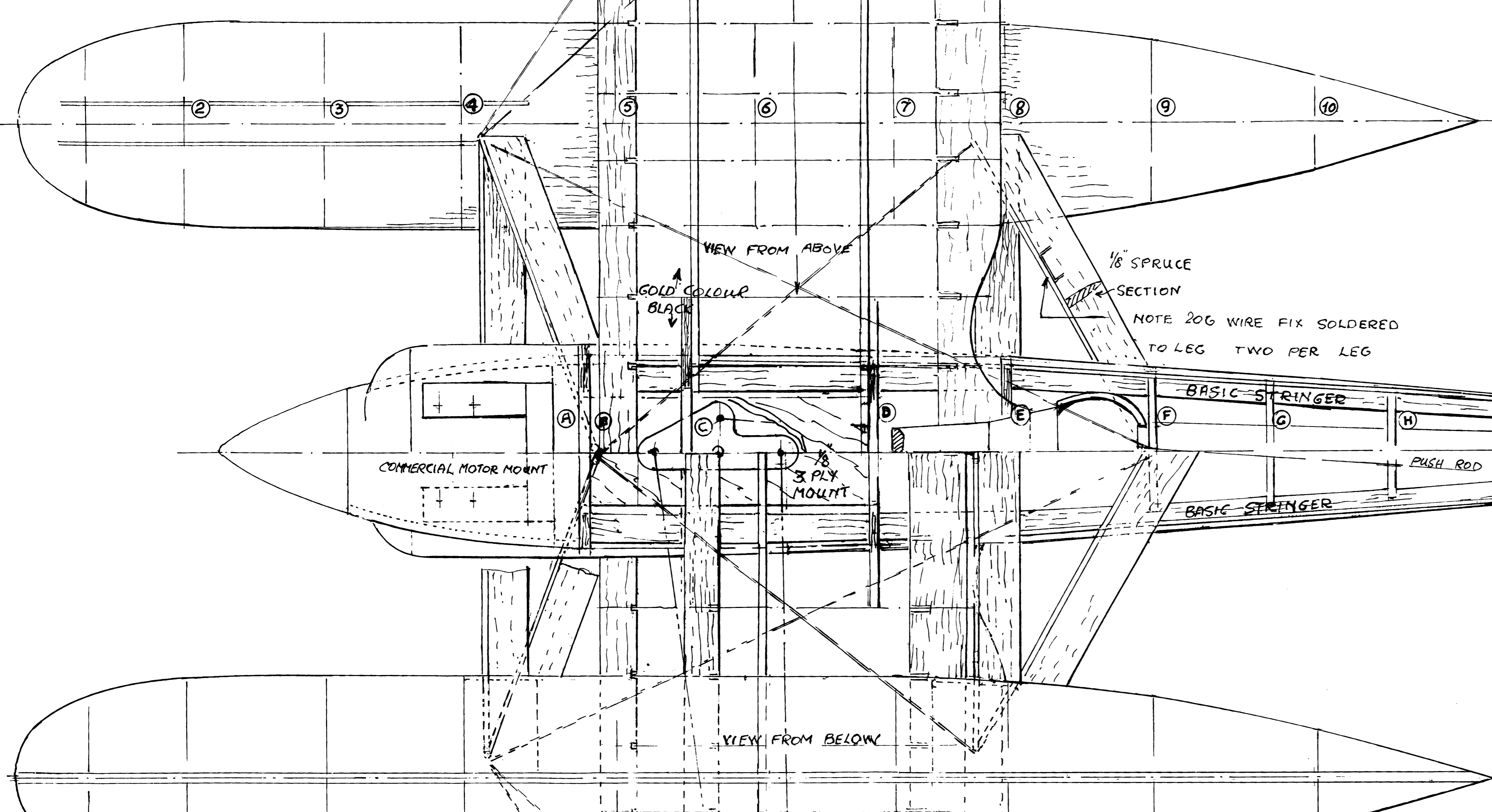
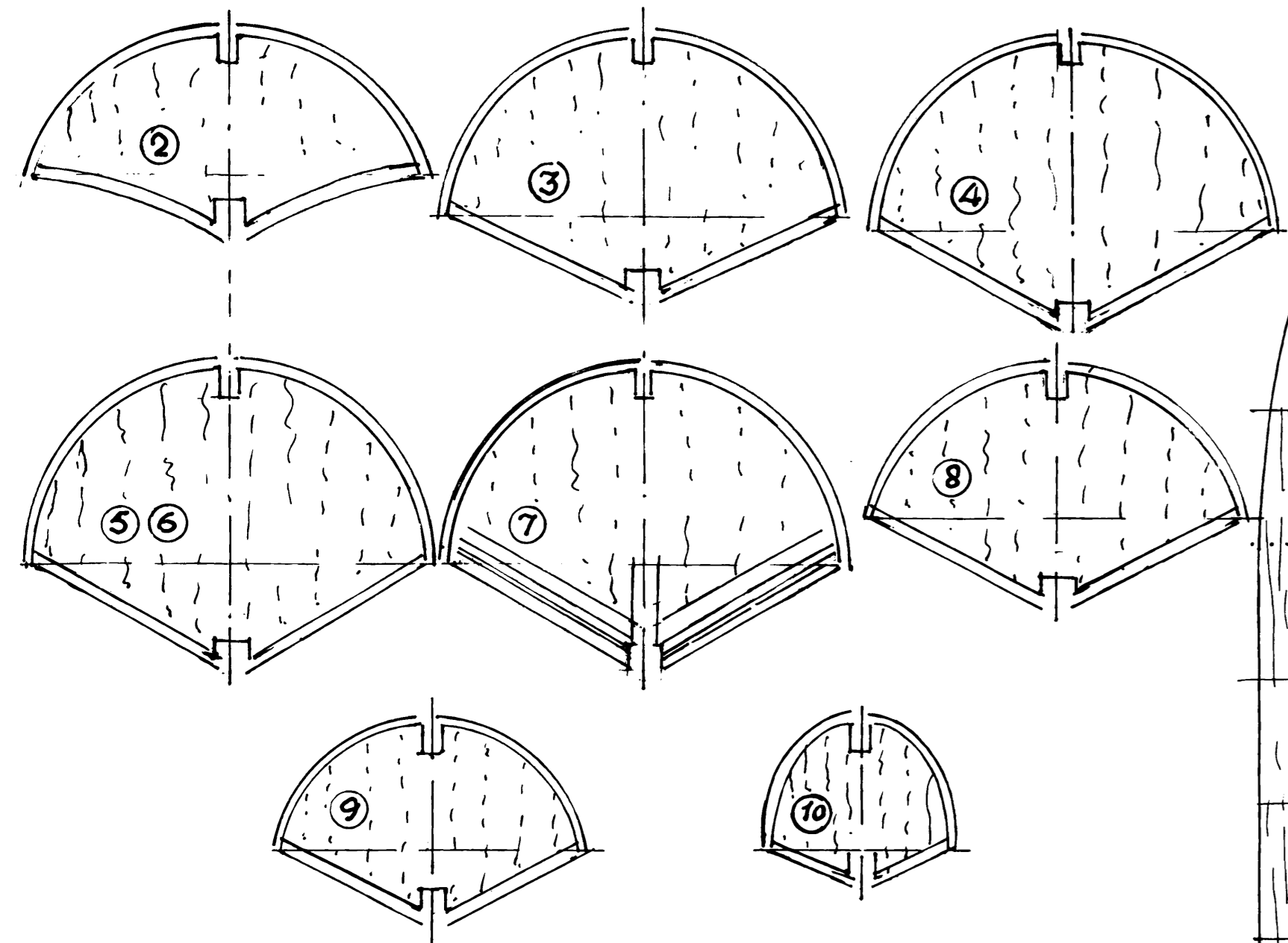
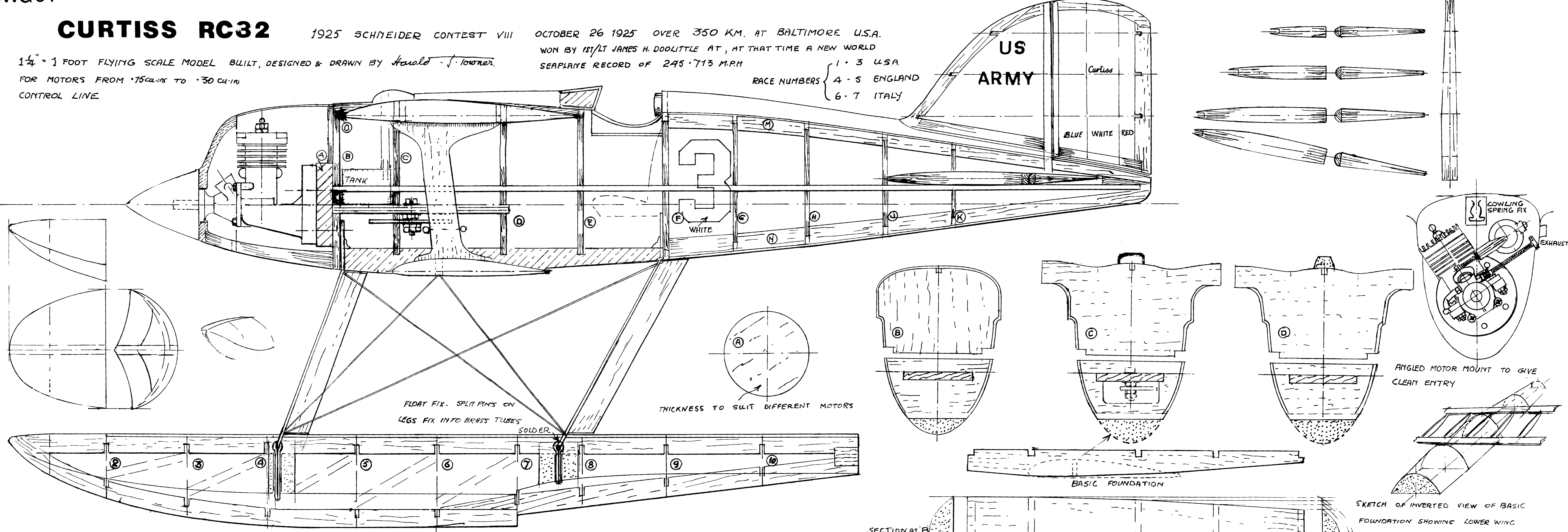
OCTOBER 26 1925 OVER 350 KM. AT BALTIMORE U.S.A.

WON BY 1ST/LT JAMES H. DOOLITTLE AT, AT THAT TIME A NEW WORLD SEAPLANE RECORD OF 245.715 MPH

1 1/4" x 1 FOOT FLYING SCALE MODEL BUILT, DESIGNED & DRAWN BY Harold J. Lowrey.
FOR MOTORS FROM .75 CU IN. TO .30 CU IN.
CONTROL LINE.

RACE NUMBERS { 1-3 USA
4-5 ENGLAND
6-7 ITALY

US
ARMY



CONSTRUCTION:
 MODEL IS BUILT UPON A BASIC FOUNDATION WHICH STRETCHES FROM FORMER B TO F & IS CARVED FROM SOLID NEOLYM Balsa TO WHICH THE LOWER WING IS ATTACHED OR SUBMERGED.
 LAY DOWN THE BASIC STRINGERS ON PLAN (PROTECT WITH GREASE PAPER) & ERECT THE LOWER HALVES OF THE FORMERS, UPSIDE DOWN BOAT FASHION.
 LIFT FROM BUILDING BOARD & ADD THE UPPER FORMERS 1/8" THICK FROM 'B' TO 'F' & 3/32" AFT.
 THE MOTOR IS MOUNTED ON COMMERCIAL MOTOR MOUNT SO THE BUILDER CAN MOUNT THE MOTOR AS HE LIKES, WITH SUITABLE DETACHABLE COWLING.
 THE COMPLETE FUSELAGE IS COVERED WITH 1/16" SHEET Balsa & THE REAR CONE FROM F CAN BE WRAPPED ROUND IN TWO PIECES FROM TOP CENTRE TO BOTTOM CENTRE EACH SIDE.
 FIX THE FLOAT LEGS BEFORE COVERING AS IT MEANS SPLITTING THE KEEL TO INSERT THEM, AND ARE FULLY SUPPORTED WITH WIRES TO FLOATS.
 ALTHOUGH THE DIHEDRAL IS 0° IT IS ADVISABLE TO RIG THEM 1° OTHERWISE THE WINGS APPEAR TO DROOP WHEN THE FLYING WIRES ARE TIGHT.
 COVER THE INSIDES OF THE WINGS TOP & BOTTOM, THEN ATTACH WIRES. 20 OR 22 SWG. MAKING FAST TO THE EXPOSED PARTS. COVER & 2 COATS CLEAR DOPE, 35° COLOUR - BLACK FUSELAGE & FLOATS, WINGS & ELEVATOR GOLD, RUDDER BLUE WHITE & RED.

