

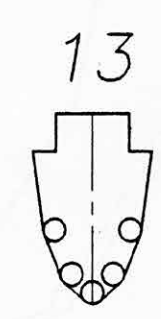
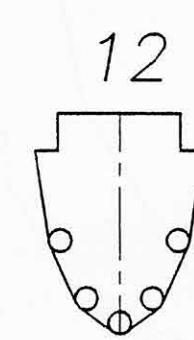
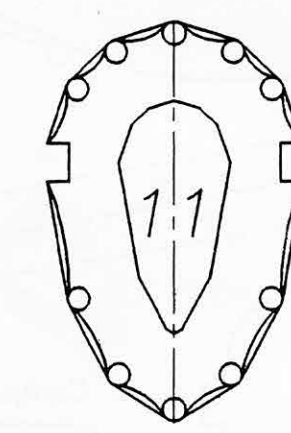
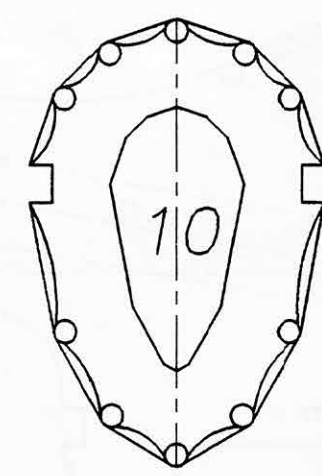
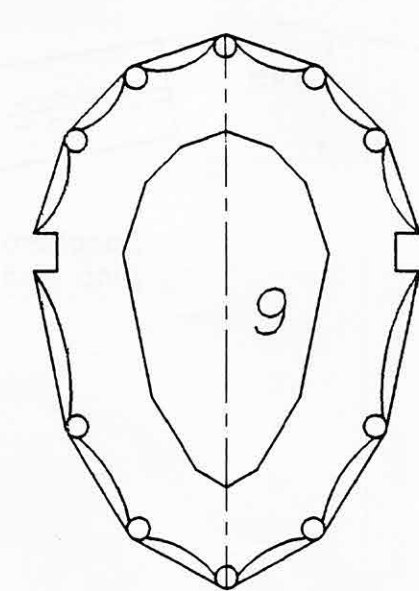
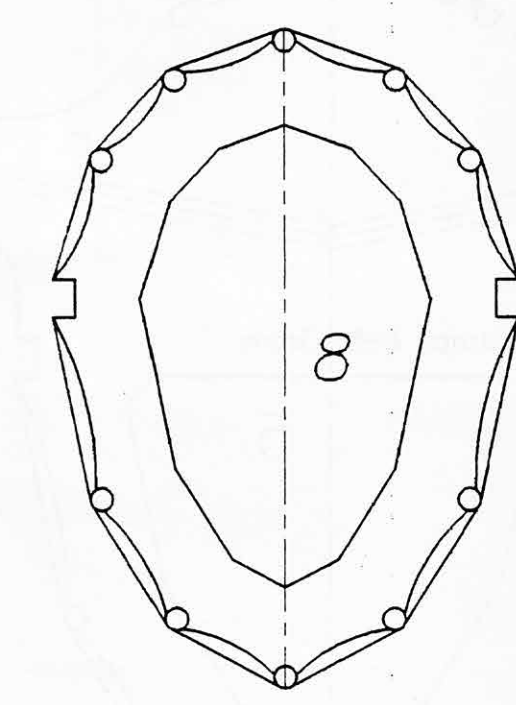
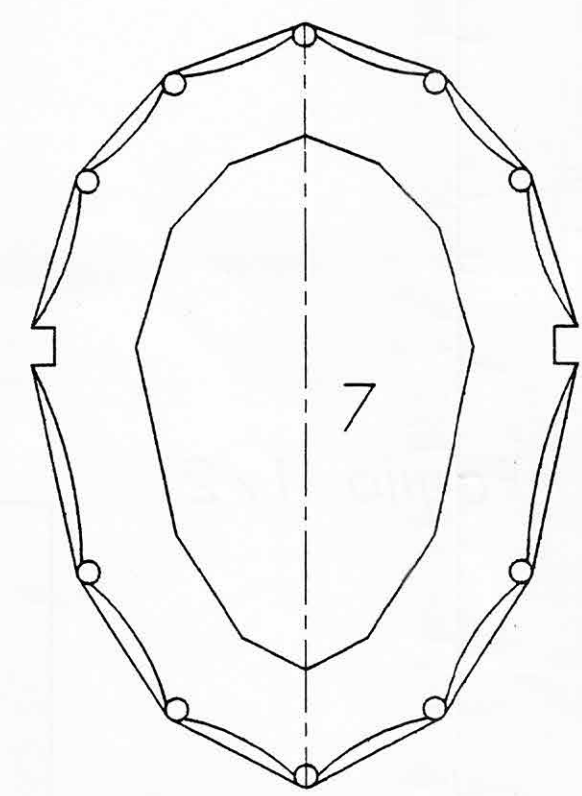
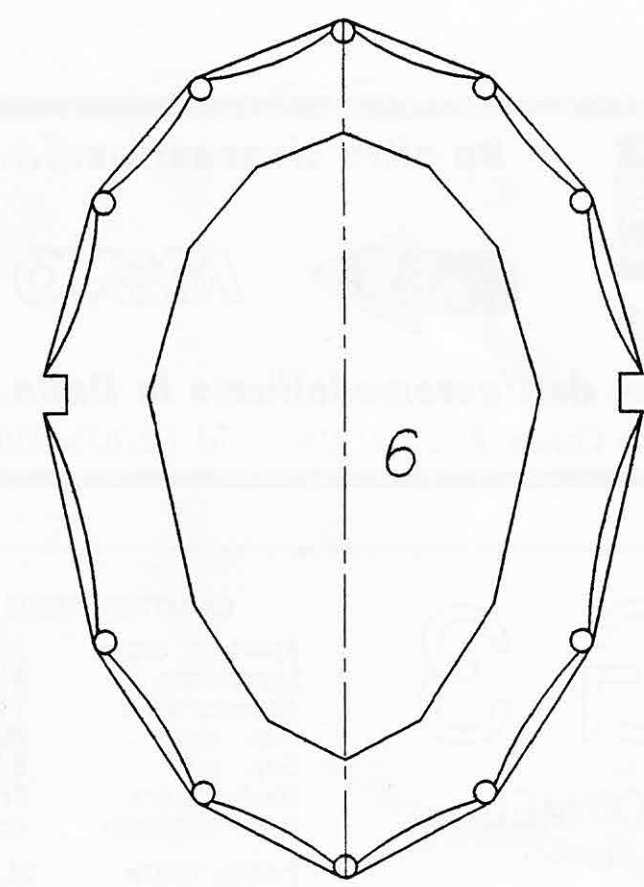
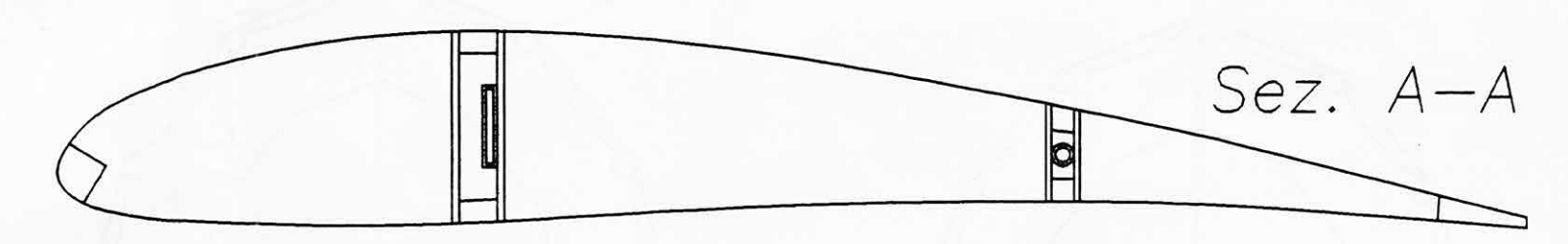
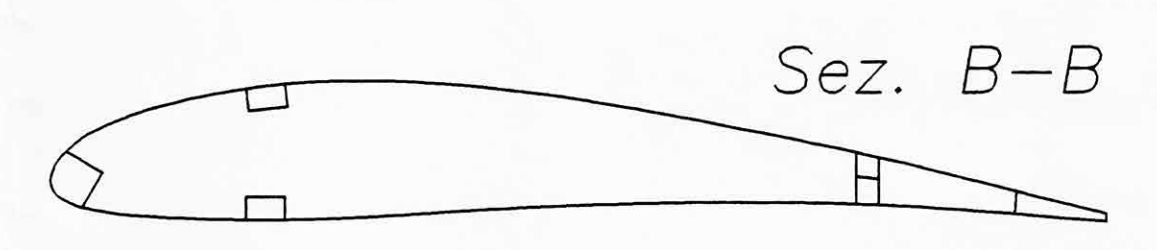
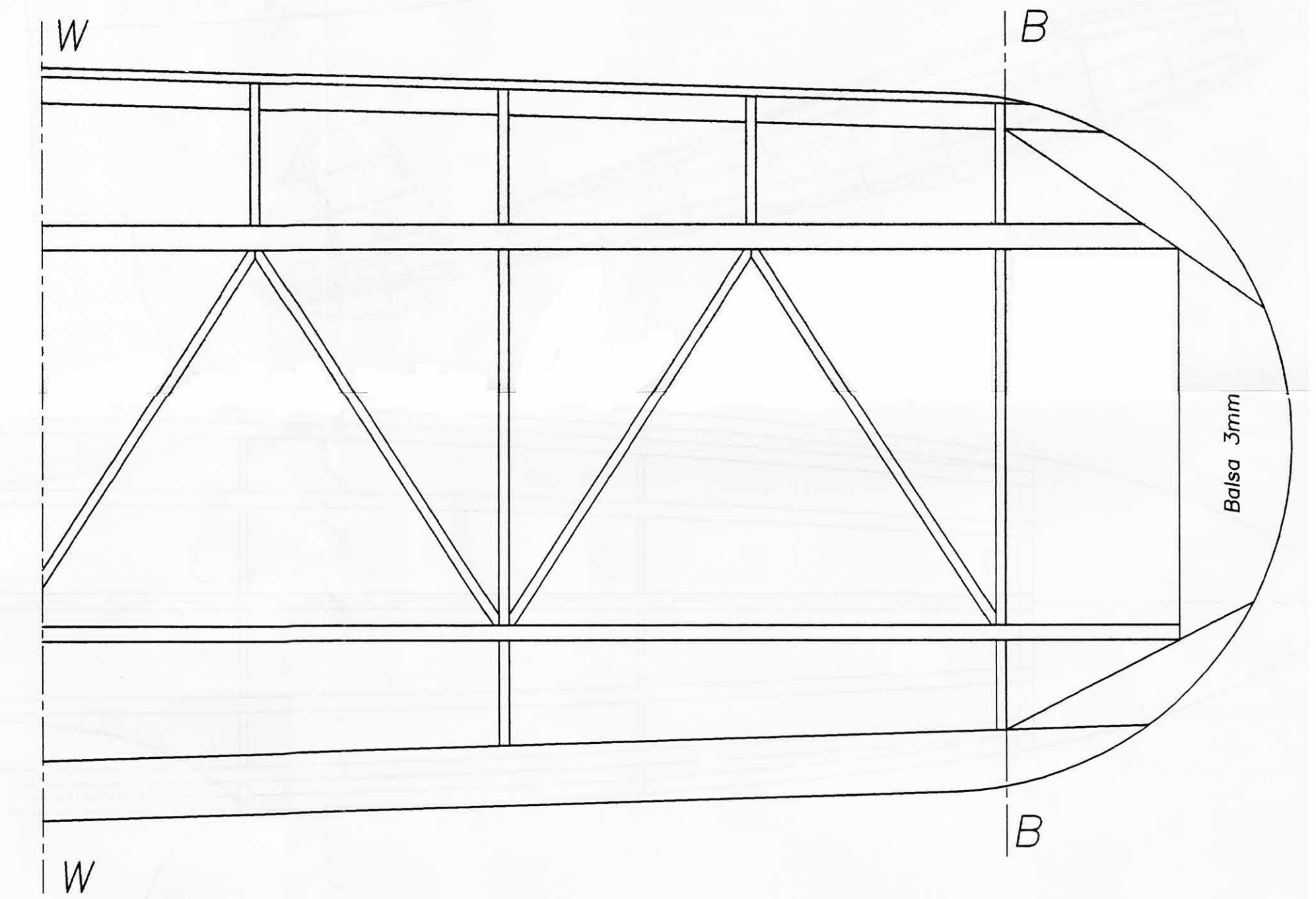
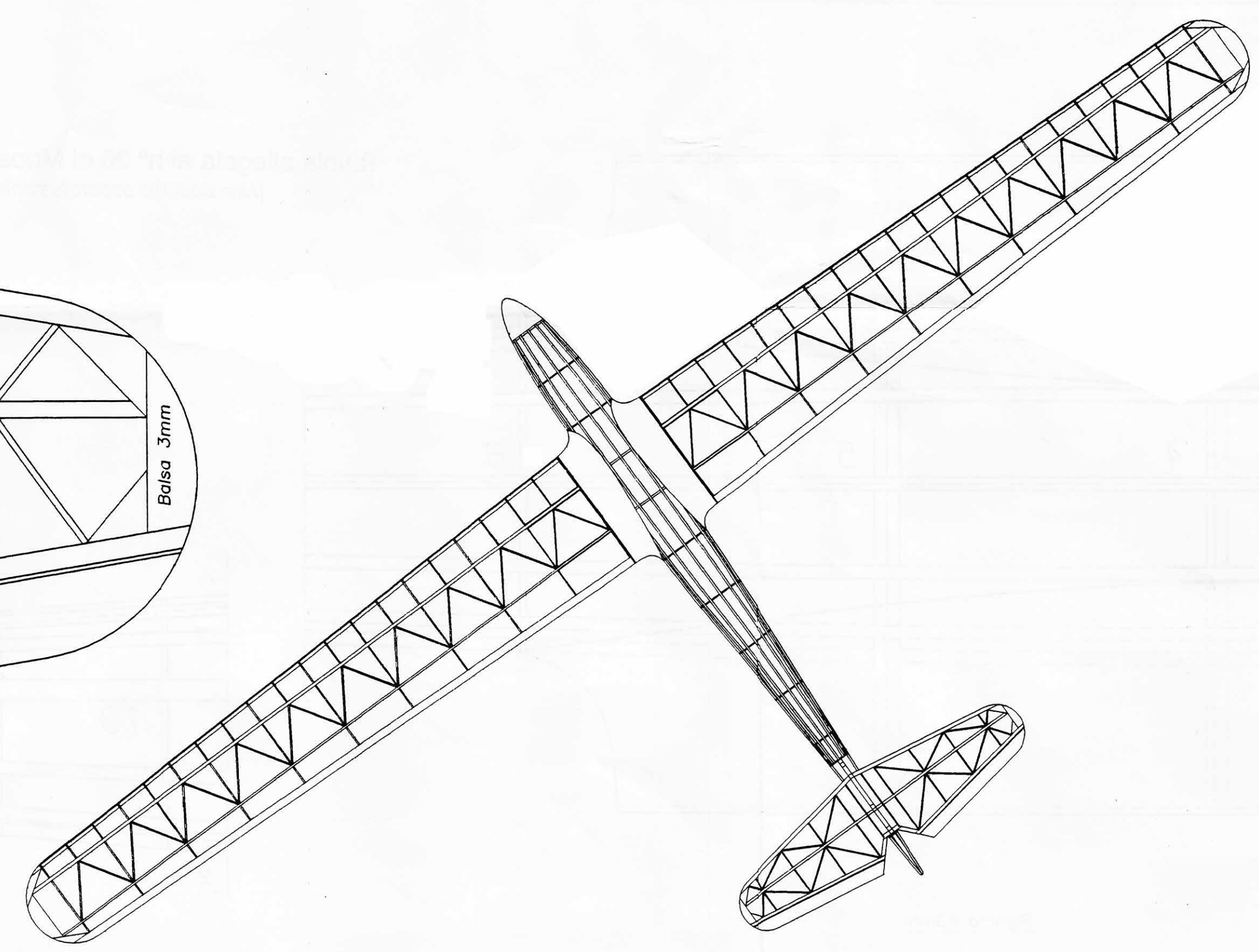
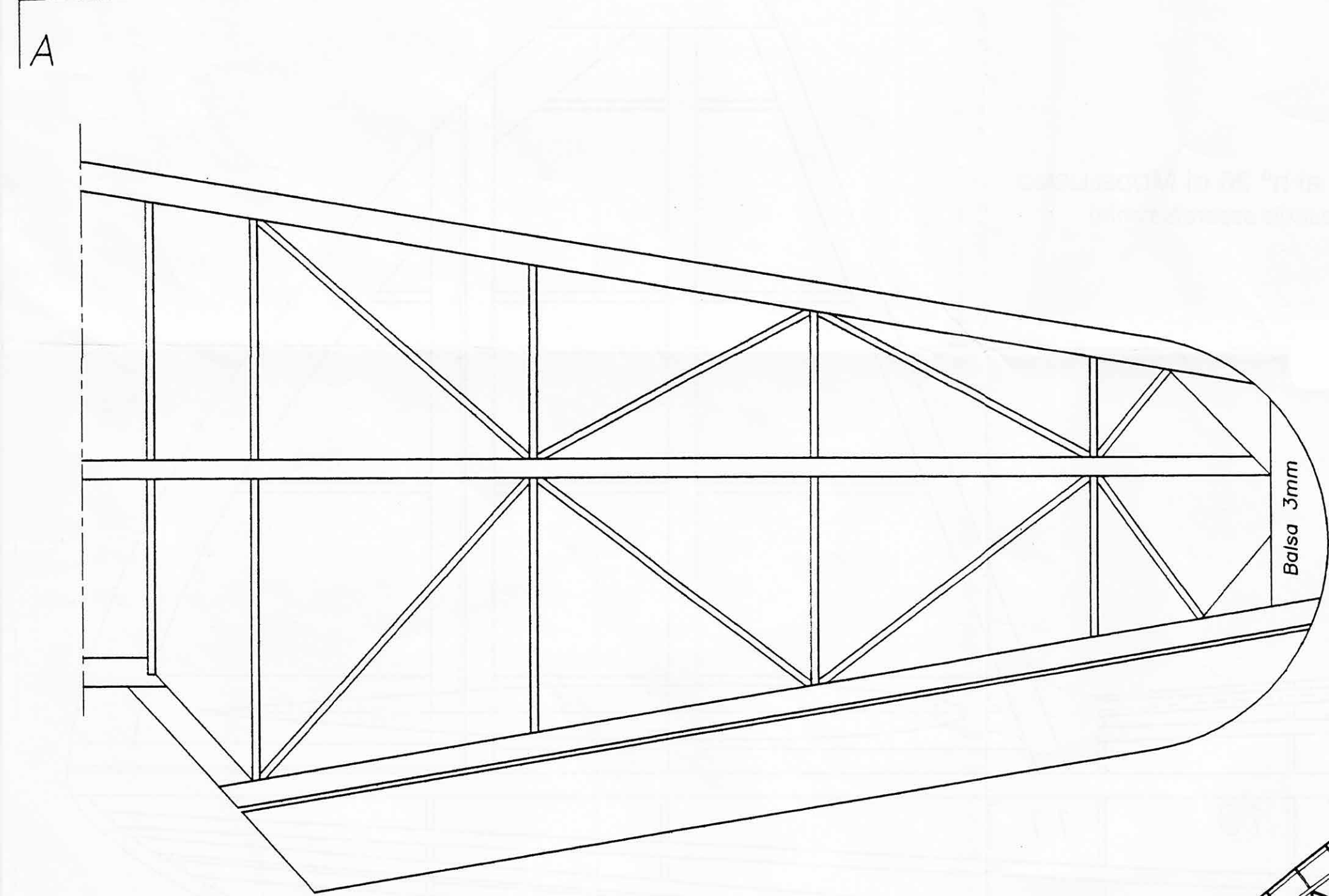
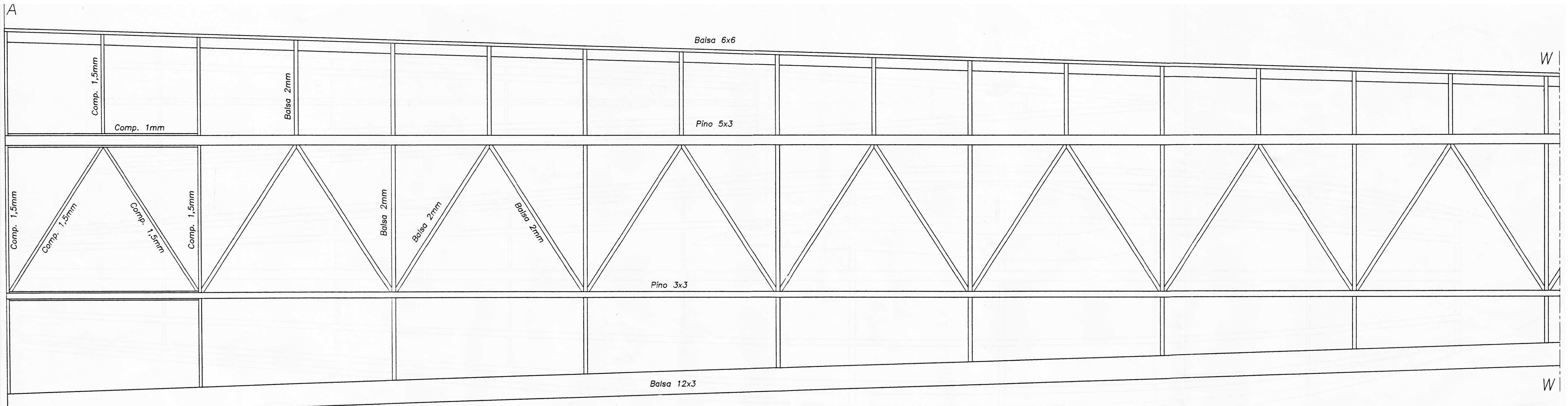
Pattino in comp. di betulla 3mm

Foglio 1/2

MG 3
DI GIULIO MELI
1942

CARATTERISTICHE	
Apertura alare	2280mm
Lunghezza	1100mm
Allungamento	14,5
Sup. alare	36dmq
Sup. p.o.	6,5dmq
Diedro alare	18%
Peso originale	665g
Profilo alare	SL1
Profilo p. o.	EIFFEL338

Mauro Capodaglio 1997



Tutte le ordinate sono in comp. di betulla da 1,5mm

Foglio 2/2

MG 3		CARATTERISTICHE	
DI GIULIO MELI		Apertura alare	2280mm
1942		Lunghezza	1100mm
		Allungamento	14,5
		Sup. alare	36dmq
		Sup. p.o.	6,5dmq
		Diedro alare	18%
		Peso originale	665g
		Profilo alare	SL1
		Profilo p. o.	EIFFEL338
<small>Maura Capodaglio 1997</small>			