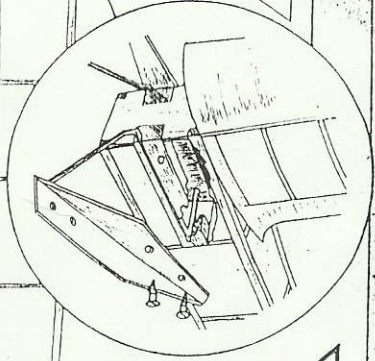
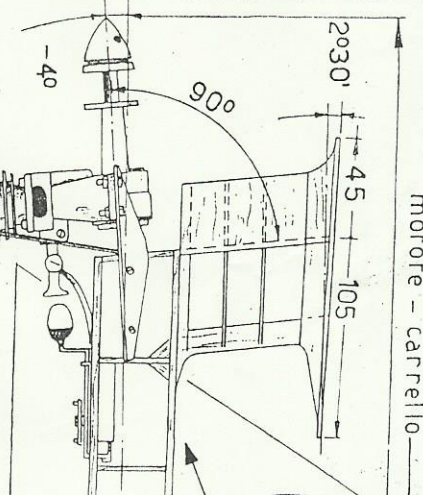


Particolare attacco motore - carrello

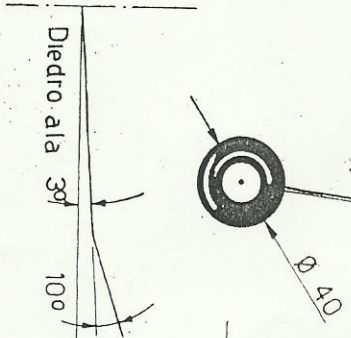
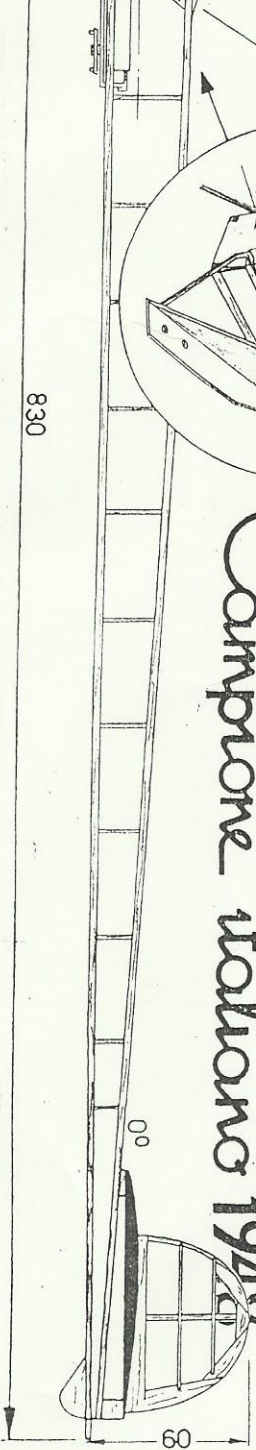


830

M 30

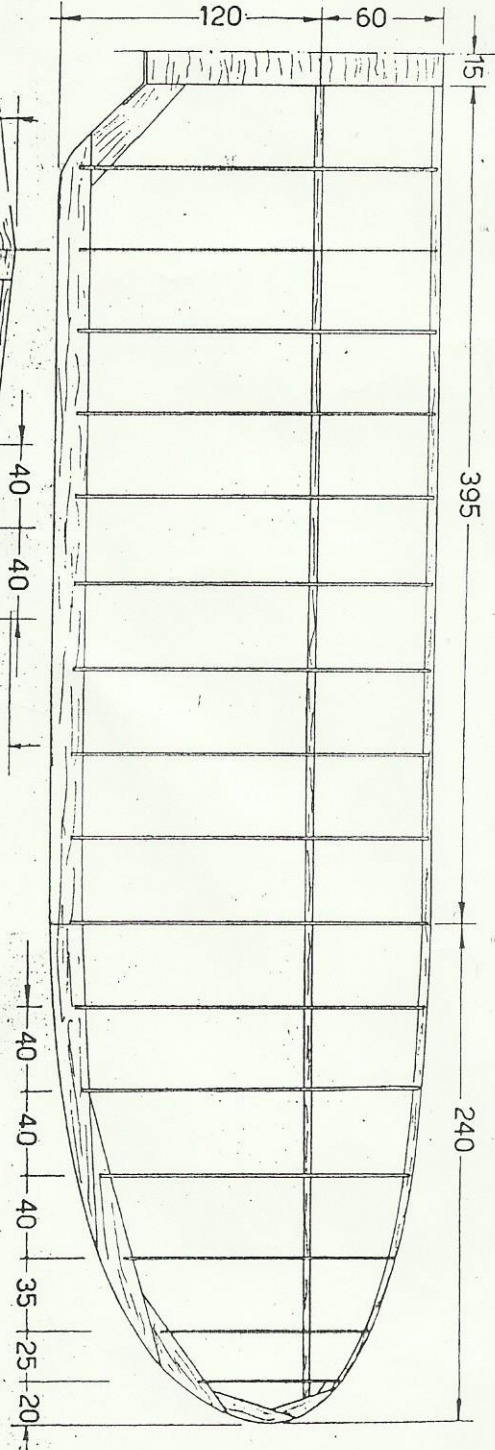
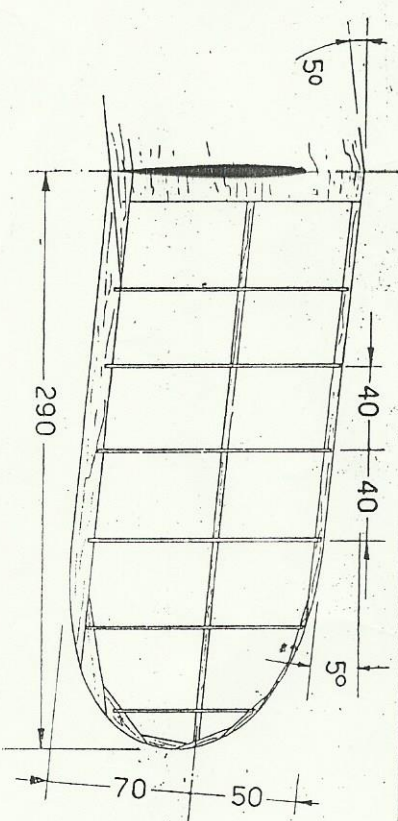
Campione italiano 1942

Progetto, Disegno e costruzione di Gino ANDREI - FIRENZE.



Apertura alare 1300
Lunghezza 830

- Peso totale, gr. 372.
- Superficie ala Dm^2 21,26
- Superficie Himone Dm^2 6,44
- Sezione max. fus. Cm^2 35,65
- Carico alare gr/dm^2 17,4
- Allungamento ala 8
- Motore "MOVO D2"



	Profilo GOLDBERG 65	
x	xi	xy
0	1,67	1,67
2,5	0,0	5,0
5	0,43	6,7
7,5	0,8	8,3
10	1,25	9,6
20	2,5	12,7
30	3,3	13,0
40	3,3	12,5
50	3,2	11,7
60	2,9	10,0
70	2,5	8,2
80	2,0	5,8
90	0,8	3,3
100	0,0	0,0