

remove rudder to help with assembly  
glue back on after elevator is fixed

2 off under tail fillets

2 off

under wi

10

0mm of aileron throw measured here  
or 14 degrees

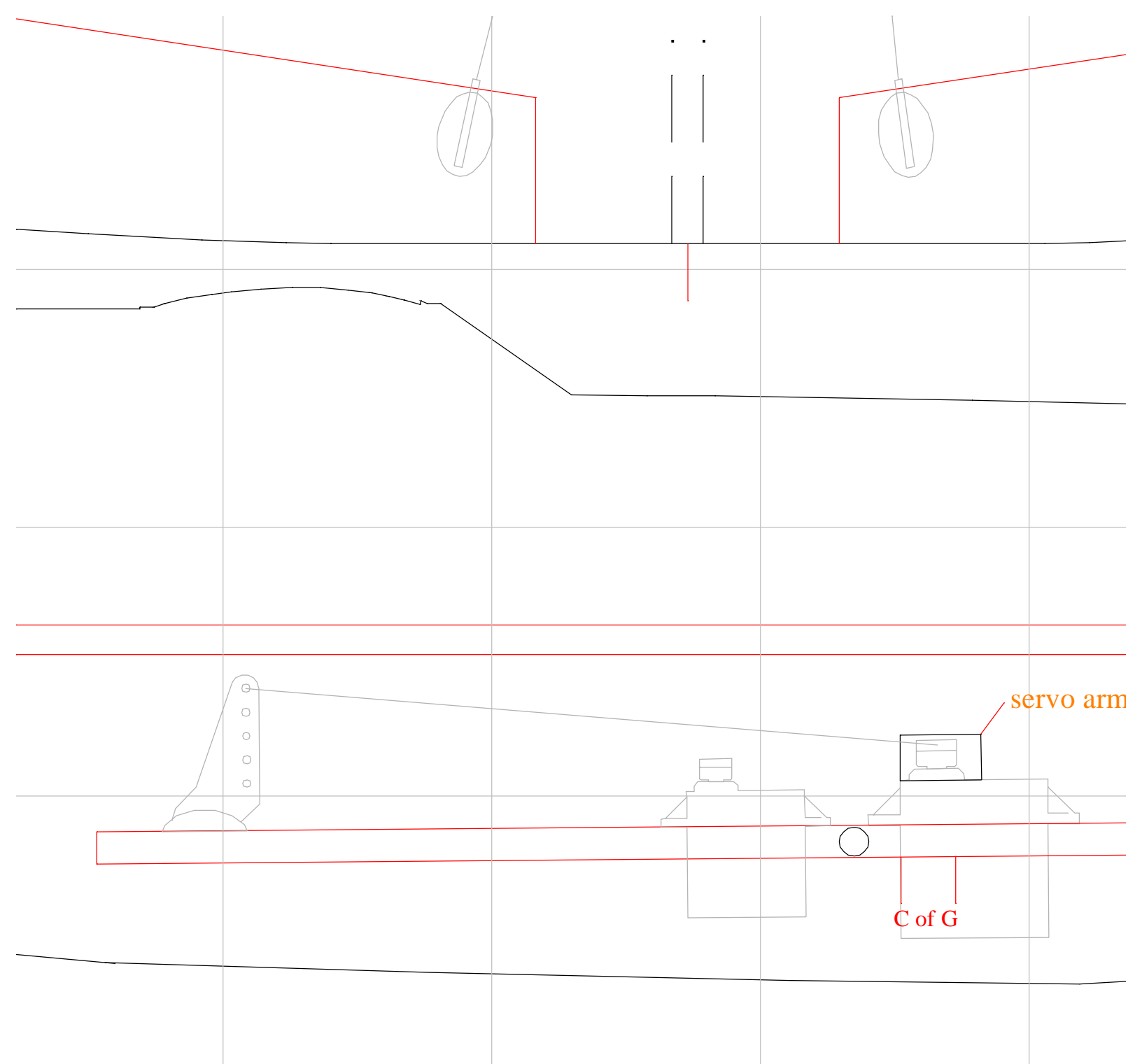


5.5MM carbon tube

ing doublers

cut out this area to clear servos  
on right doubler before gluing





10mm of elevato  
or 14.5 degree

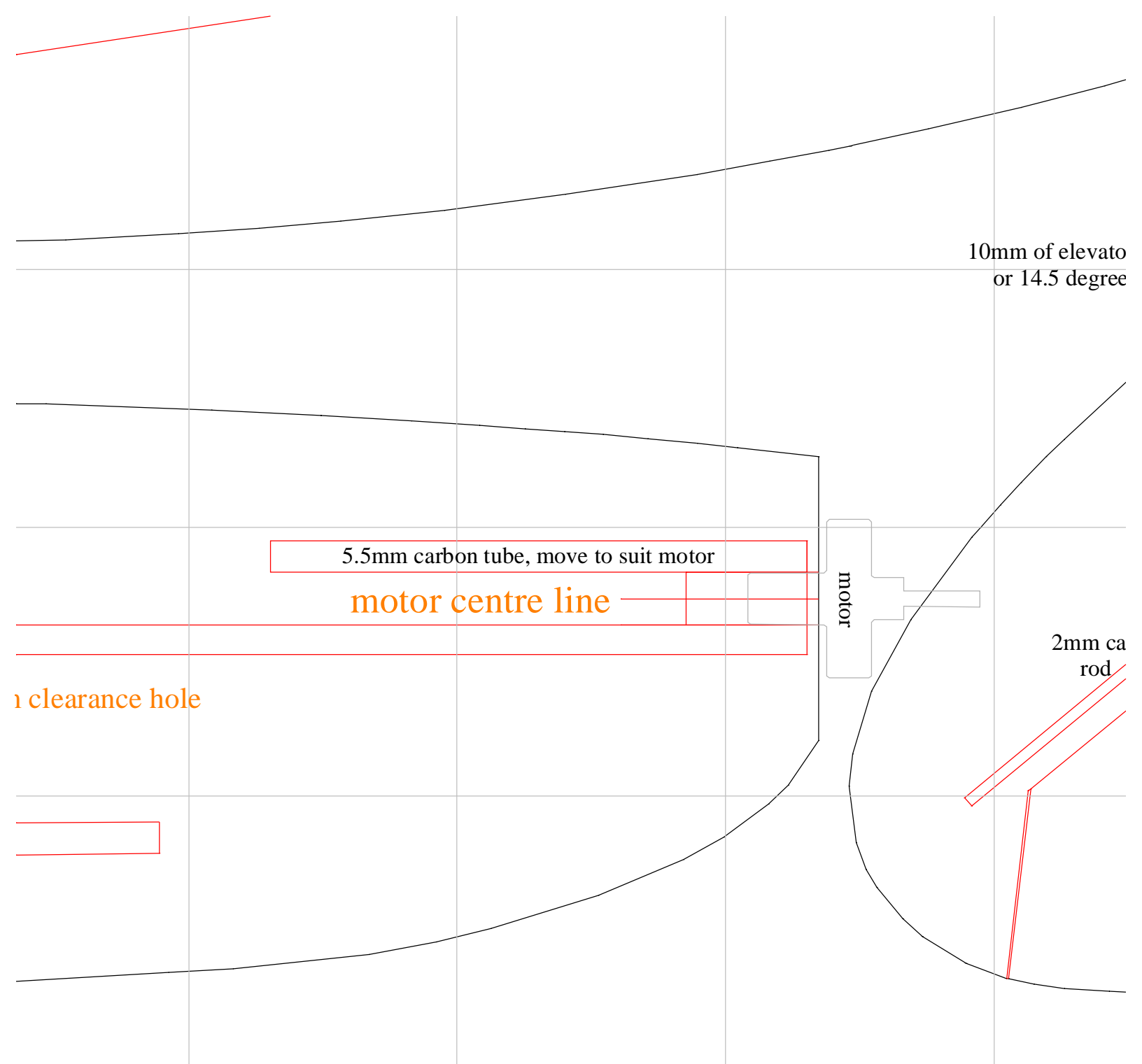
5.5mm carbon tube, move to suit motor

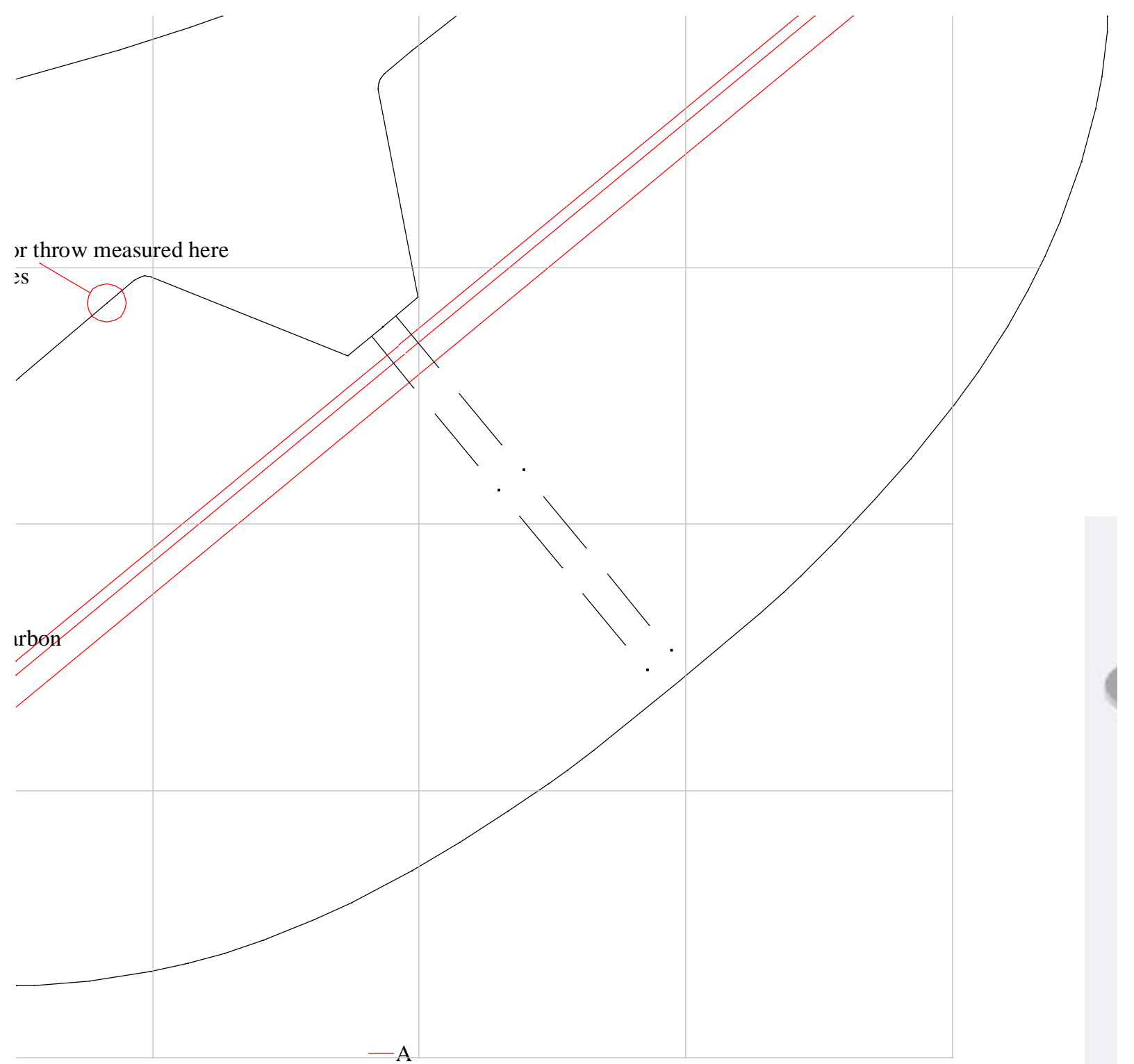
motor centre line

motor

2mm ca  
rod

1 clearance hole





sho:  
 mor

12 Ohm 1/4sq in magnets  
pulling 8 amps on 8\*4 prop

suitable motors

LKR240/5 12P

HT 240/5 S15W 12P

(8 amp min)

any brushless esc >12amp

battery used

kokam 2cell 1500mah

aileron servo

supertec micro 2bb mg

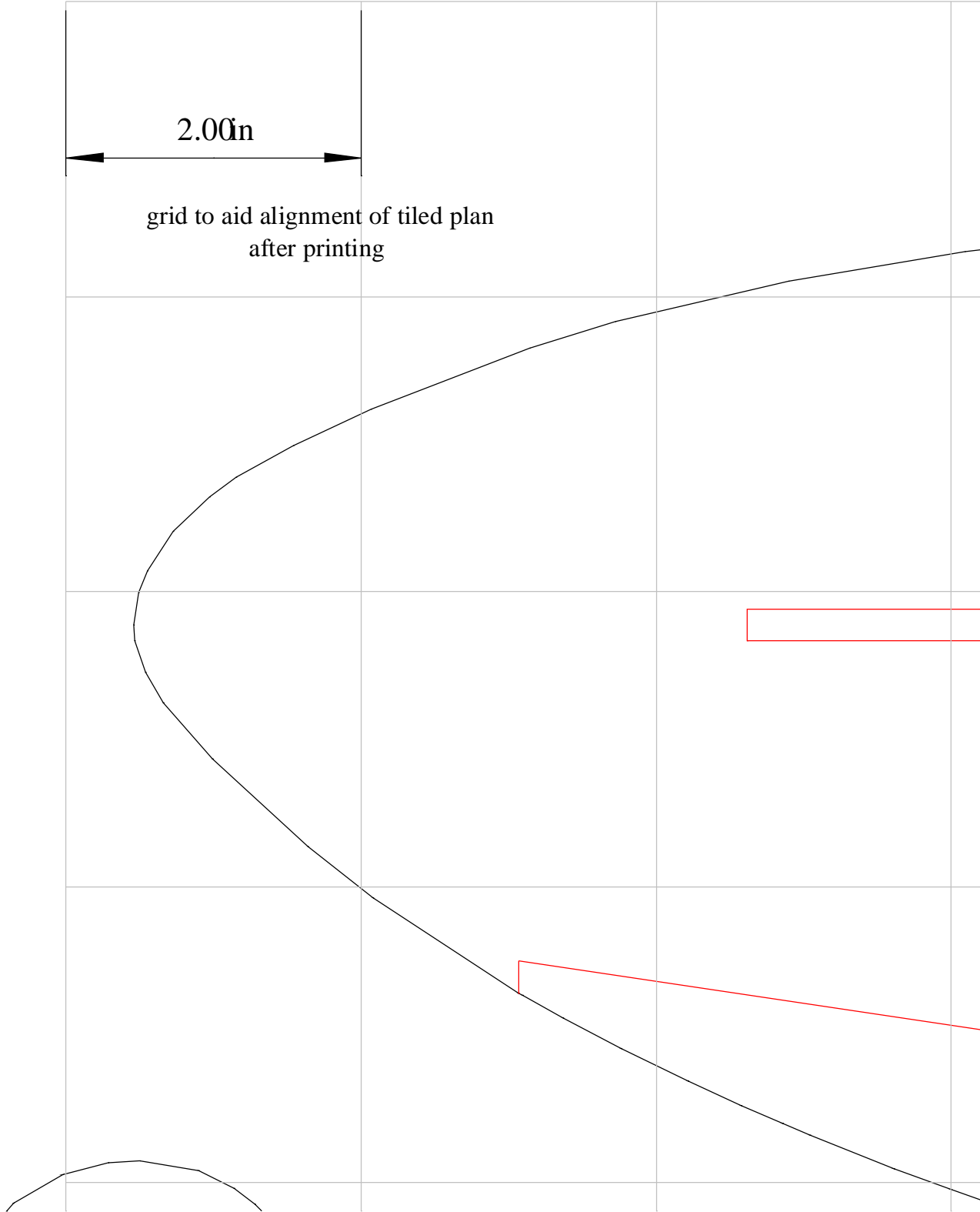
elevator servo

supertec naro



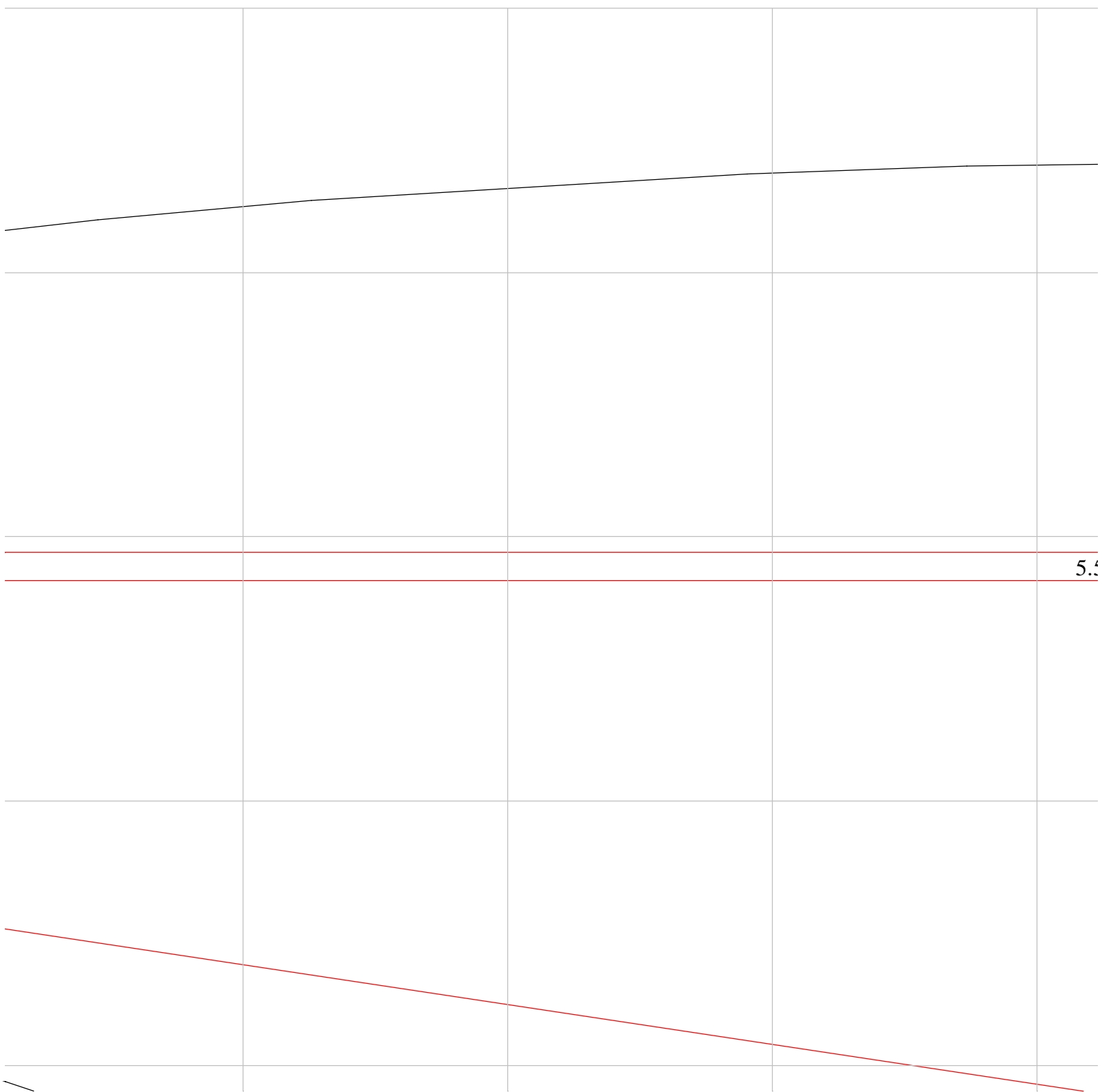
rt flight video at <http://www.electrifly.uk.com/mad/kev/P1010002.MOV>

re info at <http://electrifly.uk.com/forum/showthread.php?t=996&page=1&pp=15>



$2.00n$

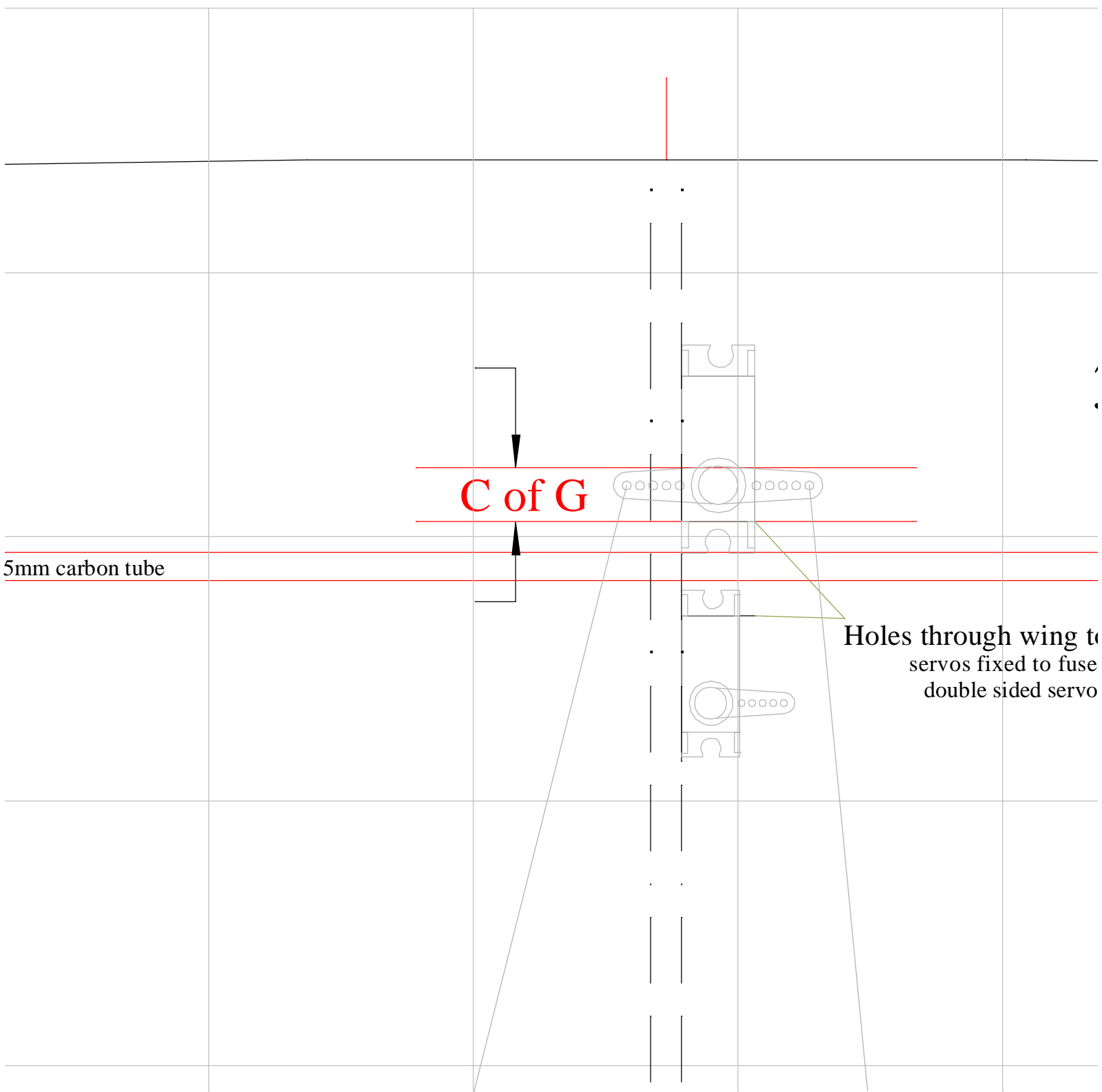
grid to aid alignment of tiled plan  
after printing



5.4

/





**C of G**

**5mm carbon tube**

**Holes through wing to servos fixed to fuse double sided servo**



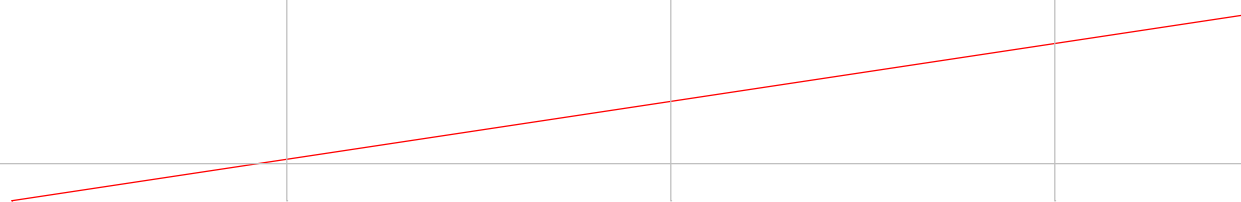
# 38" wingspan MK IX spitfire from 6M

---

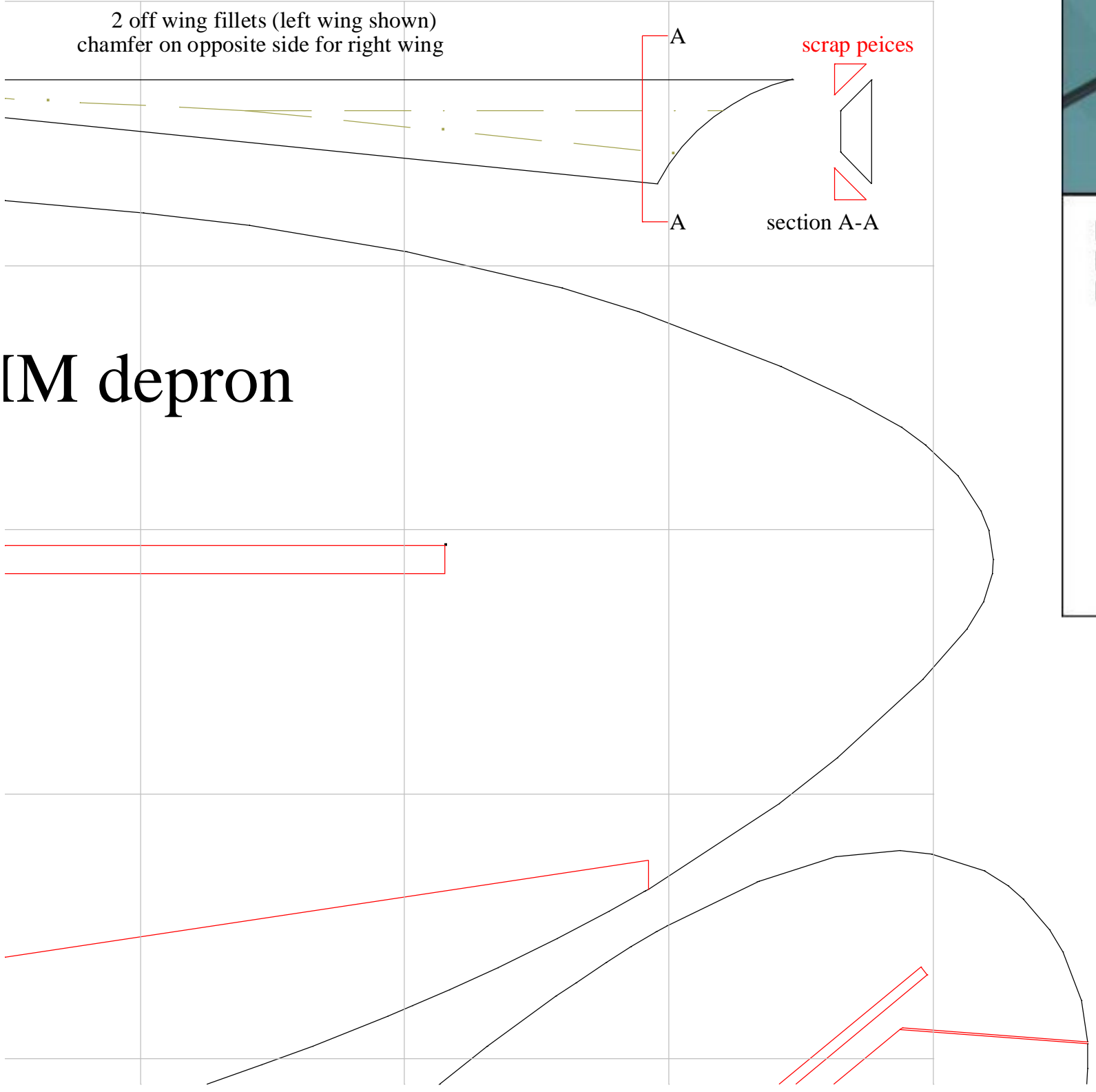
all carbon tube spars to be half hour epoxied in

---

o accept servos  
lage with  
tape



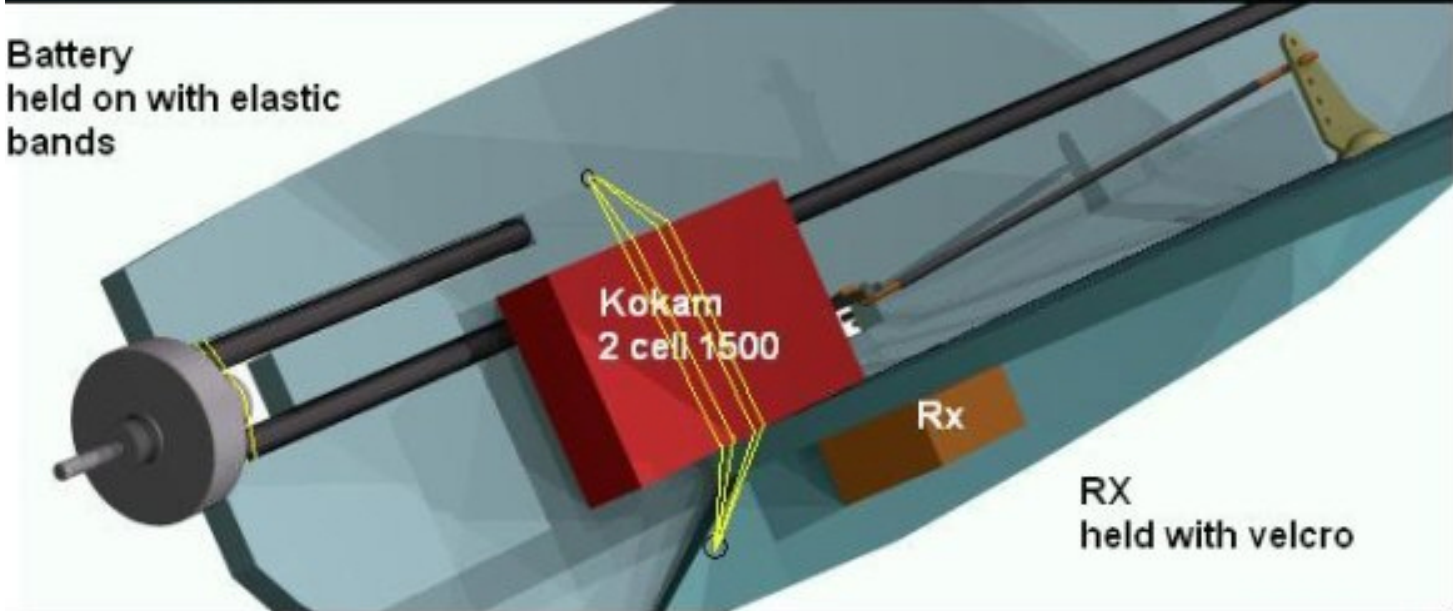
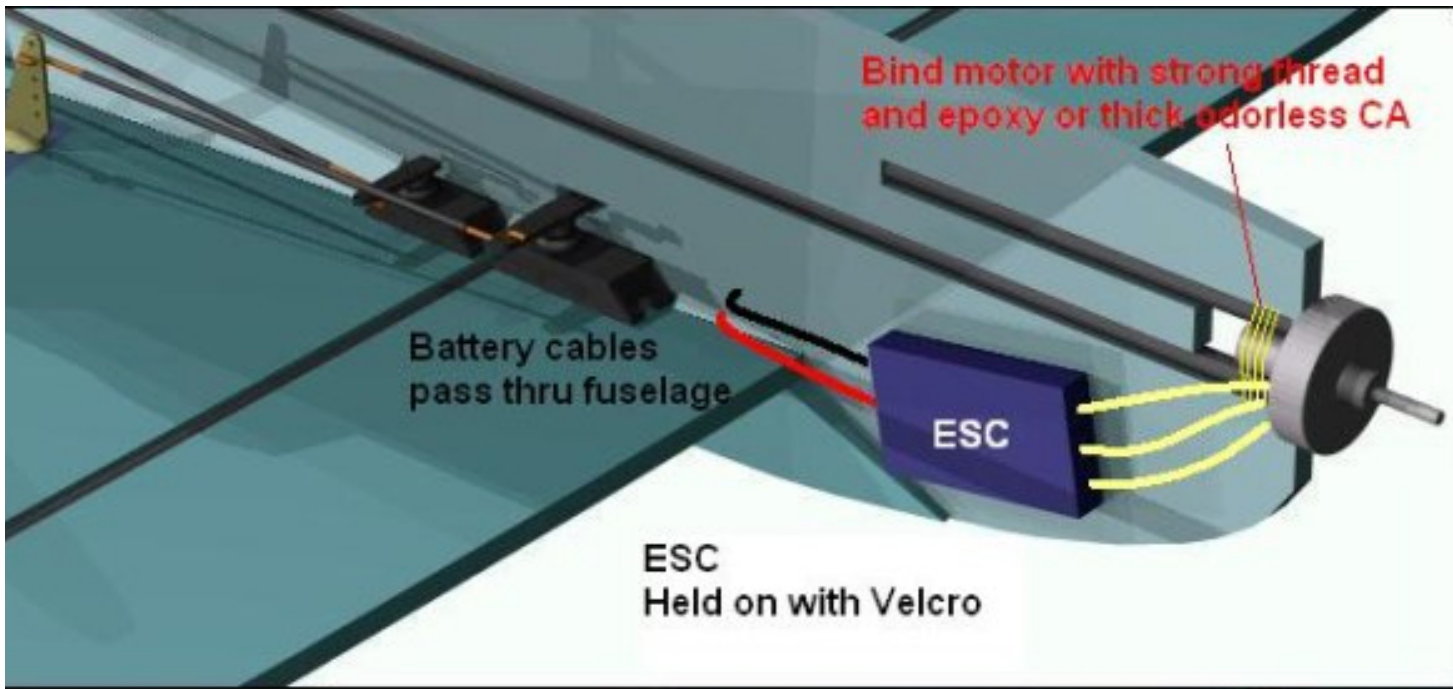
2 off wing fillets (left wing shown)  
chamfer on opposite side for right wing



scrap peices

section A-A

[M depron



prototype setup info

side thrust 1.5 degrees  
down thrust 2.0 degrees

motor used on prototype  
home made brushless  
21 turns of 25swg  
12 off 1/4scr magnets