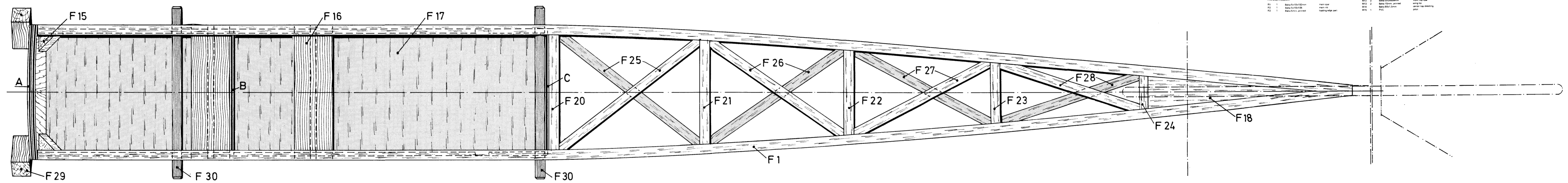
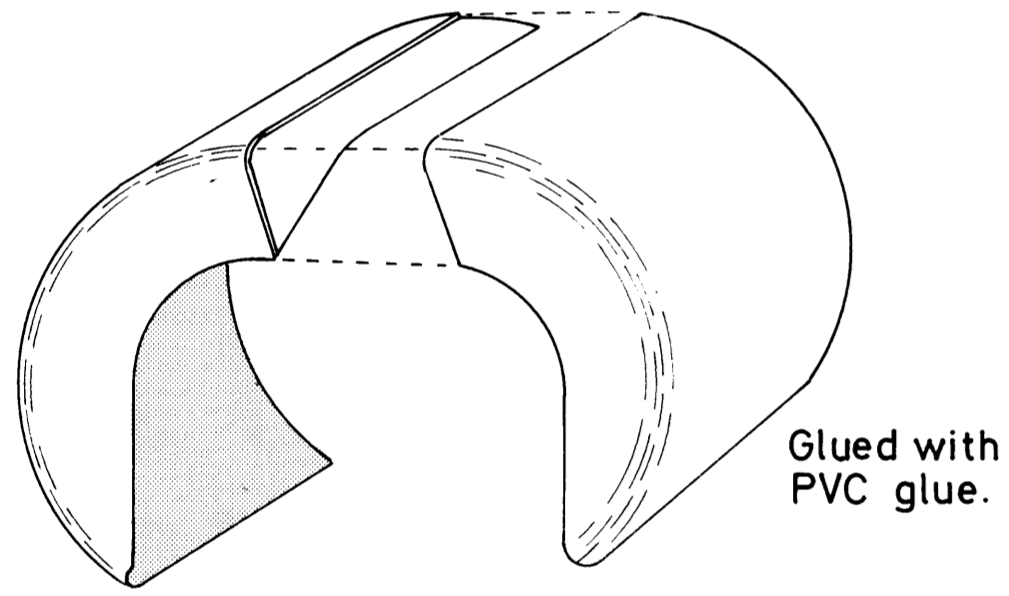


MATERIALS		MATERIALS		MATERIALS		MATERIALS	
Part No.	Description	Part No.	Description	Part No.	Description	Part No.	Description
F1	Balsa 5x10x100	F11	Balsa 5x10x100	F21	Balsa 5x10x100	F31	Balsa 5x10x100
F2	Balsa 5x10x100	F12	Balsa 5x10x100	F22	Balsa 5x10x100	F32	Balsa 5x10x100
F3	Balsa 5x10x100	F13	Balsa 5x10x100	F23	Balsa 5x10x100	F33	Balsa 5x10x100
F4	Balsa 5x10x100	F14	Balsa 5x10x100	F24	Balsa 5x10x100	F34	Balsa 5x10x100
F5	Balsa 5x10x100	F15	Balsa 5x10x100	F25	Balsa 5x10x100	F35	Balsa 5x10x100
F6	Balsa 5x10x100	F16	Balsa 5x10x100	F26	Balsa 5x10x100	F36	Balsa 5x10x100
F7	Balsa 5x10x100	F17	Balsa 5x10x100	F27	Balsa 5x10x100	F37	Balsa 5x10x100
F8	Balsa 5x10x100	F18	Balsa 5x10x100	F28	Balsa 5x10x100	F38	Balsa 5x10x100
F9	Balsa 5x10x100	F19	Balsa 5x10x100	F29	Balsa 5x10x100	F39	Balsa 5x10x100
F10	Balsa 5x10x100	F20	Balsa 5x10x100	F30	Balsa 5x10x100	F40	Balsa 5x10x100
F11	Balsa 5x10x100	F21	Balsa 5x10x100	F31	Balsa 5x10x100	F41	Balsa 5x10x100
F12	Balsa 5x10x100	F22	Balsa 5x10x100	F32	Balsa 5x10x100	F42	Balsa 5x10x100
F13	Balsa 5x10x100	F23	Balsa 5x10x100	F33	Balsa 5x10x100	F43	Balsa 5x10x100
F14	Balsa 5x10x100	F24	Balsa 5x10x100	F34	Balsa 5x10x100	F44	Balsa 5x10x100
F15	Balsa 5x10x100	F25	Balsa 5x10x100	F35	Balsa 5x10x100	F45	Balsa 5x10x100
F16	Balsa 5x10x100	F26	Balsa 5x10x100	F36	Balsa 5x10x100	F46	Balsa 5x10x100
F17	Balsa 5x10x100	F27	Balsa 5x10x100	F37	Balsa 5x10x100	F47	Balsa 5x10x100
F18	Balsa 5x10x100	F28	Balsa 5x10x100	F38	Balsa 5x10x100	F48	Balsa 5x10x100
F19	Balsa 5x10x100	F29	Balsa 5x10x100	F39	Balsa 5x10x100	F49	Balsa 5x10x100
F20	Balsa 5x10x100	F30	Balsa 5x10x100	F40	Balsa 5x10x100	F50	Balsa 5x10x100

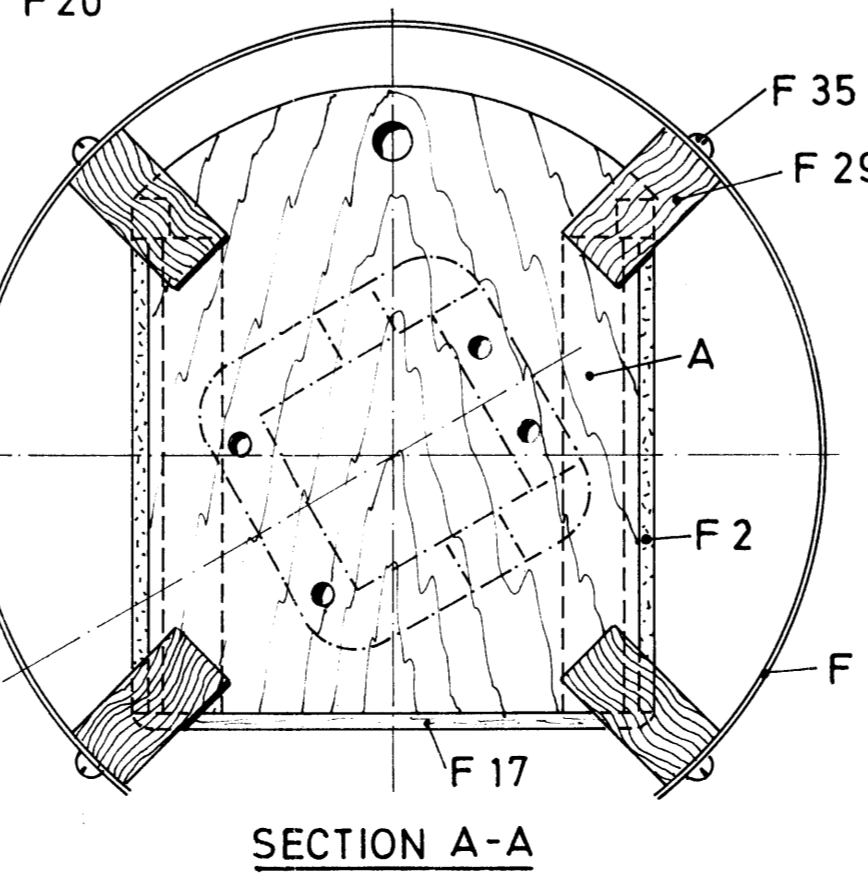
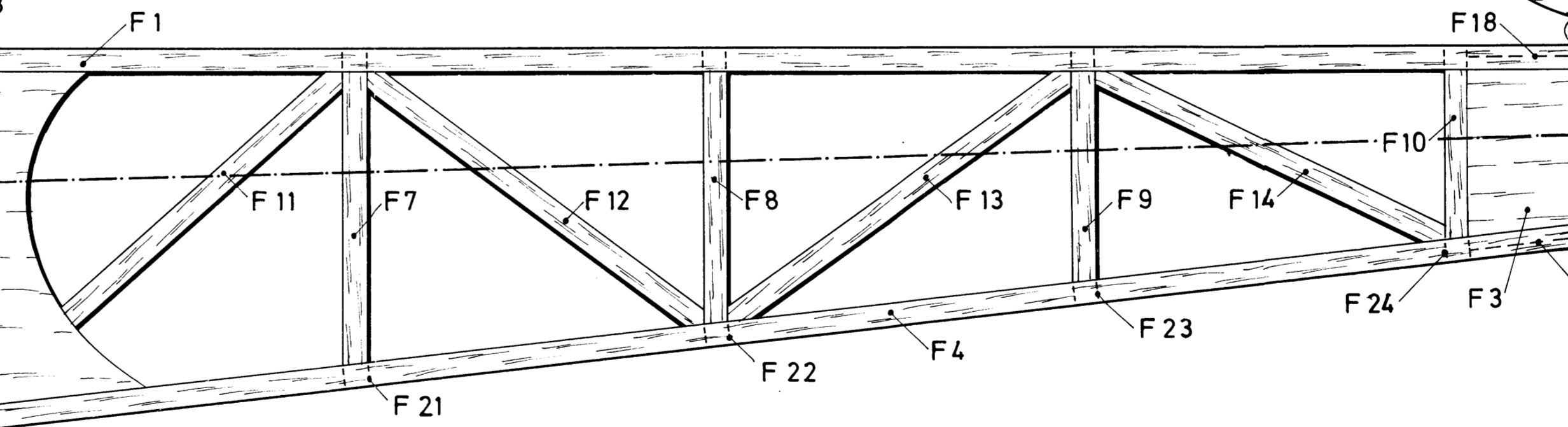
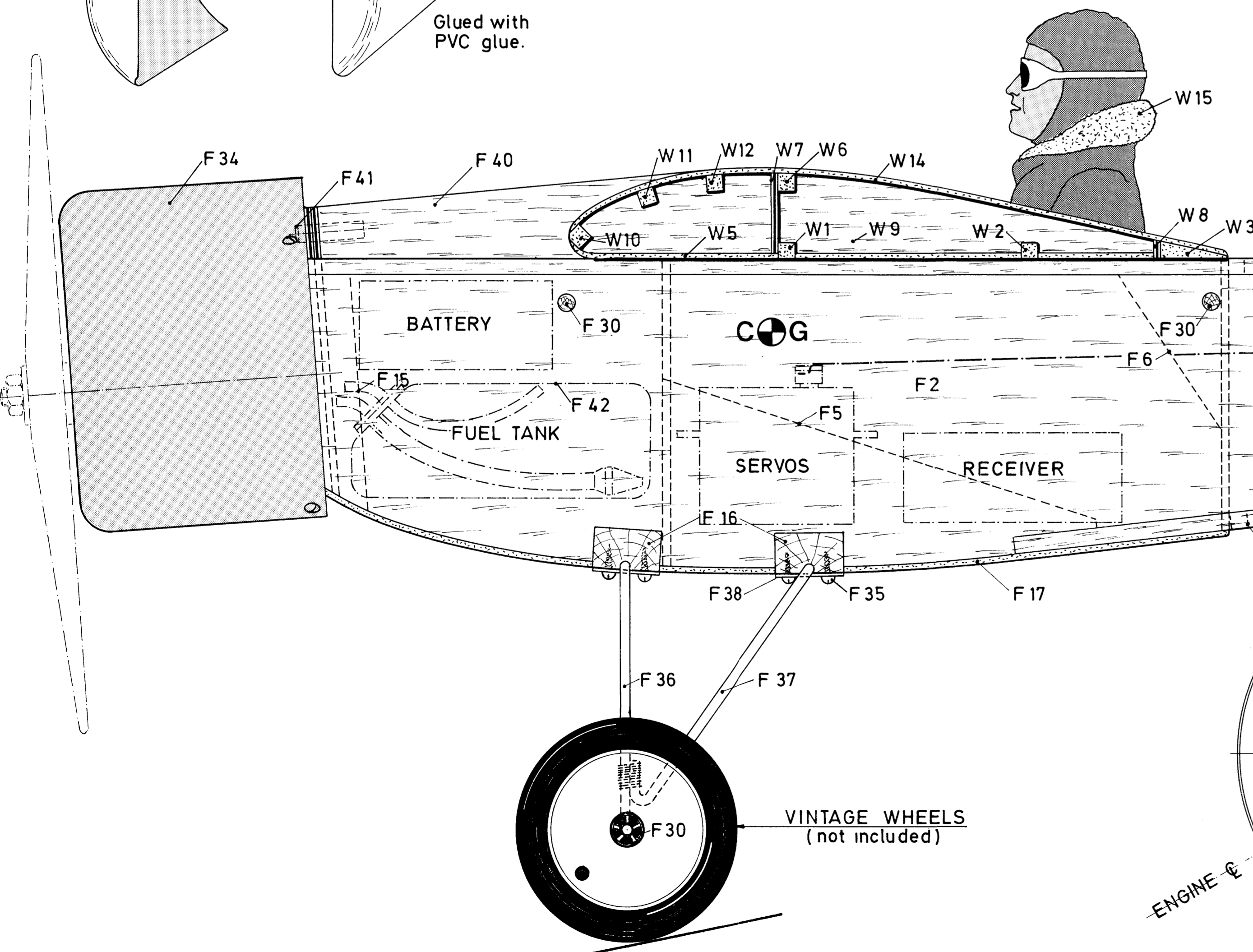
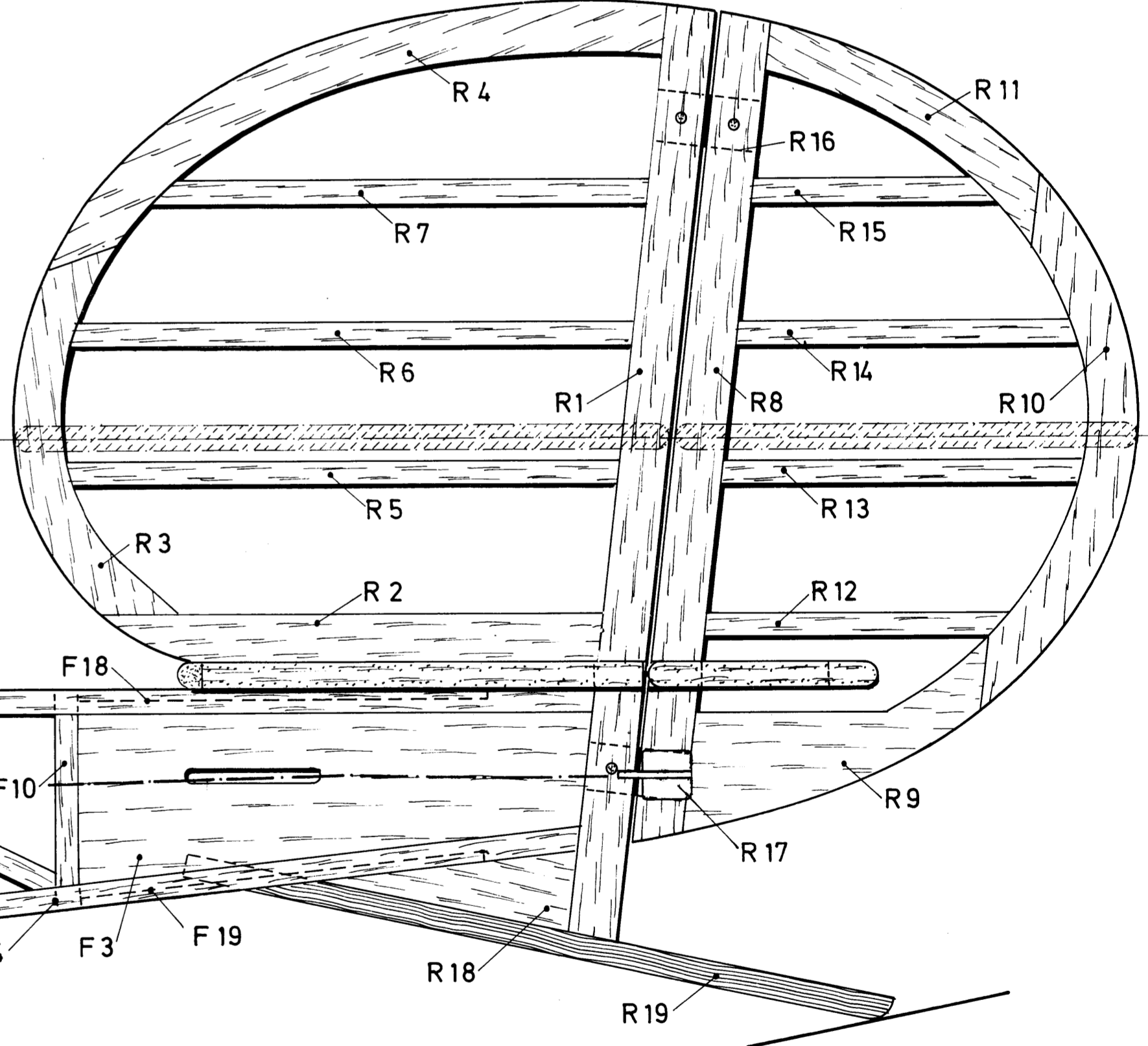
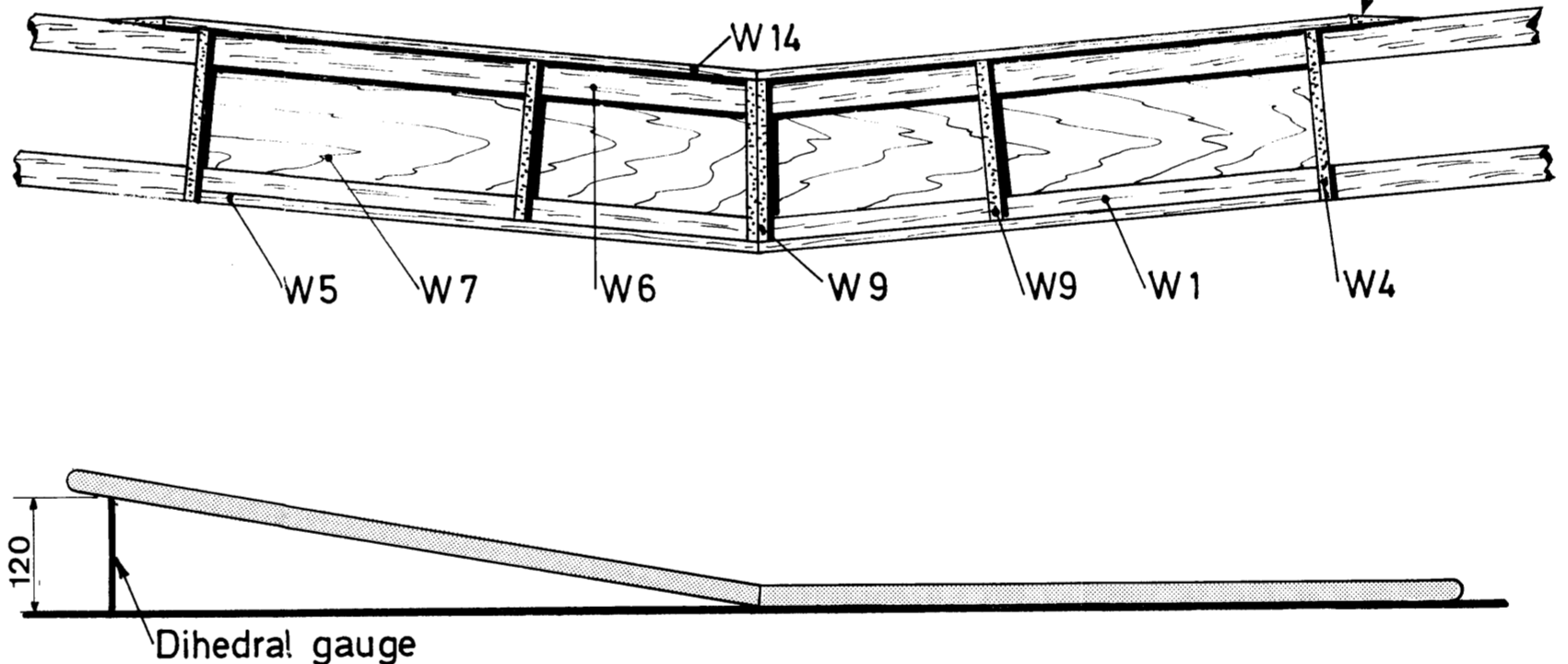
FUSELAGE TOP VIEW



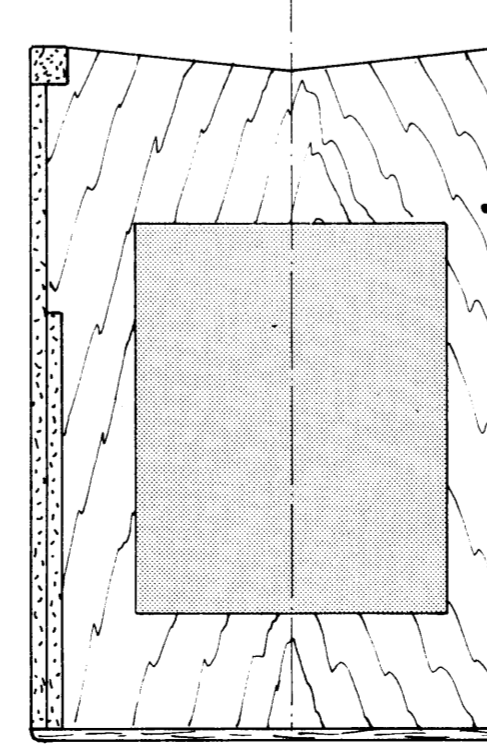
ENGINE COWL ASSEMBLING



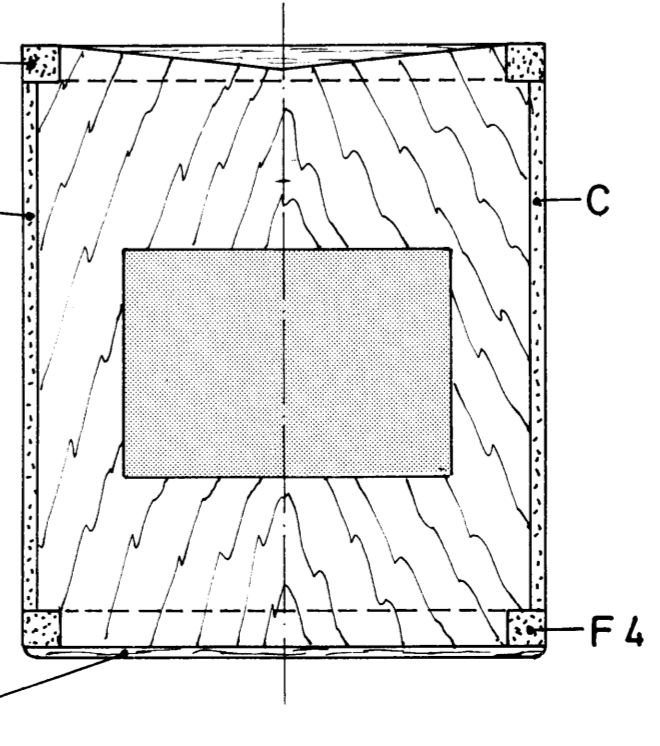
WING SECTION X-X



SECTION B-B



SECTION C-C



BARONNET

DESIGNED BY MARCEL ENGELBERT

TECHNICAL DATA

Wing span	1300 mm
Wing area	24,35 dm ²
Total area	30,85 dm ²
Wing loading	40 gr/dm ²
Weight without RC	900 gr
Engine	2,5 - 4 cc



