

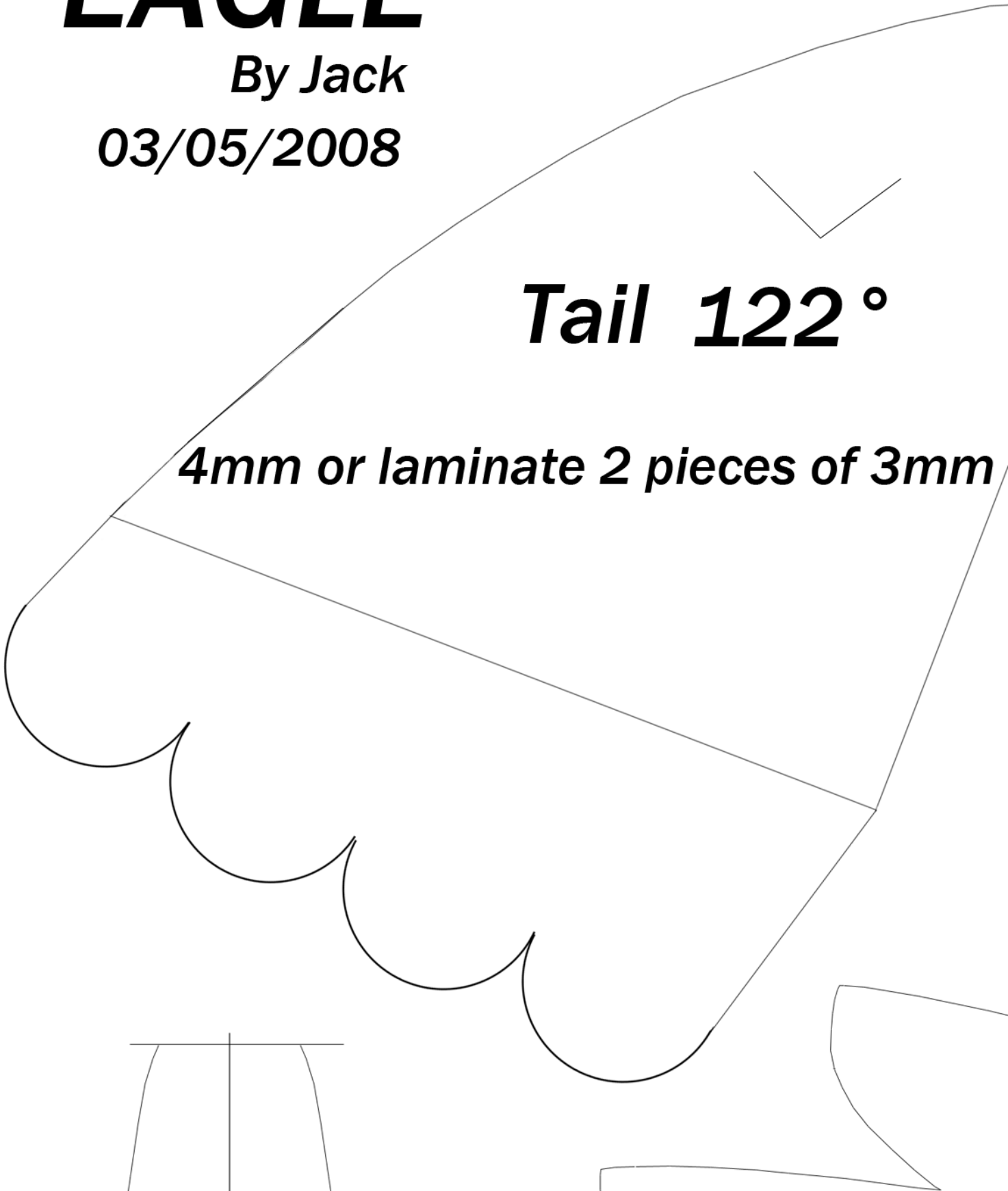
EAGLE

By Jack

03/05/2008

Tail 122°

4mm or laminate 2 pieces of 3mm

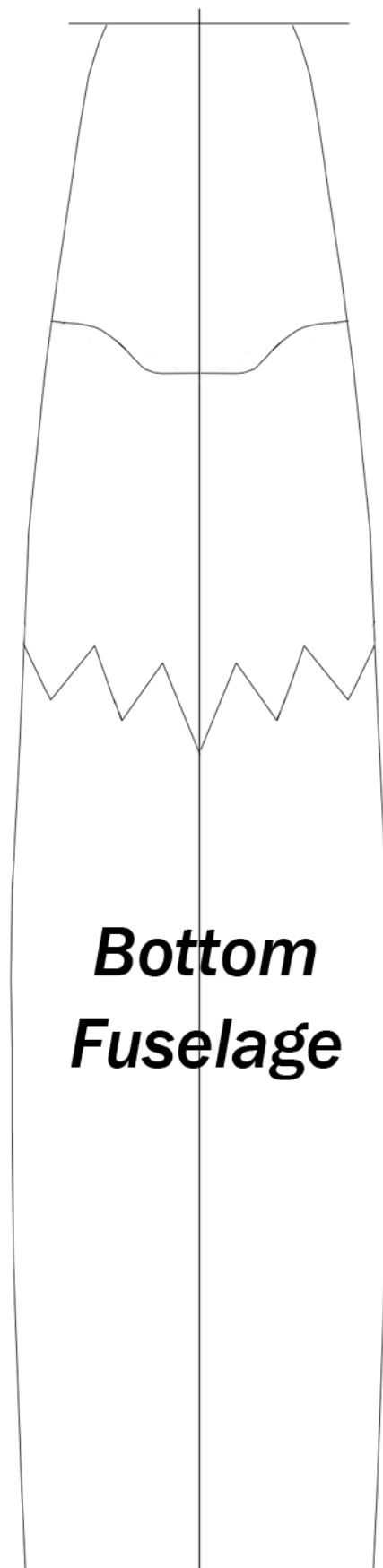




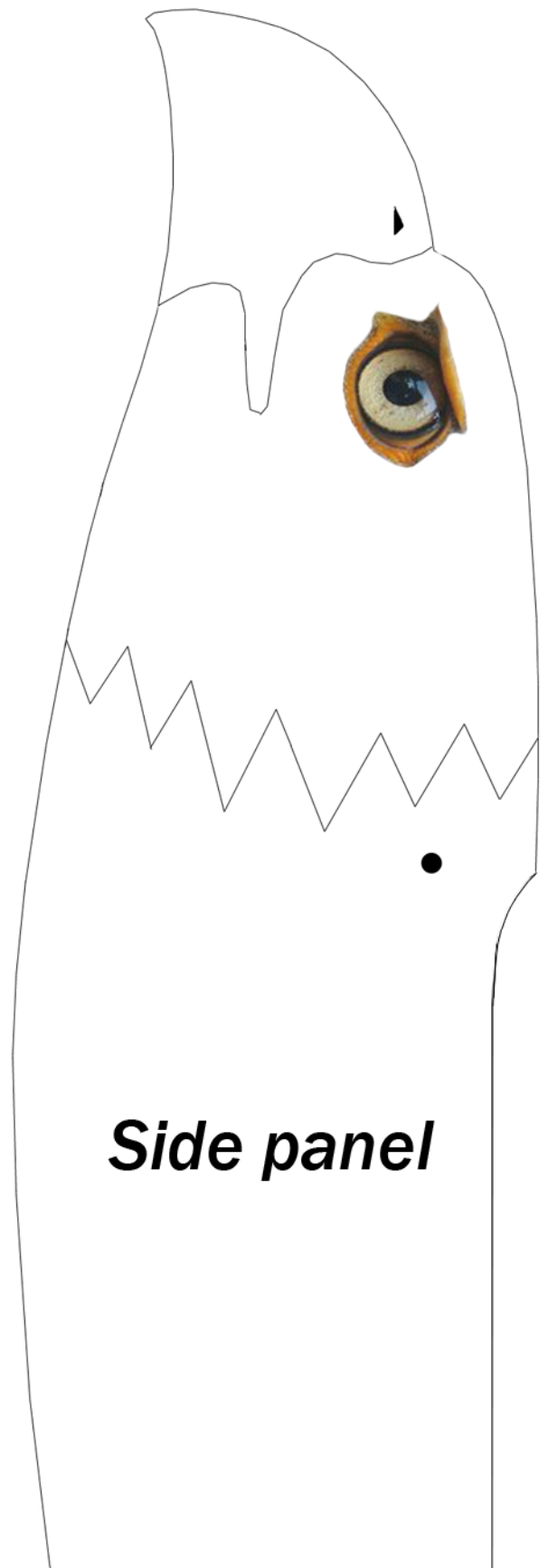
***More plans here
<http://blog.yam.com>***

***Main wing
Top section***

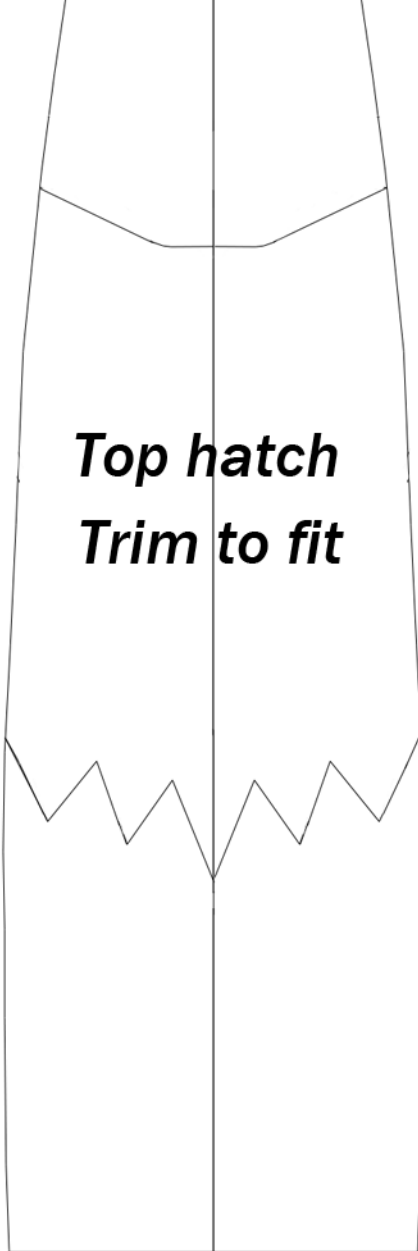
com/jacoda88



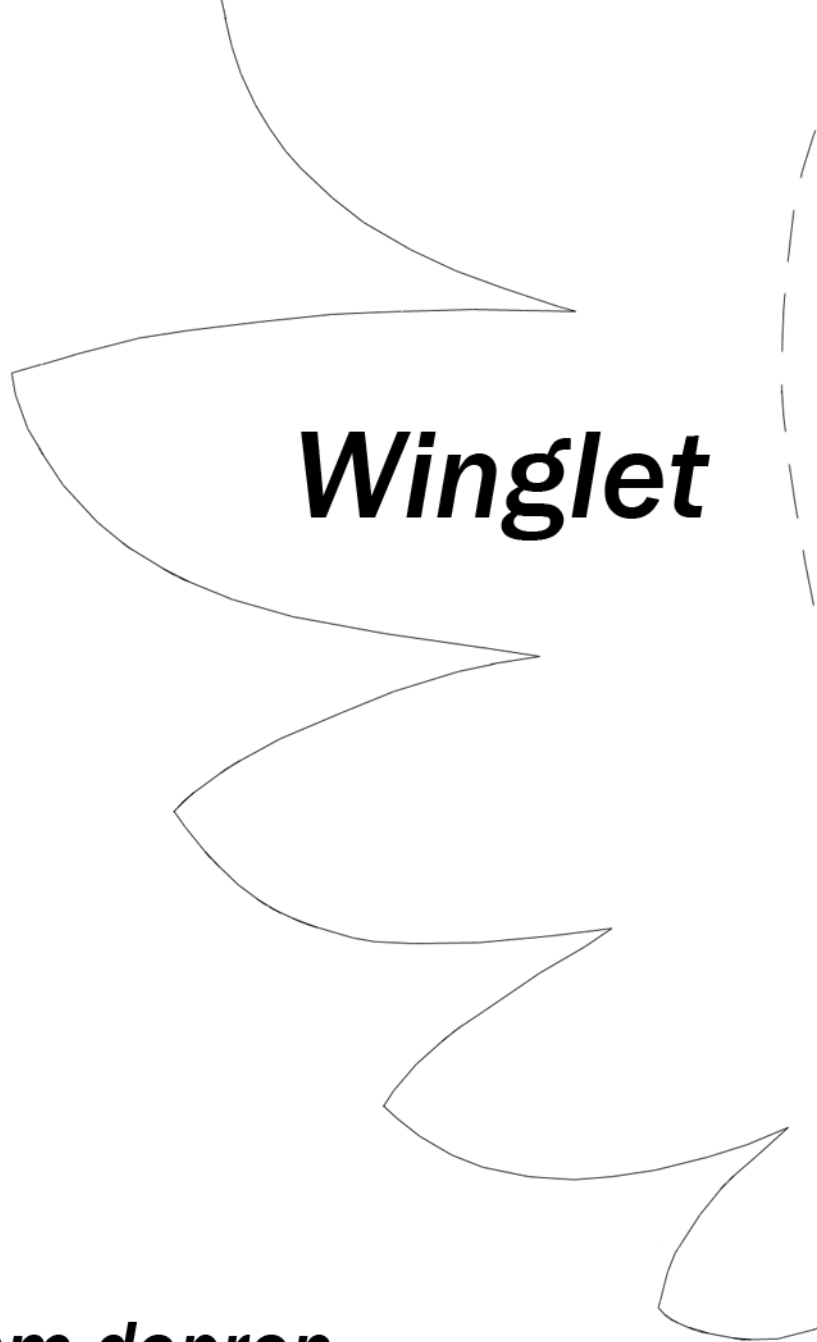
***Bottom
Fuselage***



Side panel



***Top hatch
Trim to fit***

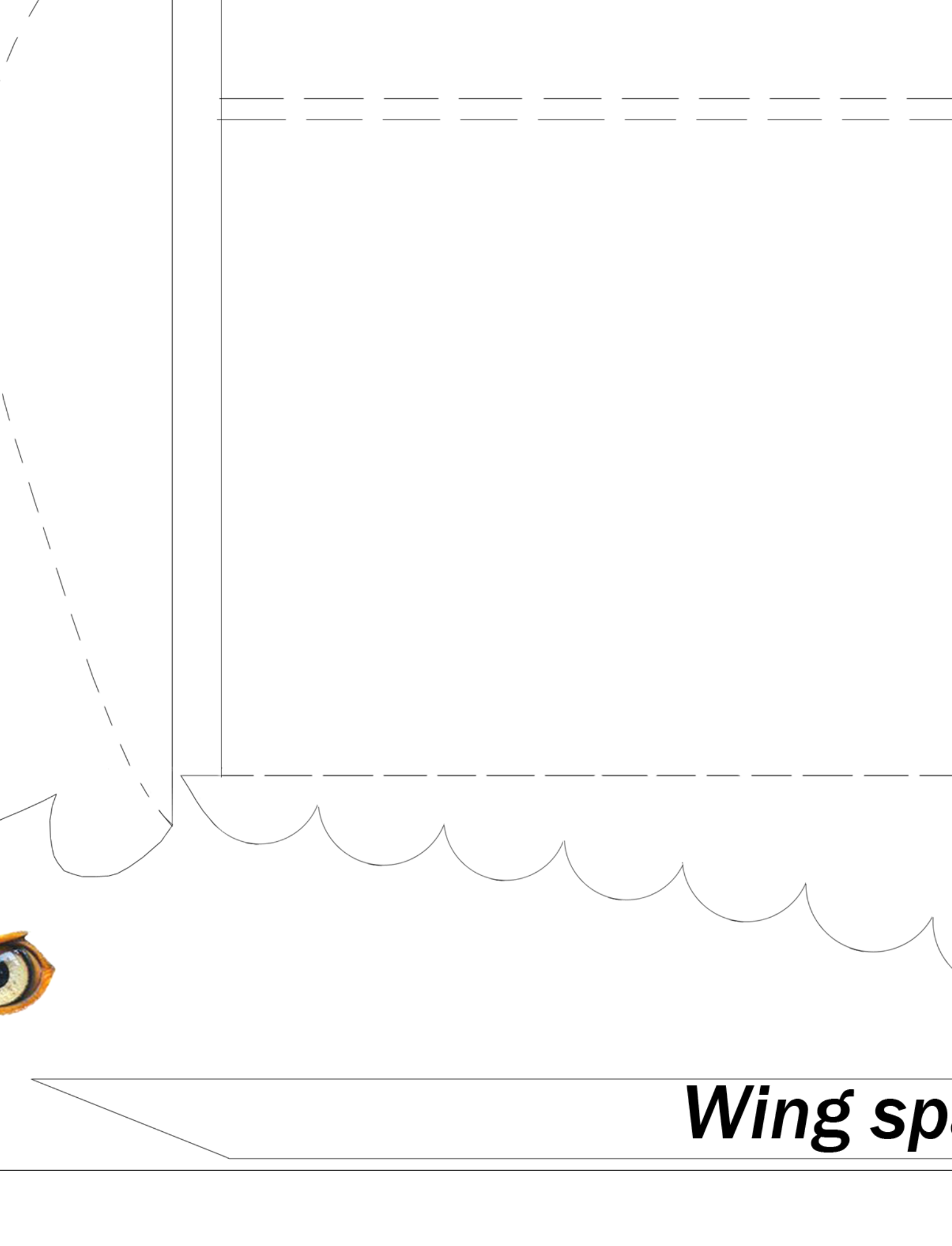


Winglet

***All parts are 3mm depron
except for the wing spar
and tail***

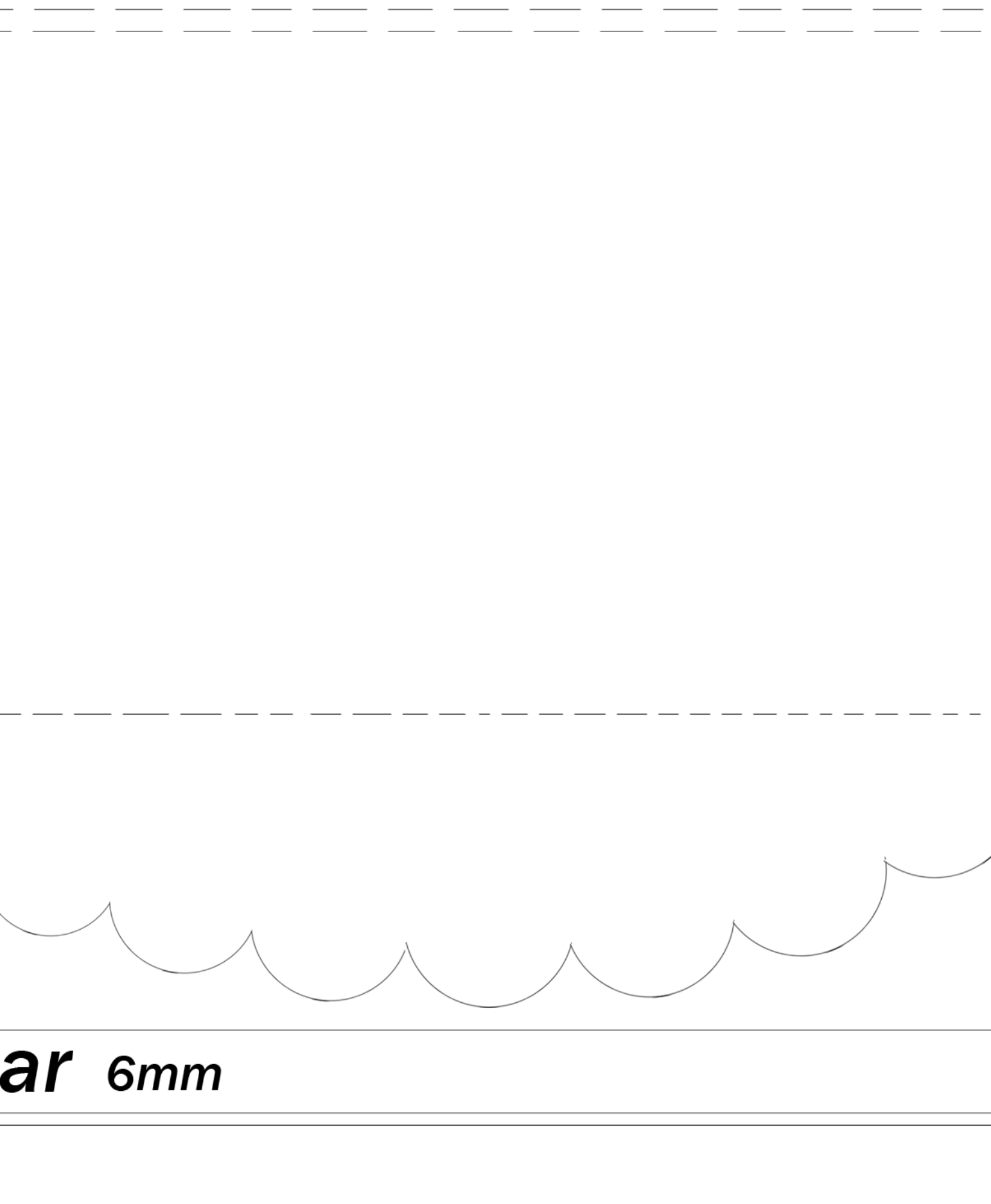
***CG is approx 3cm-4cm
from the leading edge of wing***





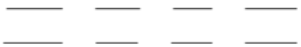
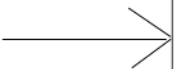
Wing sp

Wing spar goes here



ar 6mm

CG



Rear top fuselage