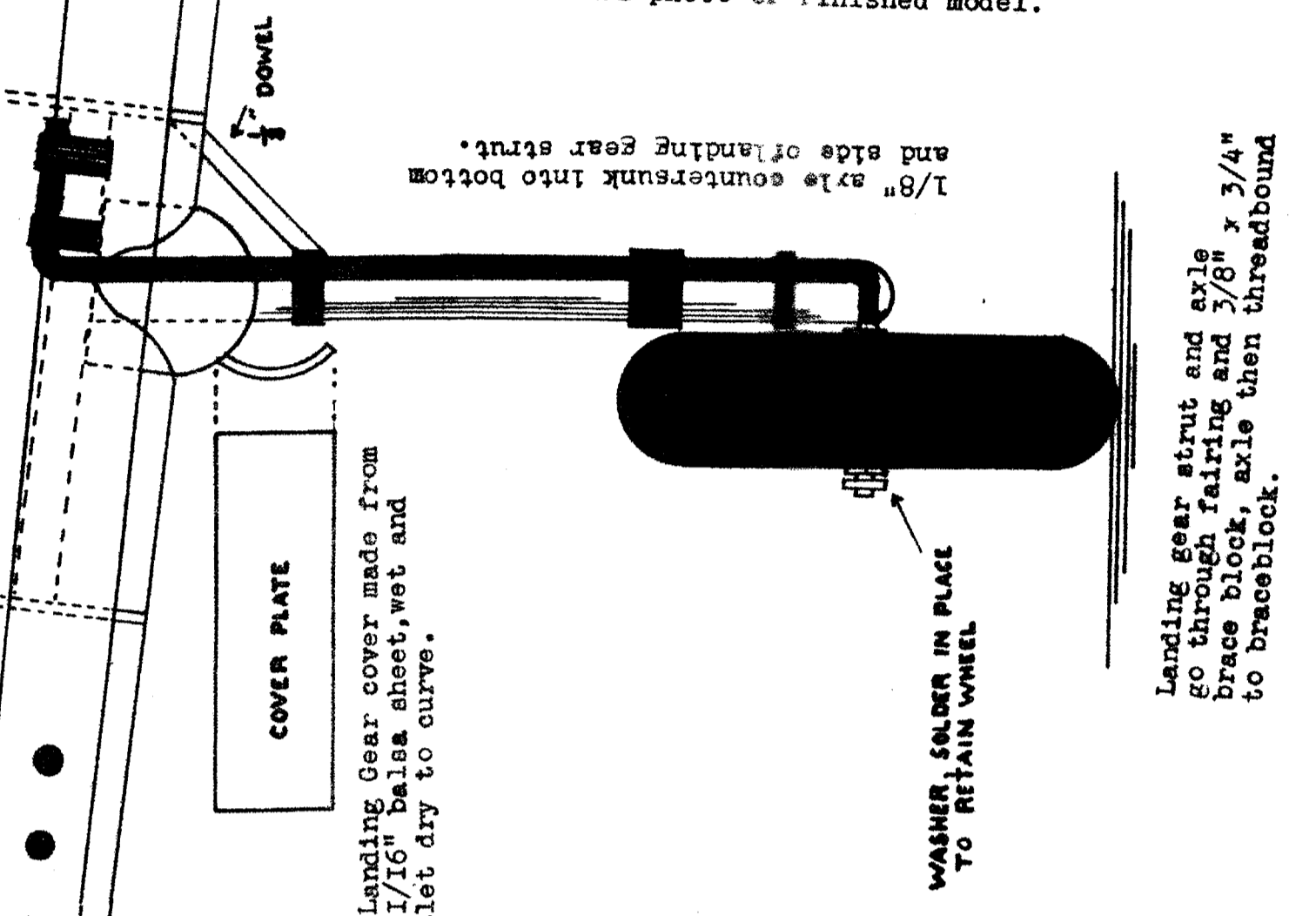
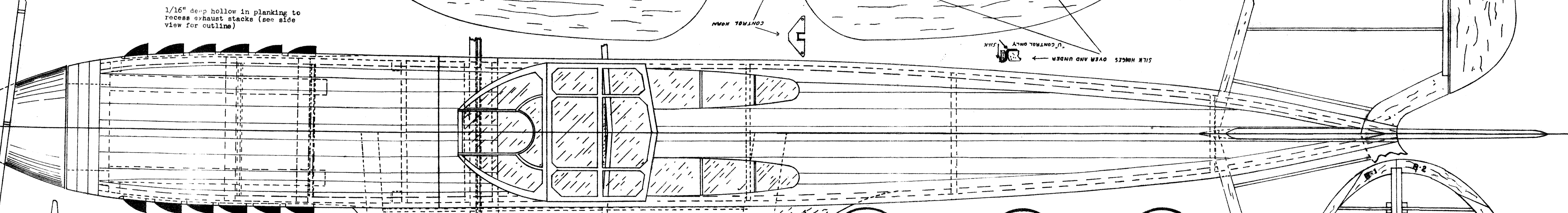


LEADING EDGE PATTERN MAKE 2 FROM 3/8" x 1/4"  
 FRONT SPAN PATTERN MAKE 2 FROM 1/2" x 3/4"  
 REAR SPAN PATTERN MAKE 2 FROM 1/2" x 3/4"



Actual photo of finished model.  
 1/8" axle counter sunk into bottom and side of landing gear struts.  
 Landing gear cover made from 1/16" balsa sheet, wet and set dry to curve.  
 WASHER ENKNER IN PLACE TO RETAIN WHEEL  
 Leaving gear strut and axle go thru fairing and 3/8" x 3/4" brace block and then threadbush to braceblock.



Framework of cockpit enclosure is simulated by painting acetate tape required color; strip to size with razor and straightedge. Apply as per plan to celluloid.

SLIDING HATCH DETAIL

Motor mounts: 3/8" x 3/4" basswood.  
 Motor brace 1/8" x 1 1/2" x 3" pine or plywood.

SLOT FOR TIMER ARM

SPINNER DETAIL

Spinner is made by carving inside of two parts of "B", (1/2" sht.) to fit prop, and cementing to bass back-plate. Mount this assembly (D) to motor, using regular nut & washer. Recess spinner (C) as shown to accommodate prop nut & washer. Cut a hole in bottom of recess and cement a second prop nut therein. To attach remainder of spinner merely screw to crankshaft.

A  
B  
C

Motor bearings and braces are located to suit motor used. Thrust line (crankshaft) should be centered on C.L.

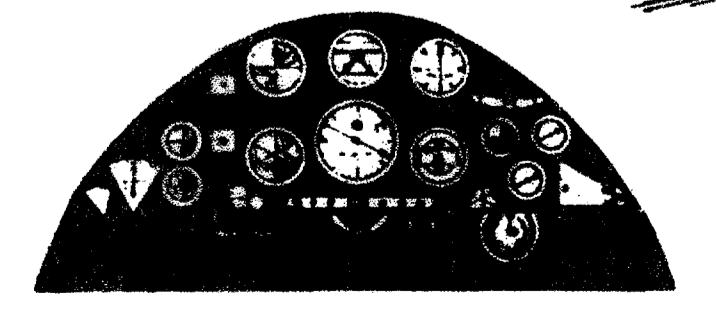
BOND PAPER FILLET PATTERN MAKE 2, TRIM TO FIT

INSTRUCTIONS FOR ASSEMBLY OF FUSELAGE

Start construction of the fuselage by selecting two 1/8" x 3/8" crutch. Mark former positions and cut to length. Glue the two crutch members in notches on each side of fuselage formers. Make sure that alignment is perfect. Check with top and side view. Start planking with the 1/8" x 3/8" soft planks by planing and gluing to formers. One plank on each side over crutch pieces. Then cement planks, one each, on top and bottom (see side view) work from the side planks up and down making sure to bevel plank edges to obtain good fit and from the bottom up and top down as shown in side view. Tail wheel should be installed before planking is completed. Note that planking butts completely planked, sand to a smooth finish and cover with the silkspan tissue covering. Cut top of fuselage free at nose along line above exhaust stacks as shown on side view to install motor mounts and wing etc. Note: Wing should be installed before constructing cockpit enclosure. Cut slot in planking and thru P-15 to accommodate stabilizer.

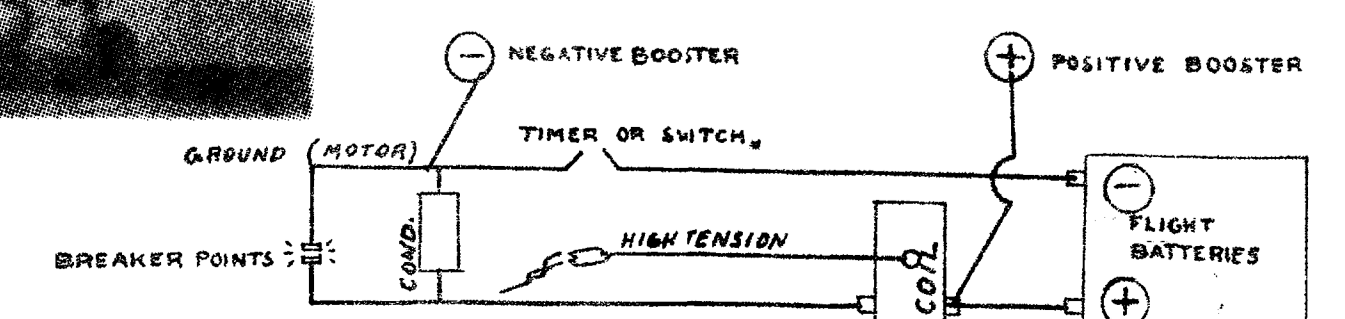


Tail-wheel is mounted on 1/8" wire, bent as shown. Wire passes thru banding in block, washers soldered to both sides to secure.

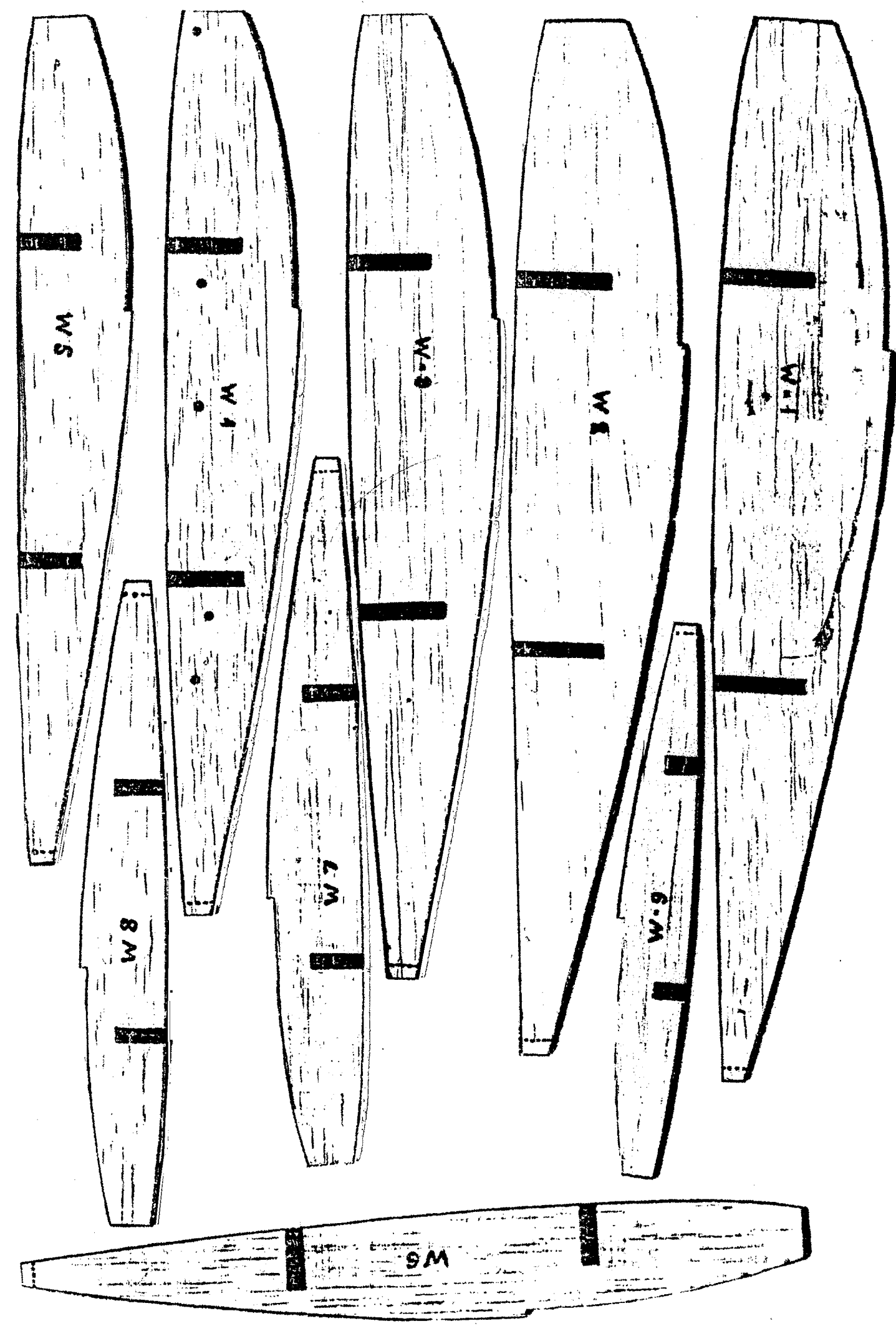
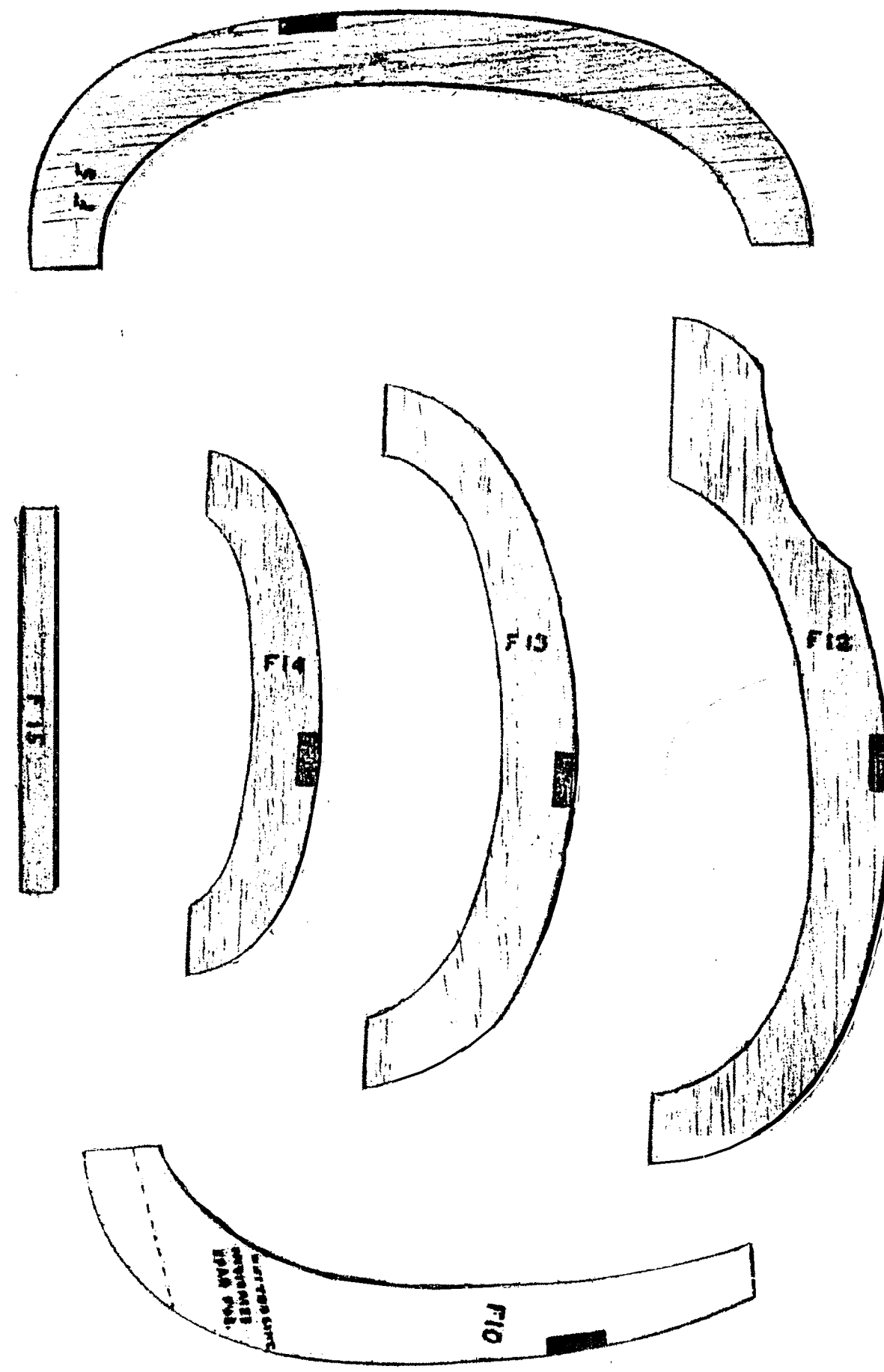
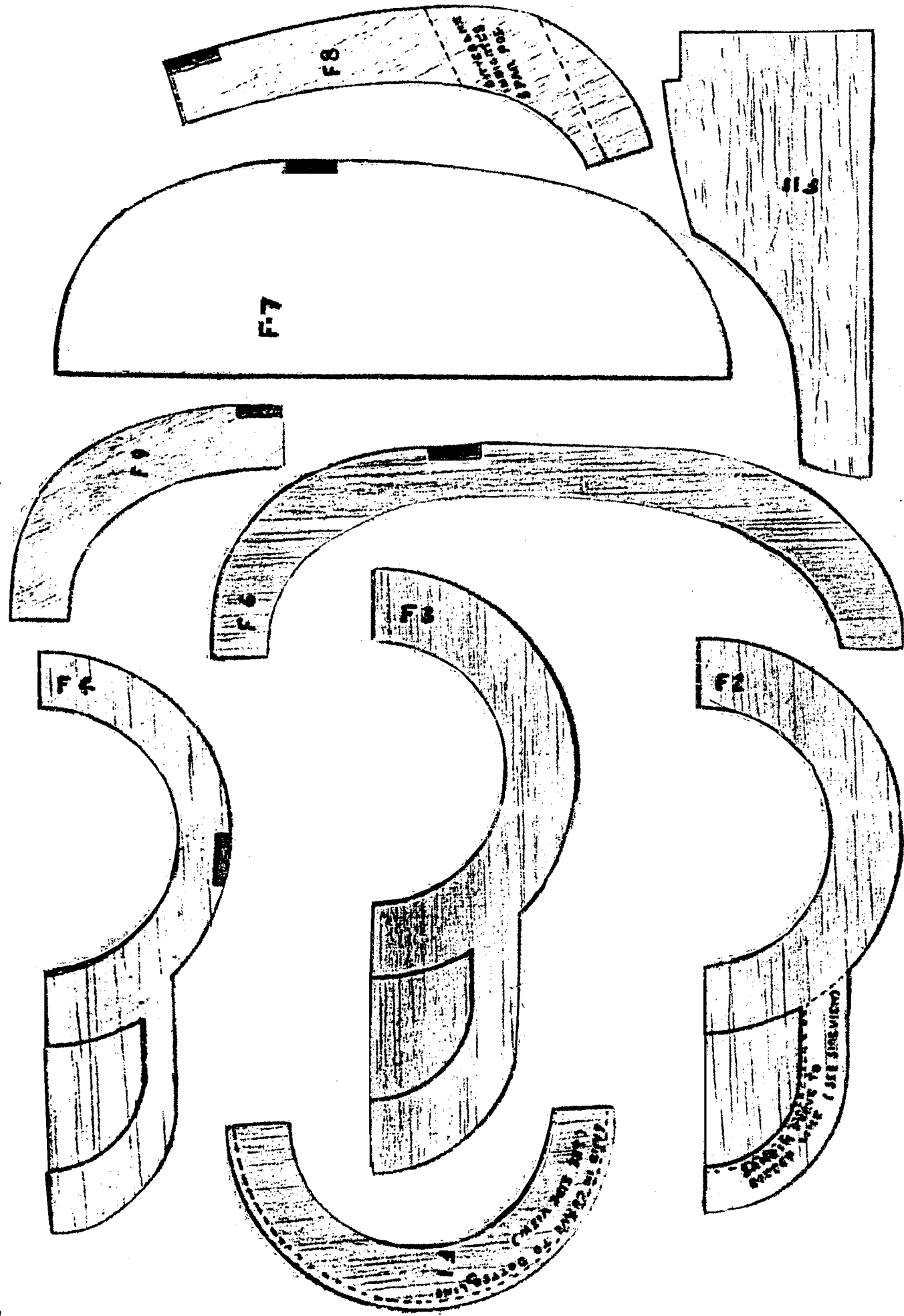
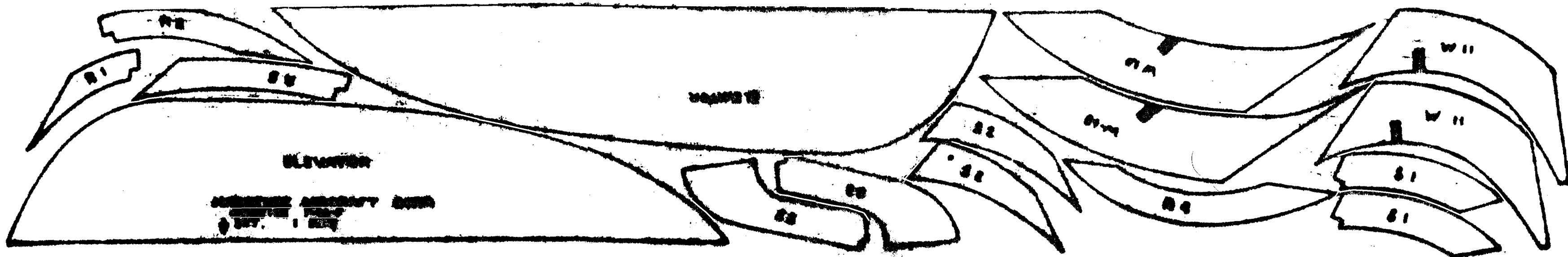


For U control or free flight use "B" or "C" class gas motor.

Model also excellent for perfect exhibition model or class work.



**WARHAWK**  
**CURTISS P-40-F**  
 SPAN 48 3/8" LENGTH 37 1/8"  
 FREE FLIGHT OR "U" CONTROL MODEL  
 MINIATURE AIRCRAFT CORP.  
 83 DANIEL LOW TERRACE NEW BRITTON NEW YORK



# WARHAWK

CURTISS P-40-F

SPAN - 48"      LENGTH - 37 1/2"

1/16" HOLES FOR CONTROL SURF.

MINIATURE AIRCRAFT CORP.

100 WASHINGTON STREET, NEW YORK, N.Y.