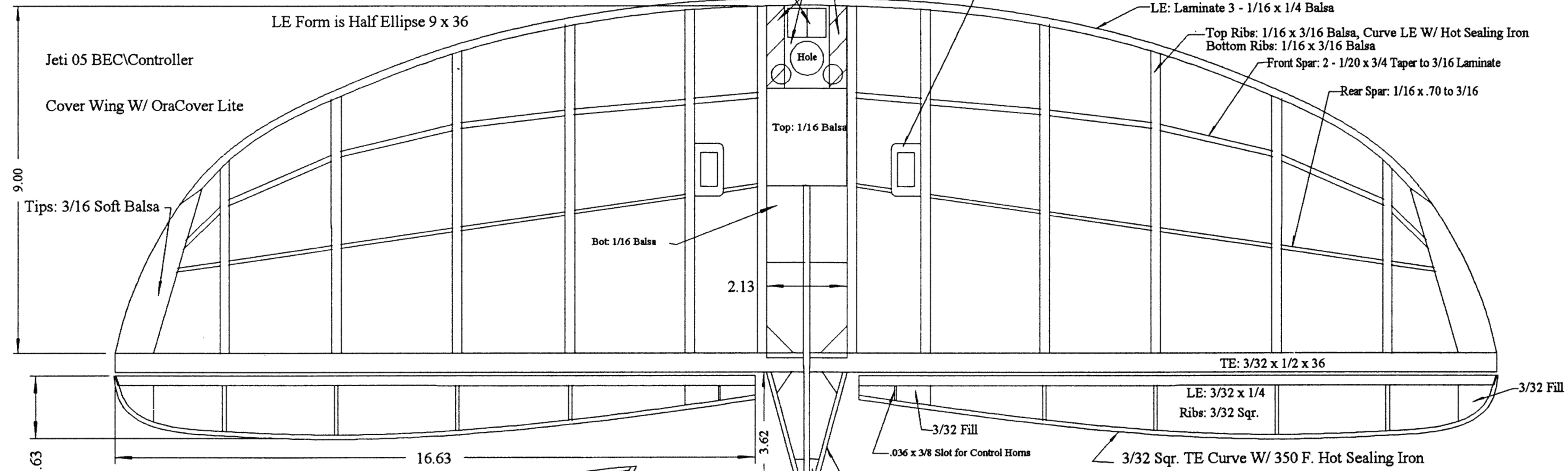


3-800 LiMn Tadiran Cells & Charger from Ralph Weaver (www.magtechinc.net)  
 Magellan Technologies, Inc. 10783 Northhampton Drive, Fishers, Ind. 46038

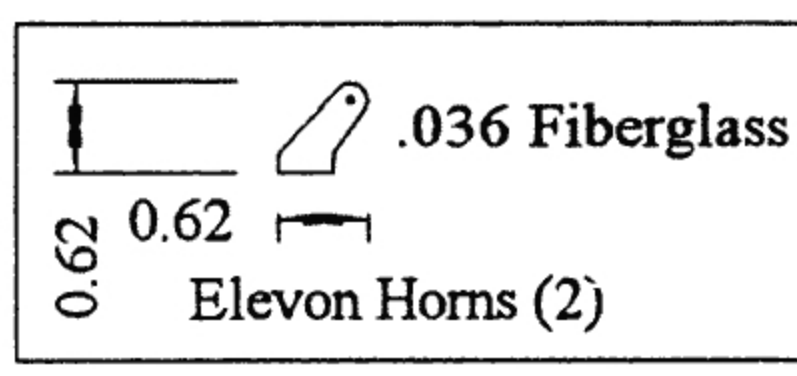
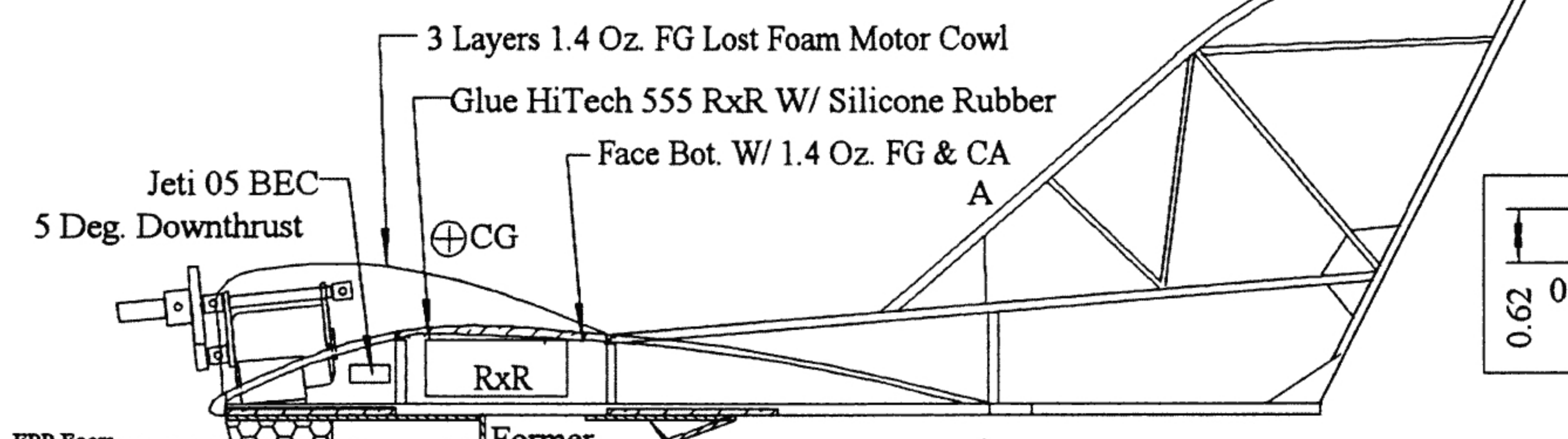
Titanic Airlines 280 Motor, 3:1 Geared, & Prop (6.8 D. x 6.3 in. P) (www.modelairtec.com)  
 Modelair-Tech, P.O. Box 1467, Lake Grove, NY 11755-0898 (516)-981-0372

2 -.50 x .75 45 Deg. Wedges  
 Radius to Fit Motor W/ 5 Deg. Downthrust  
 Glue in Motor W/ Silicone Rubber

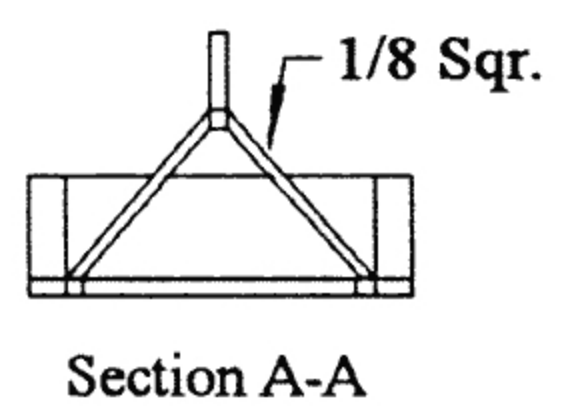
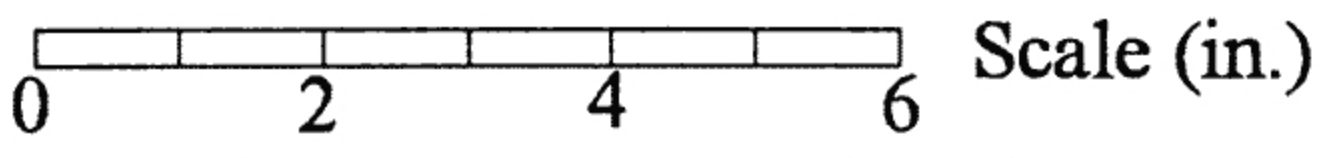
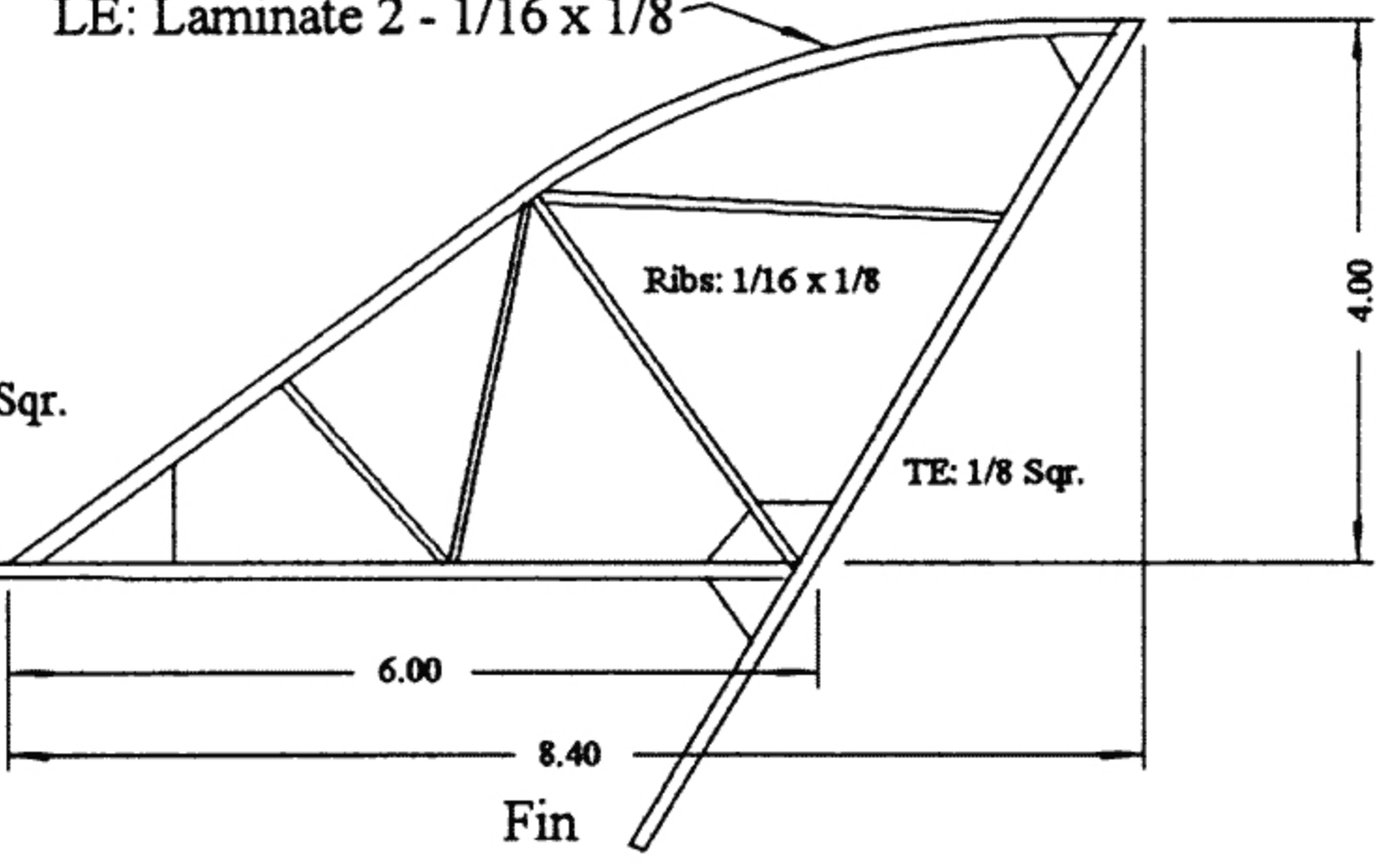
Antenna: Inside wing along main spar & back along TE between rib strips.



Hinge elevons on Top (3/32 Gap) W/ 1/2 Mylar Tape



Build & Finish Fin Frame  
 Cover Fin  
 Assemble to Wing  
 Trim B. Long. & TE to Length During Assembly



Use 3-800 LiMn Tadiran Cells (2.0 oz.)  
 8.0 Oz. Gross Wt. W/ Batteries  
 315 in.2, 3.66 Oz./Ft.2  
 Use HiTech Flash4 Computer Radio for Elevon Mixing  
 30+ Min. Flight Times are Possible  
 Very Stable  
 Good for lots of Loops & Inverted Flight  
 Very Easy to Land, Just Float it in

# Wing Ding (After a Tom Hunt Design)

Lester W. Garber Ph.D. 7 Jan. 2000  
 2324 East 5th Street, Duluth, MN 55812

lgarber@bresnanlink.net

## CENTER SECTION