

2

2

Chape

S7012

S7012

S7012

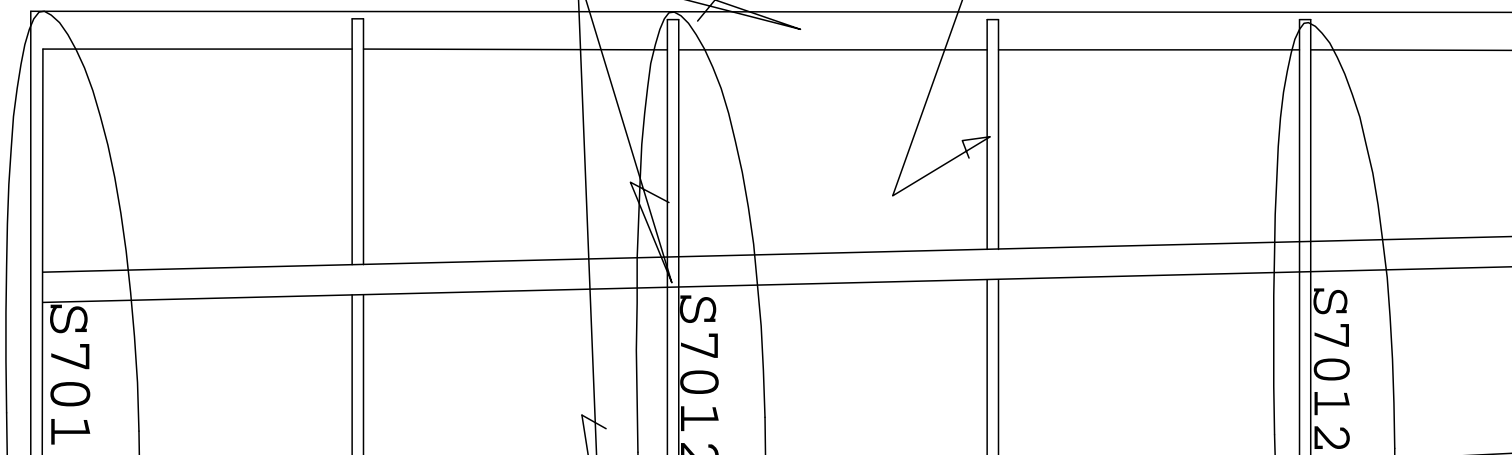
Balsa 5x5

Fausse Nervure 15/1

S701

S7012

S7012



eau de Nervure 15/10

Bord de Fuite 200/20 mm

Coffrage Balsa 10/10

S7012

Coffrage Balsa 15/10 Longeron

S7012

67 mm

Vis de Fixation 3 ou 4 mm

S7012

Têton de Centrag

Bois Taraudé ou Boulon prisonnier

CTP 20/10

Bloc de Fixation

Treuil à 18 mm C.G

0

Nervure Balsa 15/10

S7012

S7012

Chapeau de Nervure 15/10

Chapeau de Ne

Balsa 3x5

Balsa 3x2

Balsa 3x20

Balsa 30/10 Pro

re

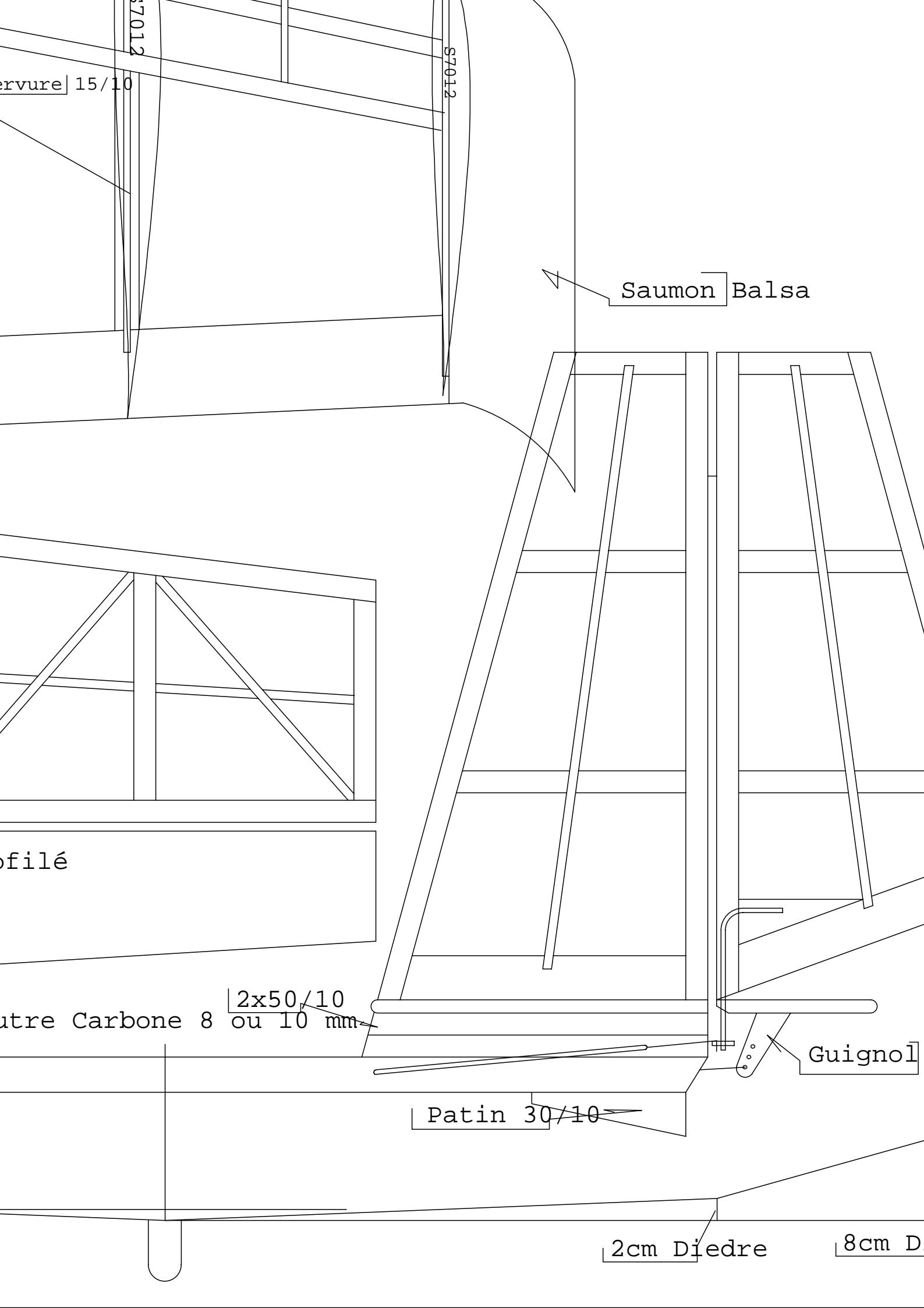
Pou

RG 15

S7012

S7012

S7012



ervure 15/10

S7012

S7012

Saumon Balsa

profilé

2x50/10
autre Carbone 8 ou 10 mm

Patin 30/10

Guignol

2cm Dïedre

8cm D

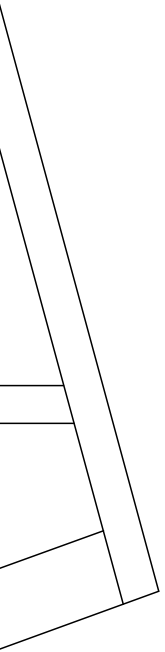
5

RG 15

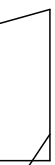
RG 15

FOX

Lancé Main M.A.
By Paul COHEN



Epoxy



fibredre

Y
C.C