

Phoenix-2000 (OpenTX for FrSky Taranis)

printed on: 11/27/14 10:02 AM

General Model Settings

Name: Phoenix-2000
 EEprom Size: 836
 Timer1: 00:00, L7
 Timer2: 00:00, L8, Persistent
 Protocol: FrSky XJT - D16
 Pulse Polarity: Negative
 Throttle Trim: Disabled
 Trim Increment: Fine
 Center Beep:

Flight modes

Flight mode name	Fades		Trims				Gvars									Switch
	IN	OUT	Rud	Ele	Thr	Ail	GV1 Ail bu	GV2 Fla bu	GV3 Quadfl	GV4 Snapfl	GV5	GV6	GV7	GV8 Tmr1	GV9 Tmr2	
FM0 Cruise	0	0	FM0	FM0	FM0	FM0	75	120	50	40	0	0	0	0	0	----
FM1 Acro	0	0	FM0	FM0	FM0	FM0	FM0	FM0	FM0	FM0	FM0	FM0	FM0	FM0	FM0	SE↑
FM2 Landing	0	0	FM0	FM0	FM0	FM0	FM0	FM0	FM0	FM0	FM0	FM0	FM0	FM0	FM0	SE↓
FM3	0	0	FM0	FM0	FM0	FM0	0	0	0	0	0	0	0	0	0	----
FM4	0	0	FM0	FM0	FM0	FM0	0	0	0	0	0	0	0	0	0	----
FM5	0	0	FM0	FM0	FM0	FM0	0	0	0	0	0	0	0	0	0	----
FM6	0	0	FM0	FM0	FM0	FM0	0	0	0	0	0	0	0	0	0	----
FM7	0	0	FM0	FM0	FM0	FM0	0	0	0	0	0	0	0	0	0	----
FM8	0	0	FM0	FM0	FM0	FM0	0	0	0	0	0	0	0	0	0	----

Inputs

[I1]Ail Weight(+100%) Source(Ail)
 [I2]Ele Weight(+100%) Source(Ele)
 [I3]Thr Weight(+100%) Source(LS) NoTrim
 [I4]Rud Weight(+100%) Source(Rud)
 [I5]Fla Weight(+100%) Source(RS)

Mixers

CH1 (r ail) [I1]Ail Weight(+100%) (Ailerons)
 Thr Weight(-GV1) Flight mode(Landing) Curve(1)

```

(Airbrake)
CH2  (ele)      [I2]Ele Weight(+100%) (Elevator)
CH3  (thr)      [I3]Thr Weight(+100%) (Throttle)
CH4  (rud)      [I4]Rud Weight(+100%) (Rudder)
CH5  (l ail)    [I1]Ail Weight(+100%) (Ailerons)
        Thr Weight(GV1) Flight mode(Landing) Curve(1)
(Airbrake)
CH6  (r fla)    [I5]Fla Weight(-100%) Offset(50%) Curve(3) (Flaps)
        Thr Weight(-GV2) Flight mode(Landing) Curve(1)
(Airbrake)
        Ail Weight(-GV3) Flight mode(Acro) (Quadflap)
        Ele Weight(-GV4) Flight mode(Acro) Curve(2)
(Snapflap)
CH7  (l fla)    [I5]Fla Weight(-100%) Offset(50%) Curve(3) (Flaps)
        Thr Weight(-GV2) Flight mode(Landing) Curve(1)
(Airbrake)
        Ail Weight(GV3) Flight mode(Acro) (Quadflap)
        Ele Weight(-GV4) Flight mode(Acro) Curve(2)
(Snapflap)

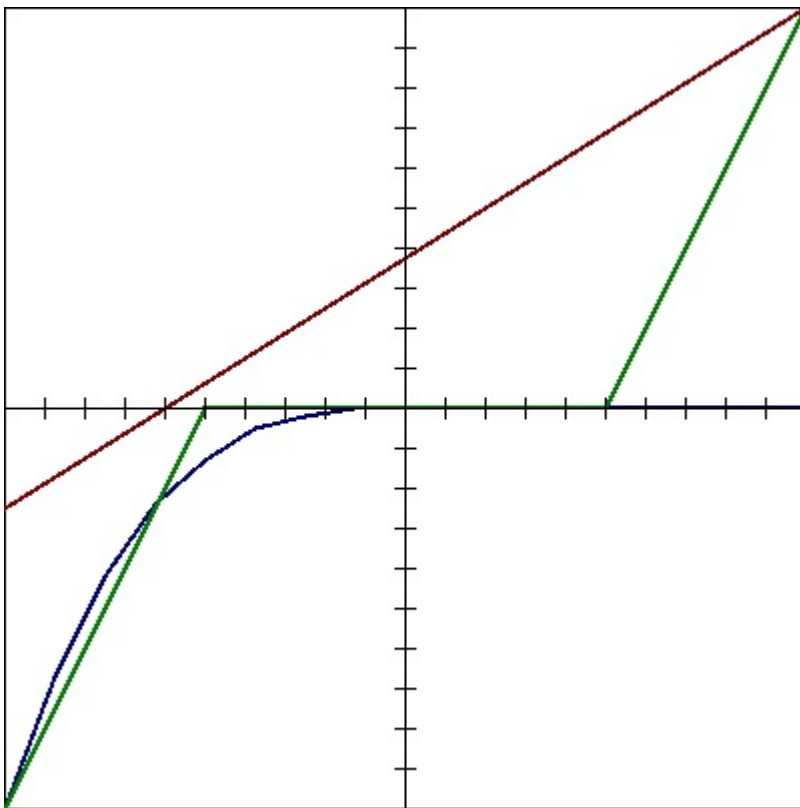
```

Limits

	CH 01	CH 02	CH 03	CH 04	CH 05	CH 06	CH 07	CH 08	CH 09	CH 10	CH 11	CH 12	CH 13	CH 14	CH 15	CH 16
Name	r ail	ele	thr	rud	l ail	r fla	l fla									
Offset	0.0	22.6	0.0	0.0	0.0	-12.9	-6.3	0.0	0.0	0.0	0.0	0.0	0.0	0.0	0.0	0.0
Min	-100	-100	-100	-80	-100	-100	-100	-100	-100	-100	-100	-100	-100	-100	-100	-100
Max	100	100	100	80	100	100	100	100	100	100	100	100	100	100	100	100
Invert	NOR	INV	NOR	NOR	NOR	NOR	NOR	NOR	NOR	NOR	NOR	NOR	NOR	NOR	NOR	NOR

	CH 17	CH 18	CH 19	CH 20	CH 21	CH 22	CH 23	CH 24	CH 25	CH 26	CH 27	CH 28	CH 29	CH 30	CH 31	CH 32
Name																
Offset	0.0	0.0	0.0	0.0	0.0	0.0	0.0	0.0	0.0	0.0	0.0	0.0	0.0	0.0	0.0	0.0
Min	-100	-100	-100	-100	-100	-100	-100	-100	-100	-100	-100	-100	-100	-100	-100	-100
Max	100	100	100	100	100	100	100	100	100	100	100	100	100	100	100	100
Invert	NOR	NOR	NOR	NOR	NOR	NOR	NOR	NOR	NOR	NOR	NOR	NOR	NOR	NOR	NOR	NOR

Curves



Curve 1	Curve 2
Curve 3	Curve 4
Curve 5	Curve 6
Curve 7	Curve 8
Curve 9	Curve 10
Curve 11	Curve 12
Curve 13	Curve 14
Curve 15	Curve 16
Curve 17	Curve 18
Curve 19	Curve 20
Curve 21	Curve 22
Curve 23	Curve 24
Curve 25	Curve 26
Curve 27	Curve 28
Curve 29	Curve 30
Curve 31	Curve 32

	pt 1	pt 2	pt 3	pt 4	pt 5	pt 6	pt 7	pt 8	pt 9	pt 10	pt 11	pt 12	pt 13	pt 14	pt 15	pt 16	pt 17
Curve 1	Y	-100	-67	-42	-24	-13	-5	-2	0	0	0	0	0	0	0	0	0

Curve 2	Y	-100	0	0	0	100														
Curve 3	Y	-25	100																	
Curve 4	Y	0	0	0	0	0														
Curve 5	Y	0	0	0	0	0														
Curve 6	Y	0	0	0	0	0														
Curve 7	Y	0	0	0	0	0														
Curve 8	Y	0	0	0	0	0														
Curve 9	Y	0	0	0	0	0														
Curve 10	Y	0	0	0	0	0														
Curve 11	Y	0	0	0	0	0														
Curve 12	Y	0	0	0	0	0														
Curve 13	Y	0	0	0	0	0														
Curve 14	Y	0	0	0	0	0														
Curve 15	Y	0	0	0	0	0														
Curve 16	Y	0	0	0	0	0														
Curve 17	Y	0	0	0	0	0														
Curve 18	Y	0	0	0	0	0														
Curve 19	Y	0	0	0	0	0														
Curve 20	Y	0	0	0	0	0														
Curve 21	Y	0	0	0	0	0														
Curve 22	Y	0	0	0	0	0														
Curve 23	Y	0	0	0	0	0														
Curve 24	Y	0	0	0	0	0														
Curve 25	Y	0	0	0	0	0														
Curve 26	Y	0	0	0	0	0														
Curve 27	Y	0	0	0	0	0														
Curve 28	Y	0	0	0	0	0														
Curve 29	Y	0	0	0	0	0														
Curve 30	Y	0	0	0	0	0														
Curve 31	Y	0	0	0	0	0														
Curve 32	Y	0	0	0	0	0														

Logical Switches	
L1	SG↓ AND SH↓
L2	SG- AND SH↓
L3	SG↑ AND SH↓
L4	Cell < 3.7

L5	GV8 > 1
L6	GV9 > 1
L7	GV8 missing1
L8	GV9 missing1

Special Functions

#	Switch	Function	Parameter	Repeat	Enabled
SF1	ON	Volume	S1		---
SF2	SB↑	Backlight			---
SF3	ISA↑	Override CH3	-100		ON
SF4	L1	Play Value	Cell		---
SF5	L1	Play Value	Batt		---
SF6	L2	Play Value	Alt		---
SF7	L2	Play Value	VSpd		---
SF8	L3	Play Value	Speed		---
SF9	L3	Play Value	Dist		---
SF10	SD↑	Start Logs			---
SF11	ThrTrim Up	Adjust GV8	Incr: +1		ON
SF12	ThrTrim Down	Adjust GV9	Incr: +1		ON
SF13	L5	Adjust GV8	Value 0		ON
SF14	L6	Adjust GV9	Value 0		ON
SF15	L4	Play Track	lowbat	10	---
SF16	L1	Play Value	RSSI Rx		---
SF17	SB↓	Vario			---