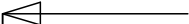


A

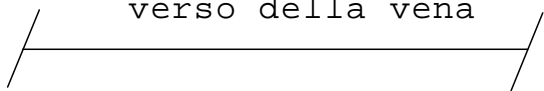


1

rinforzare ala nel ventre con rowing di ca



verso della vena



Incollare le due

A





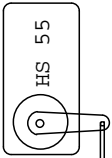


P2 depron mm3

2

carbonio resinato

longherone a tutta altezza al



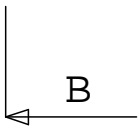
depron mm6

semi-ali in fusoliera



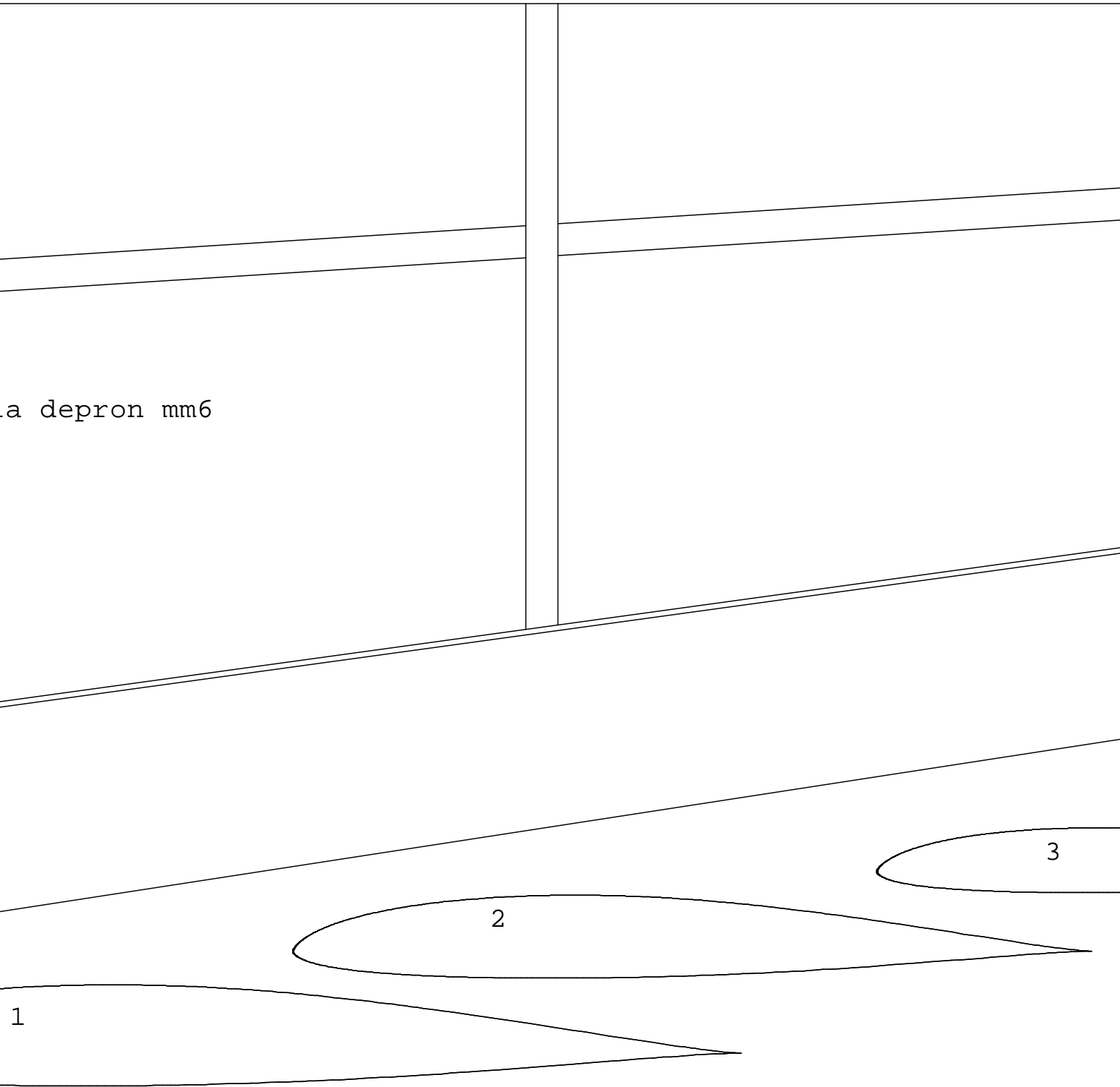


rivestire di fibra di vetro resinata



3

a depron mm6

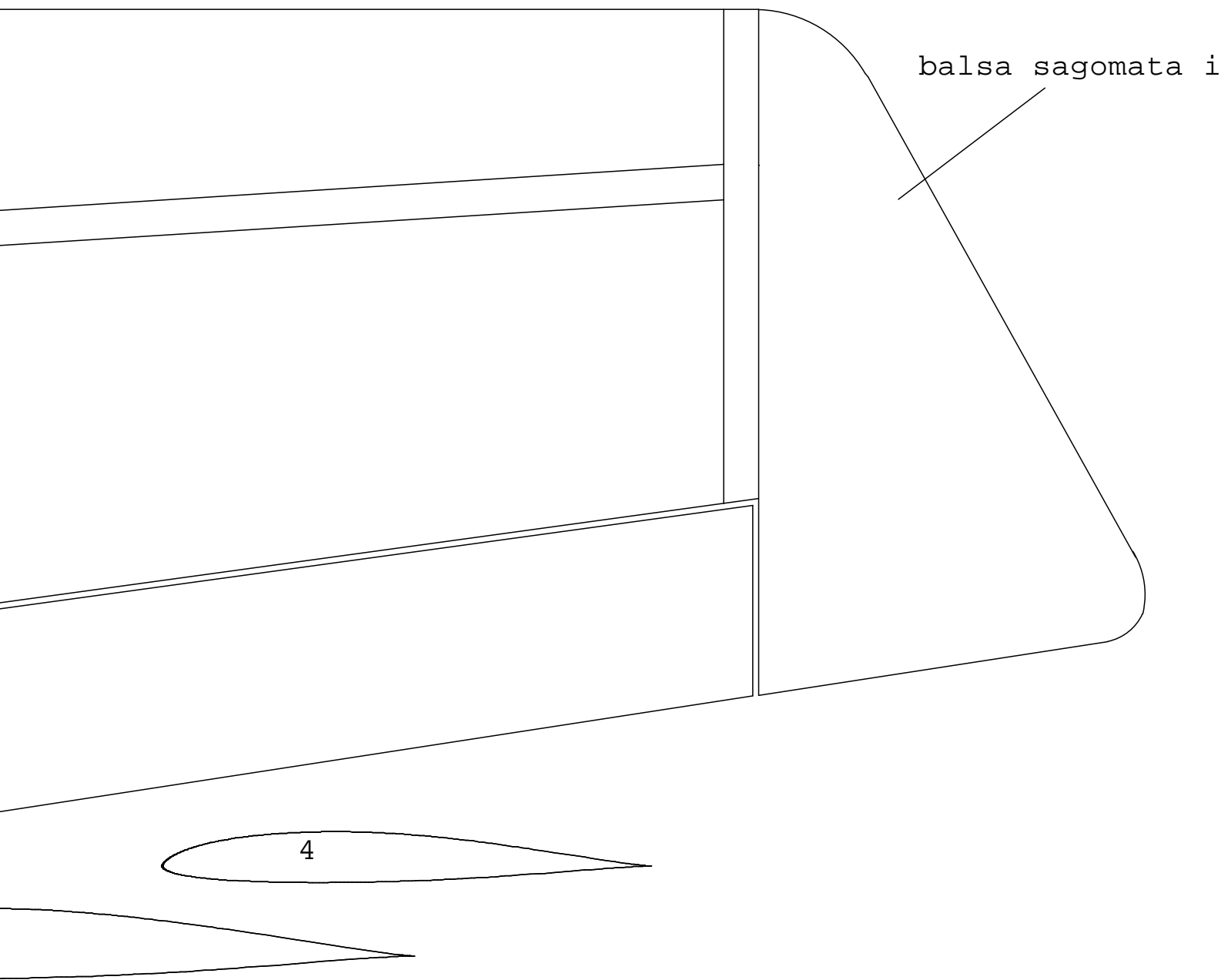








4



centine depron mm6





n opera































